



25 Bramble Way, Burscough
£825 Per Calendar Month

Bramble Way

Upper floor apartment located on the popular development Heathfields. The apartment comprises of hall, two double bedrooms with one having an en suite, bathroom and open plan kitchen living. The apartment also benefits with having a garage and allocated parking. AVAILABLE NOW.

Council Tax band: B

Key Features:

- Upper Floor Apartment
- Two Double Bedrooms
- Open Plan Kitchen Lounge
- Bathroom and En suite
- Juliette Balcony
- Single Garage
- Communal Garden
- Available NOW



Entrance hall

Front door to hall. Doors to laundry cupboard, doors to two bedrooms, bathroom and lounge.

Lounge

11' 9" x 15' 8" (3.59m x 4.77m)

Window to side. French doors to Juliette balcony. Open plan to kitchen.

Kitchen

11' 9" x 6' 6" (3.59m x 1.98m)

A good range of eye and low level units incorporating a 1 and a half stainless steel sink and drainer unit. Built in electric hob with canopy style extractor hood built over, built in electric oven and integrated fridge freezer. Partly tiled walls, window to rear and breakfast bar.

Bedroom One

10' 2" x 9' 9" (3.11m x 2.96m)

Two double wardrobes. Door to En-suite. Window to rear.

En suite

Three piece suite comprising of a cubicle shower, pedestal wash hand basin and low level WC.

Bedroom Two

7' 11" x 12' 0" (2.41m x 3.65m)

Window to rear. Built in wardrobe.

Bathroom

7' 6" x 6' 6" (2.28m x 1.97m)

Three piece suite comprising panelled bath, vanity unit wash hand basin and low level WC. Window to front.

Garage

Single garage with up and over door. Electrics.



COMMUNAL GARDEN

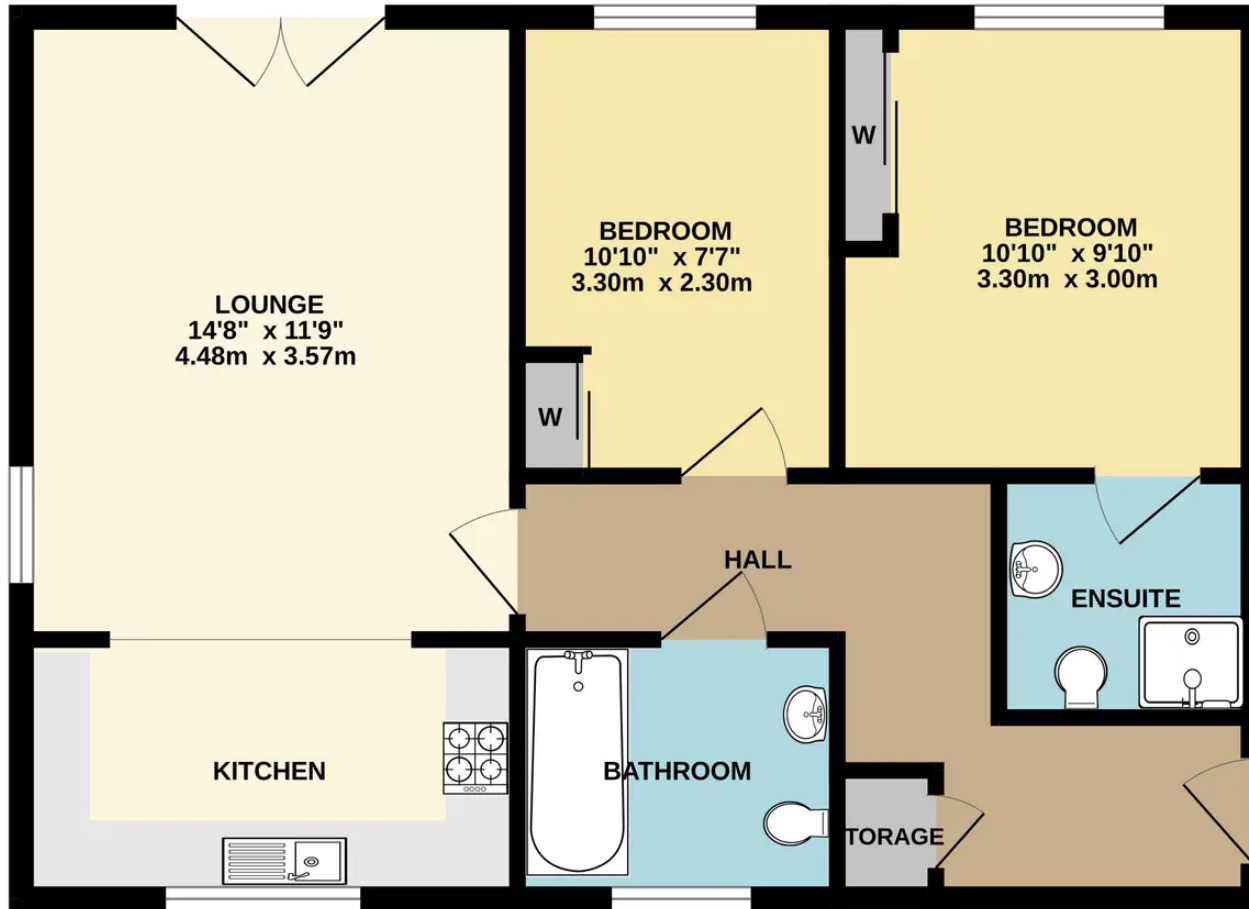
Rear garden with lawn and pathway - communal.

ALLOCATED PARKING

1 Parking Space



GROUND FLOOR



Whilst every attempt has been made to ensure the accuracy of the floorplan contained here, measurements of doors, windows, rooms and any other items are approximate and no responsibility is taken for any error, omission or mis-statement. This plan is for illustrative purposes only and should be used as such by any prospective purchaser. The services, systems and appliances shown have not been tested and no guarantee as to their operability or efficiency can be given.
Made with Metropix ©2024



Victoria Estates & Property Management

49a Liverpool Road North, Burscough - L40 0SA

01704 897647 • victoria@vepm.co.uk • <http://vepm.co.uk>

