



28 Orrell Lane, Burscough
£850 Per Calendar Month

Orrell Lane, Burscough

Extended semi detached house comprising porch, lounge, kitchen dining, WC, two double bedrooms and bathroom. The property benefits from small rear yard and local amenities within walking distance. Available immediately.

If the Landlord is willing to accept pets, then the monthly rent will be an additional £50pcm. Victoria Estates politely ask you to contact the office before viewing internally or externally.

Council Tax band: B

Key Features:

- Semi Detached House
- Two Double Bedrooms
- Open Plan Kitchen Dining
- Recently Decorated
- Close To Local Amenities
- Additional £50pcm if pets are accepted by Landlord
- AVAILABLE NOW



Entrance Hall

Front door to porch then door to lounge.

Lounge

22' 9" x 8' 0" (6.94m x 2.45m)

Window to front, stairs to first floor and door to dining kitchen.

Kitchen Dining

23' 5" x 11' 3" (7.13m x 3.44m)

An excellent range of eye and low level units incorporating single bowl stainless steel sink unit, built in electric oven, hob and overhead extractor hood, plumbed for washing machine. Three windows to side and both door and window to rear. Laminate flooring. Door to WC.

Cloakroom

Two piece suite comprising wash hand basin and low level WC. Window to side.

Landing

Doors to both bedrooms and bathroom. Window to side.

Bedroom One

16' 11" x 11' 5" (5.16m x 3.49m)

Window to front and side.

Bedroom Two

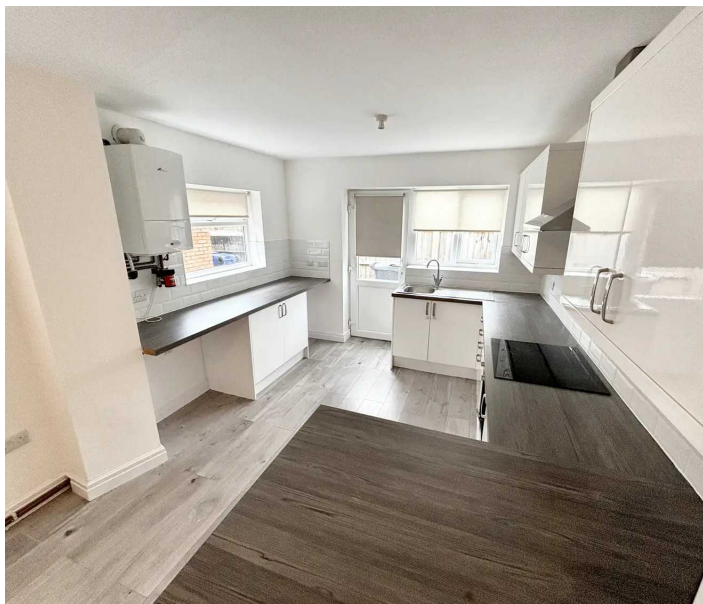
12' 6" x 11' 10" (3.80m x 3.60m)

Window to rear. Loft access.

Bathroom

5' 9" x 6' 2" (1.74m x 1.87m)

Three piece suite comprising panelled bath with Triton shower over and shower screen, pedestal wash hand basin and low level WC. Tiled flooring.



FRONT GARDEN

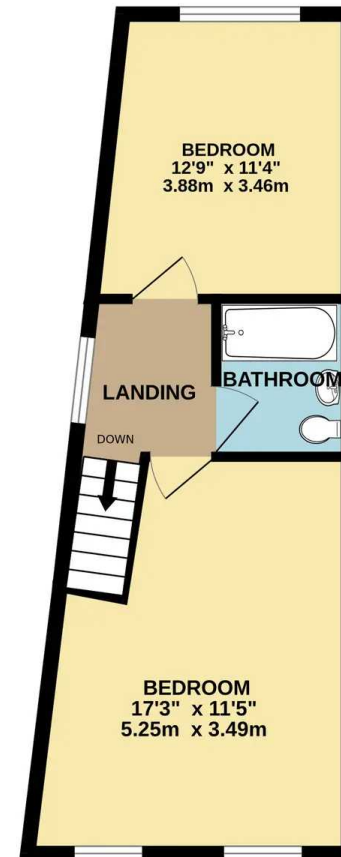
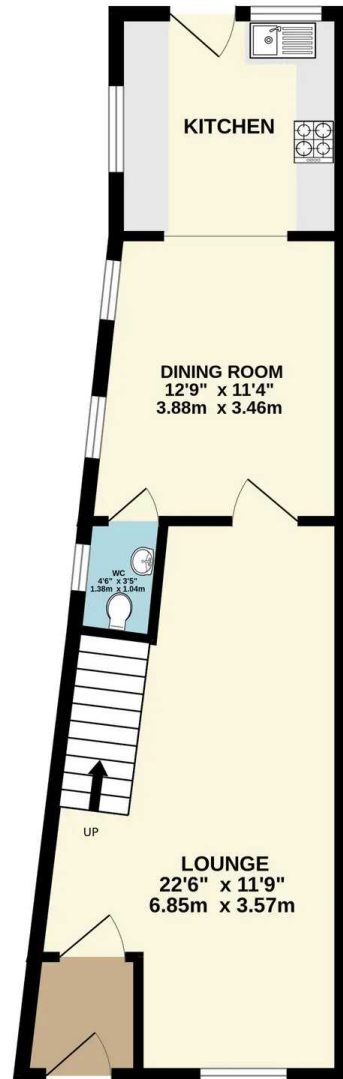
Tarmac front with parking for one car.

REAR GARDEN

Enclosed rear yard, block paved and gate to side.









Victoria Estates & Property Management

49a Liverpool Road North, Burscough - L40 0SA

01704 897647 • victoria@vepm.co.uk • <http://vepm.co.uk>



VICTORIA ESTATES
&
PROPERTY MANAGEMENT