



34 Trevor Road, Burscough
£140,000

Trevor Road

Ideal for anyone wanting a project, this two bedroomed semi detached house is marketed with no onwards chain. The property comprises of hall, lounge, dining, kitchen, two double bedrooms and bathroom. The external of the property benefits from both front and rear gardens and outside WC.

Council Tax band: B

Tenure: Freehold

- ATTENTION INVESTORS AND FIRST TIME BUYERS!
- Semi Detached
- Two Double Bedrooms
- Two Reception Rooms
- Front & Rear Gardens
- IN NEED OF WORK
- Freehold
- NO ONWARDS CHAIN



Entrance Hall

Front door to hall, stairs to 1st floor and door into lounge.

Lounge

12' 11" x 11' 4" (3.93m x 3.45m)

Window to front and door into dining. Gas fire.

Dining Room

7' 5" x 11' 4" (2.25m x 3.46m)

Window and door to kitchen. Two storage cupboards, both with windows to side. Boiler in cupboard.

Kitchen

10' 3" x 7' 5" (3.13m x 2.27m)

A range of eye and low level units incorporating a stainless steel sink drainer unit. Plumbed for washing machine. Window to rear and side. Door leading to rear garden. Tiled flooring.

Landing

Doors leading to both bedrooms and bathroom. Window to side.

Bedroom One

14' 5" x 10' 11" (4.39m x 3.32m)

Two windows to front.

Bedroom Two

8' 8" x 9' 7" (2.63m x 2.92m)

Window to rear. Storage cupboard and loft access.

Bathroom

6' 8" x 5' 5" (2.04m x 1.64m)

Three piece suite comprising panelled bath with shower over, pedestal wash hand basin, low level WC and partly tiled walls. Window to side.



REAR GARDEN

Enclosed rear garden. Mainly lawn with patio, two sheds and outbuild with low level WC. Side gate leading to front garden.

FRONT GARDEN

Enclosed front garden. Gate to side leading to rear garden.

ON STREET

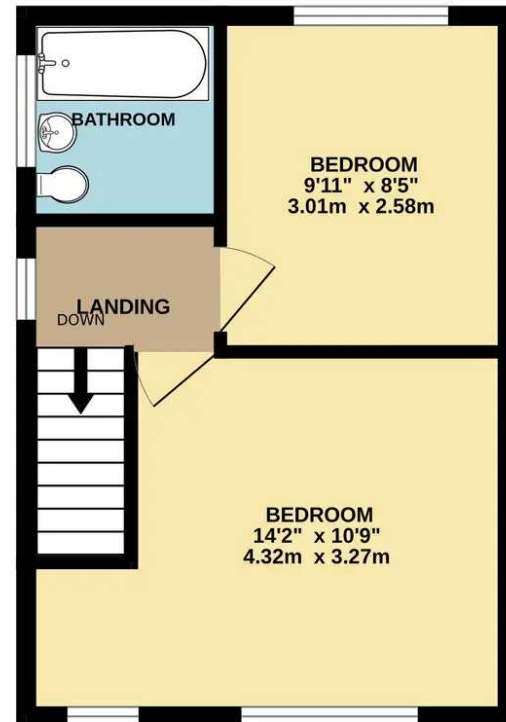
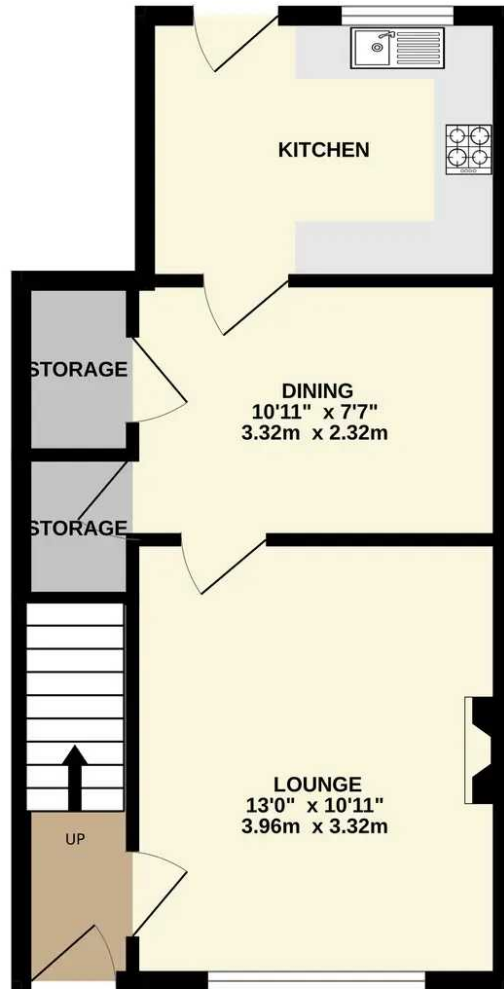
Parking to front of property.





GROUND FLOOR

1ST FLOOR





Victoria Estates & Property Management

49a Liverpool Road North, Burscough - L40 0SA

01704 897647 • victoria@vepm.co.uk • <http://vepm.co.uk>



VICTORIA ESTATES
&
PROPERTY MANAGEMENT