



**2 Jackson Close, Haskayne**  
**Offers in Region of £220,000**



## Jackson Close, Haskayne

Presenting this three bedroom semi detached house situated on a fabulous corner plot. Accommodation comprises of porch, hall, lounge, open plan kitchen dining, three bedrooms and bathroom over two floors. The property benefits from front, side and rear gardens, private driveway and detached garage. No Onwards Chain!

Council Tax band: C

Tenure: Freehold

### Key features:

- Semi Detached
- Corner Plot
- Open Plan Kitching Dining
- Three Bedrooms
- New Fitted Bathroom
- Front & Rear Gardens
- Detached Garage
- Private Driveway





### Entrance

Front door to porch then door to hallway. Stairs to 1st floor. Storage cupboard in hall.

### Lounge

10' 8" x 17' 4" (3.25m x 5.28m)

Bay window to front. Fireplace and laminate flooring. Understairs storage and door to dining kitchen.

### Kitchen Dining

14' 11" x 17' 11" (4.54m x 5.45m)

A good range of eye and low level units incorporating a sink and drainer unit. Plumbed in for washing machine and dishwasher. Spaces for fridge freezer and cooker. Tiled flooring. Two windows to the side and one to the rear. Door to side leading to side patio.

### Landing

Doors to three bedrooms and bathroom. Window to side. Loft access.

### Bedroom One

8' 8" x 14' 7" (2.63m x 4.45m)

Window to front. Built in/fitted wardrobes.

### Bedroom Two

10' 6" x 8' 7" (3.19m x 2.62m)

Window to rear.

### Bedroom Three

5' 9" x 10' 2" (1.75m x 3.11m)

Window to front. Over stairs storage cupboard.

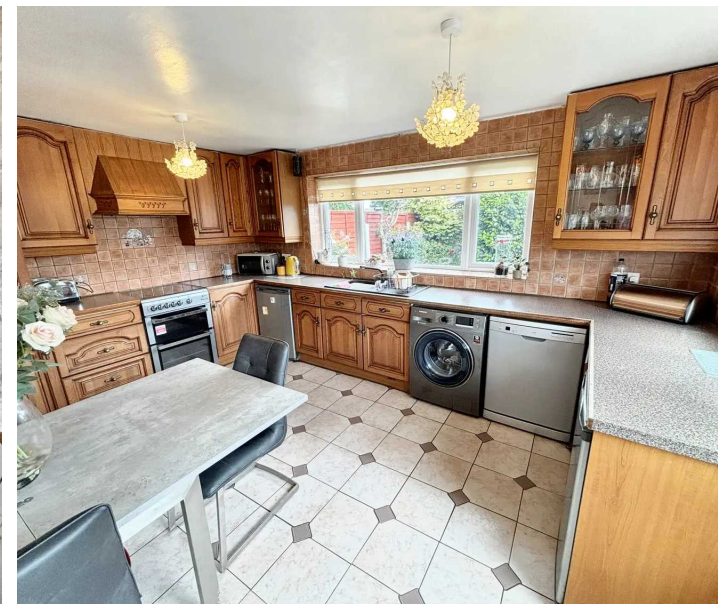
### Bathroom

5' 10" x 6' 4" (1.79m x 1.93m)

Three piece suit comprising corner shower cubicle, vanity wash hand basin and low level WC. Window to rear.

### Garage

Up and over door. Located to rear of property.





### FRONT GARDEN

Block paved driveway, lawn to front and side. Gates to side leading to rear patio.

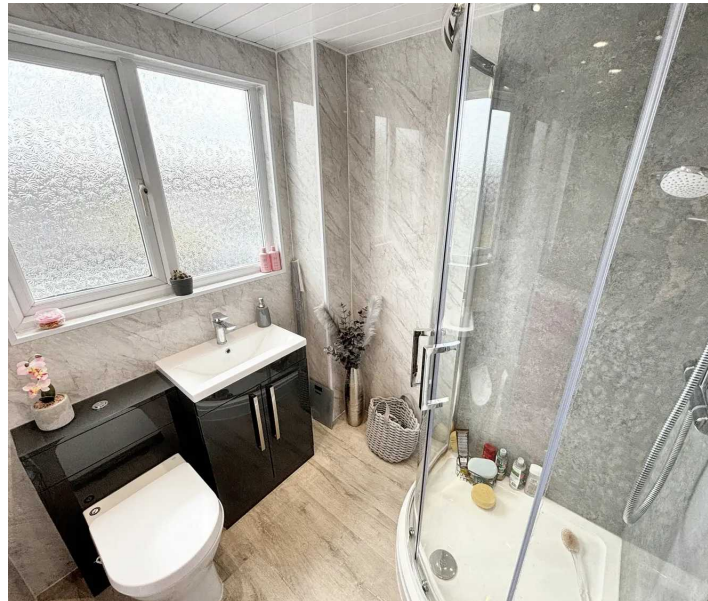
### REAR GARDEN

Lawn, planted out borders and side patio.

### DRIVEWAY

3 Parking Spaces

Two spaces on private driveway and space in front of garage.

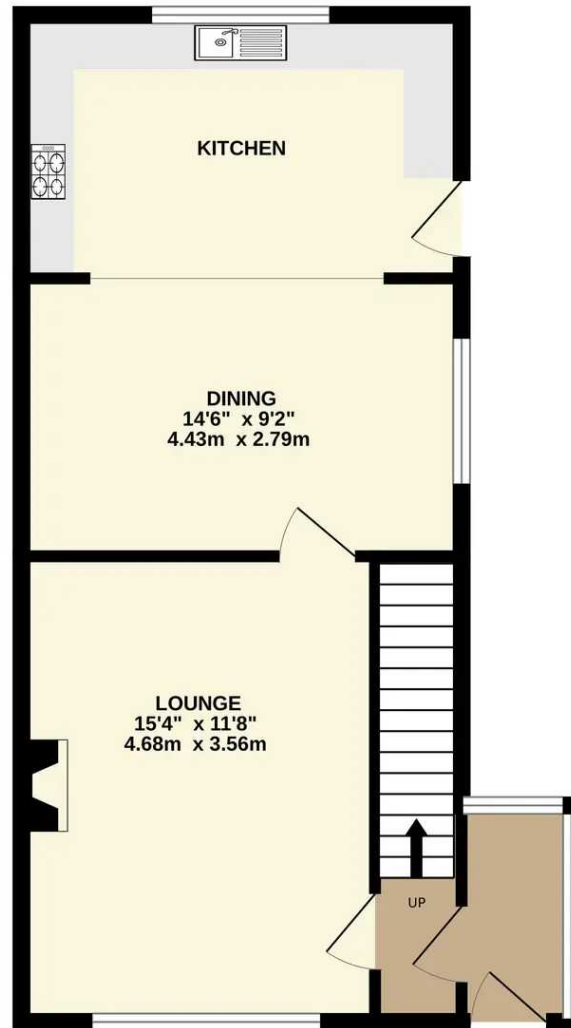




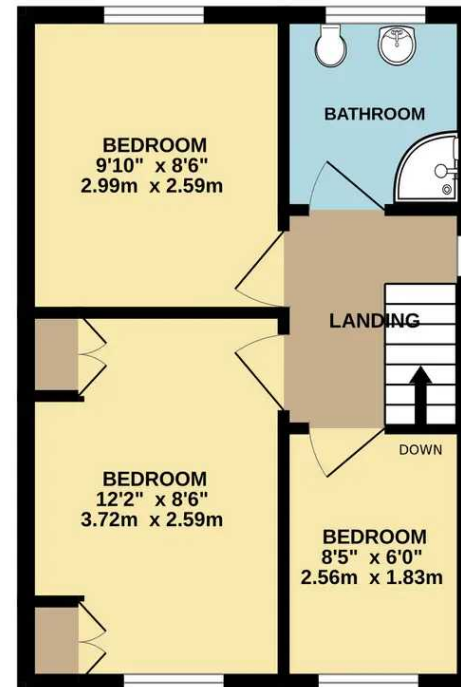




GROUND FLOOR



1ST FLOOR







## Victoria Estates & Property Management

49a Liverpool Road North, Burscough - L40 0SA

01704 897647 • victoria@vepm.co.uk • <http://vepm.co.uk>



VICTORIA ESTATES  
&  
PROPERTY MANAGEMENT