



Earls Gardens, Burscough

Prices From £305,000

Beautiful two-bedroom bungalows.

At the back of the property is the open plan living room providing the perfect living space. The living room benefits from large patio doors that open out onto the garden. The fitted kitchen comes complete with integrated fridge freezer, ceramic hob, extractor fan and waist height oven. We've also included a washer-dryer in a separate utility cupboard.

The master bedrooms benefits from a walk-in dressing area or En-suite. The second bedroom could be used as an ideal space for guests or quiet study room, the choice is yours.

The shower room is complete with a level access shower, a chrome towel radiator and a fitted mirror along with the toilet and sink with vanity cupboard.

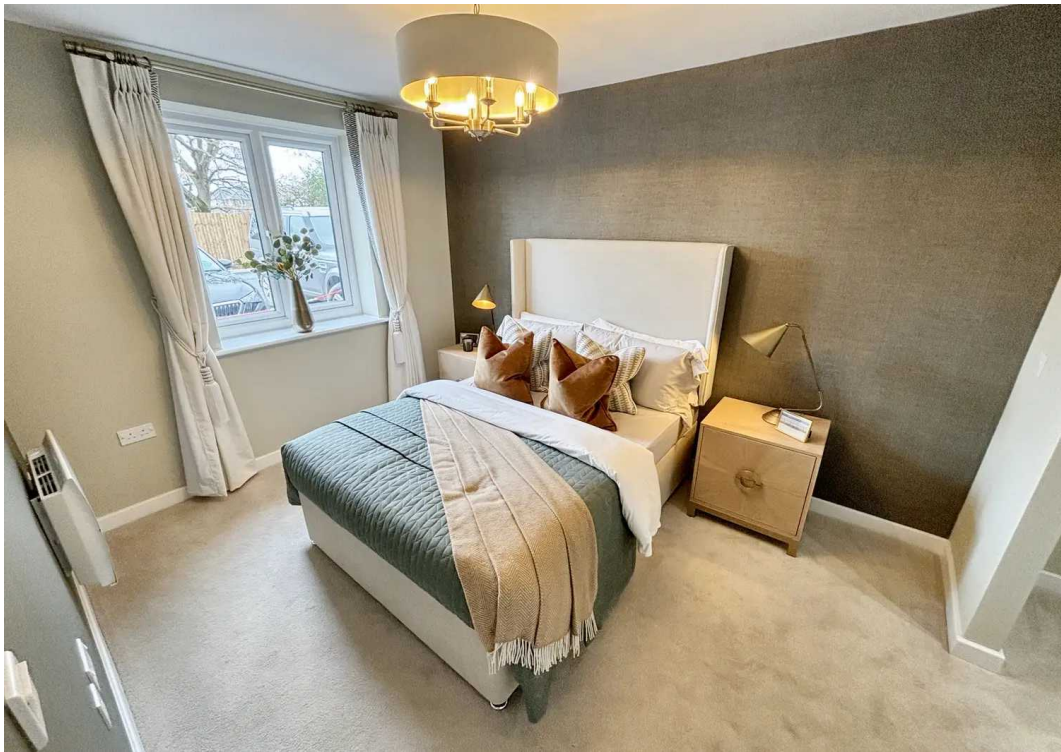
The bungalows comes complete with fitted flooring throughout and for safety they all come with fitted alarms.

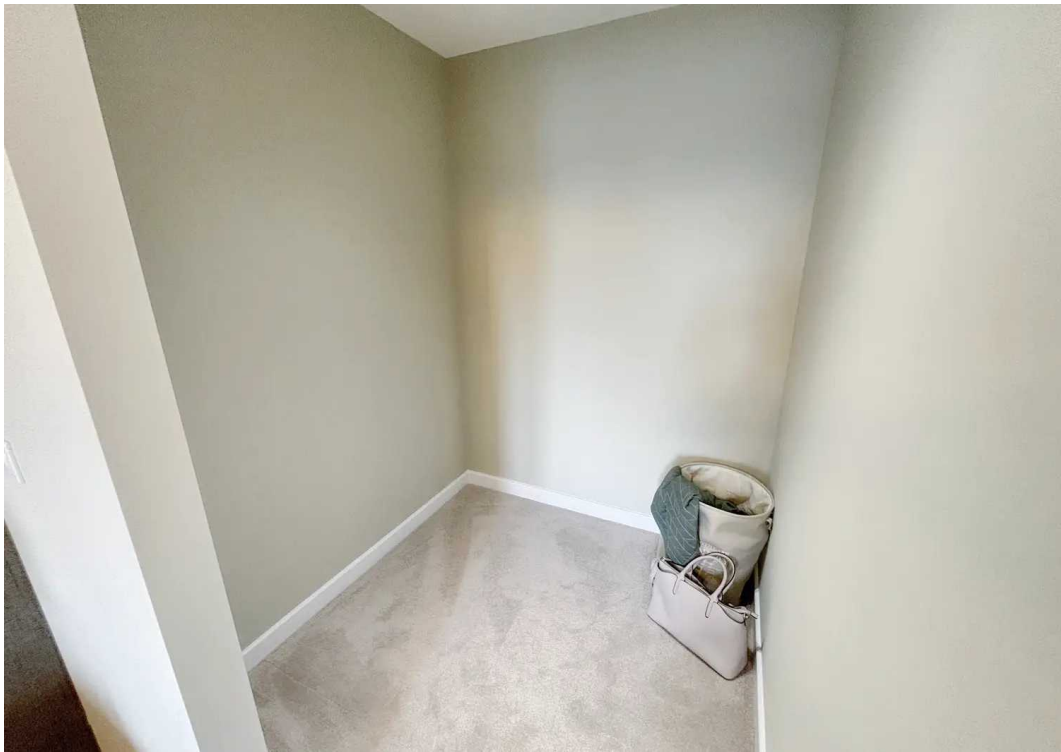
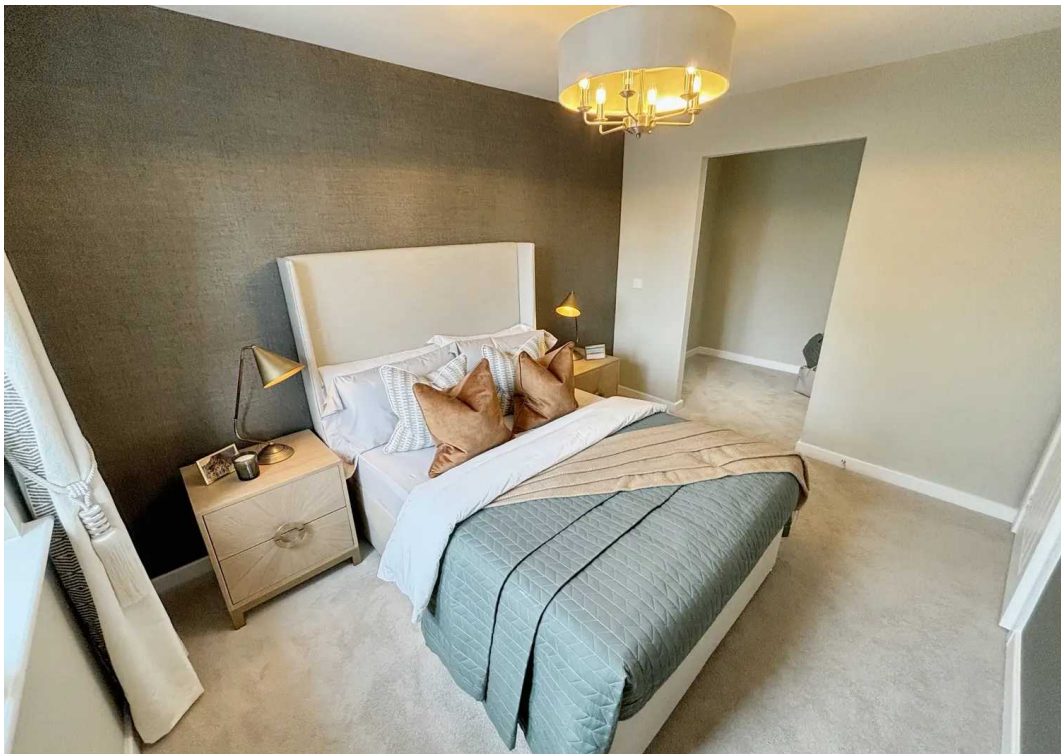
The private garden is turfed with a flagged area that leads to a garden shed. There are 2 parking spaces and each bungalow benefits from solar panels.

All bungalows get full use/access to the communal lounges and also use of the guest suite in the apartments for if you have any guests visiting you.

Don't miss out, call today to find out more.







11
669 SQFT
62.15 SQM



Living (Max)	13' 8" x 12' 1"	4179mm x 3683mm
Kitchen (Max)	12' 1" x 8' 7"	3683mm x 2647mm
Dining (Max)	8' 7" x 9' 5"	2644mm x 2891mm
Bedroom One (Max)	11' 9" x 9' 1"	3623mm x 2758mm
Bedroom Two (Max)	10' 3" x 8' 2"	3121mm x 2494mm
Shower (Max)	7' 2" x 6' 5"	2197mm x 1982mm

22
824 SQFT
76.63 SQM



Living (Max)	12' 8" x 12' 7"	3873mm x 3864mm
Kitchen (Max)	12' 8" x 12' 7"	3873mm x 3864mm
Bedroom One (Max)	12' 8" x 12' 7"	3873mm x 3864mm
En-Suite (Max)	7' 2" x 6' 5"	2197mm x 1982mm
Bedroom Two (Max)	11' 6" x 8' 8"	3512mm x 2670mm
Shower (Max)	7' 3" x 5' 2"	2209mm x 1575mm



Victoria Estates & Property Management

49a Liverpool Road North, Burscough - L40 0SA

01704 897647 • victoria@vepm.co.uk • <http://vepm.co.uk>

