



Apt 29, Ainscough Mill, Mill Lane
£185,000

Apartment 29 Ainscough Mill, Mill Lane

Located on the third floor this modern apartment is now available for sale. This spacious apartment benefits from two double bedrooms, bathroom, En-suite and an open plan lounge dining which is bursting with light. With allocated parking for two cars, communal gardens and just a walks away from local amenities this apartment is perfect.

Council Tax band: B

Tenure: Leasehold

Key Features

- 3rd Floor Apartment
- Open Plan Lounge-Kitchen
- Two Double Bedrooms
- En-suite & Bathroom
- 2 Allocated Parking Spaces
- Modern Throughout
- Walking Distance To Village
- Spacious & Bright



Entrance Hall

Front door into hallway with doors to both bedrooms and bathroom and door to lounge/kitchen. Storage cupboard.

Lounge

16' 0" x 11' 11" (4.89m x 3.63m)

Open plan into kitchen. Two windows to the front and one to the side.

Kitchen

9' 8" x 9' 8" (2.95m x 2.95m)

An excellent range of eye and low level units incorporating a 1 1/2 bowl stainless steel sink drainer unit, electric hob with extractor over and electric oven. Integrated fridge/freezer and washing machine. Window to the side. Laminate flooring.

Bedroom One

10' 6" x 14' 1" (3.20m x 4.30m)

Window to front. Door to En-suite.

En-suite

4' 11" x 5' 4" (1.50m x 1.63m)

Three piece suite comprising double shower cubicle, pedestal wash hand basin and low level WC. Partly tiles walls.

Bedroom Two

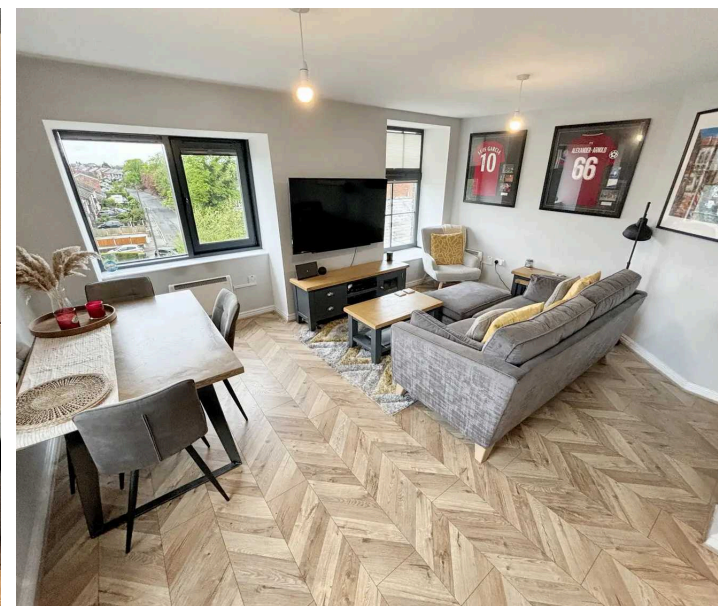
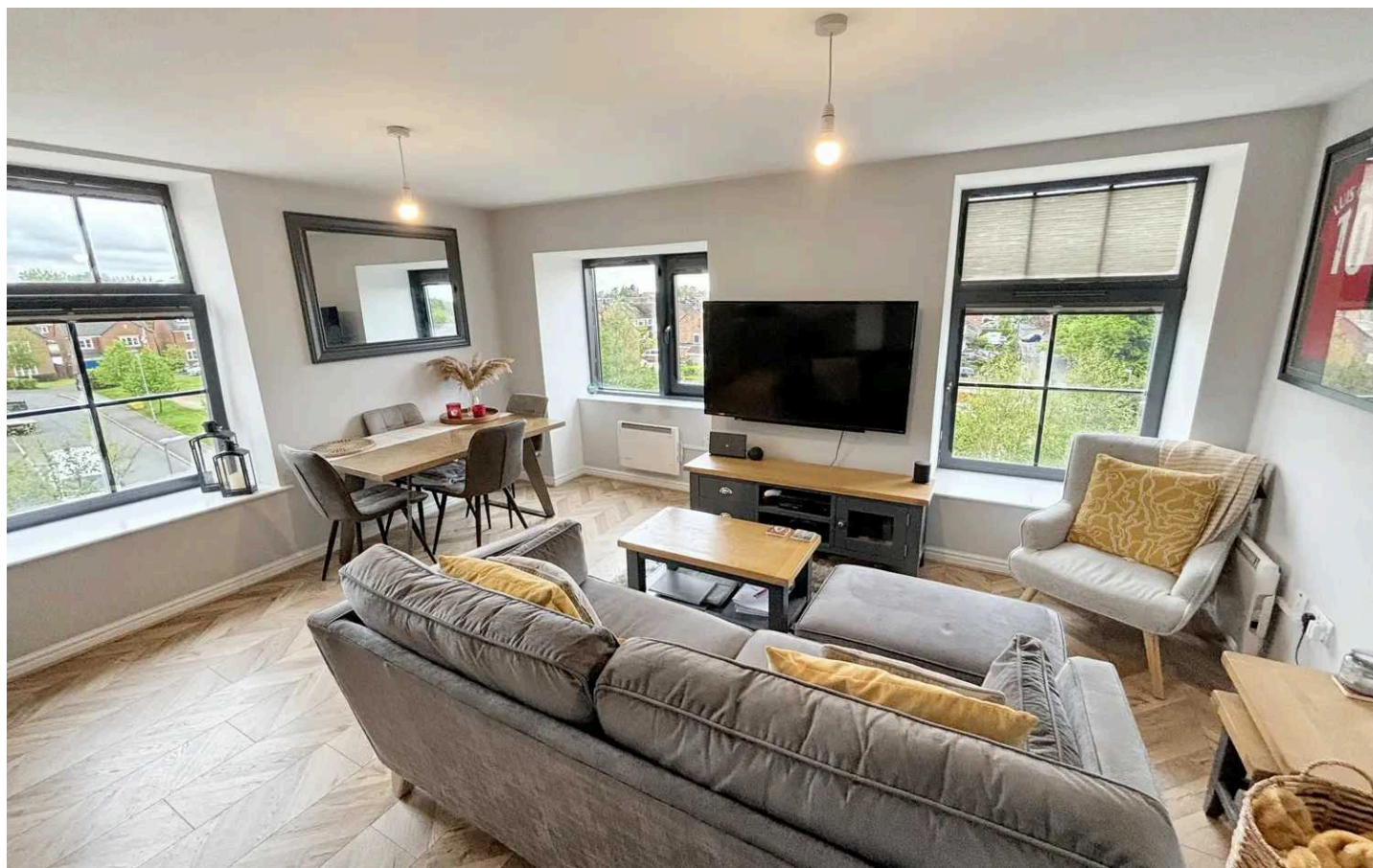
9' 9" x 12' 2" (2.96m x 3.72m)

Window to side.

Bathroom

6' 2" x 7' 10" (1.89m x 2.40m)

Three piece suite comprising panelled bath, pedestal wash hand basin and low level WC. Partly tiled walls.



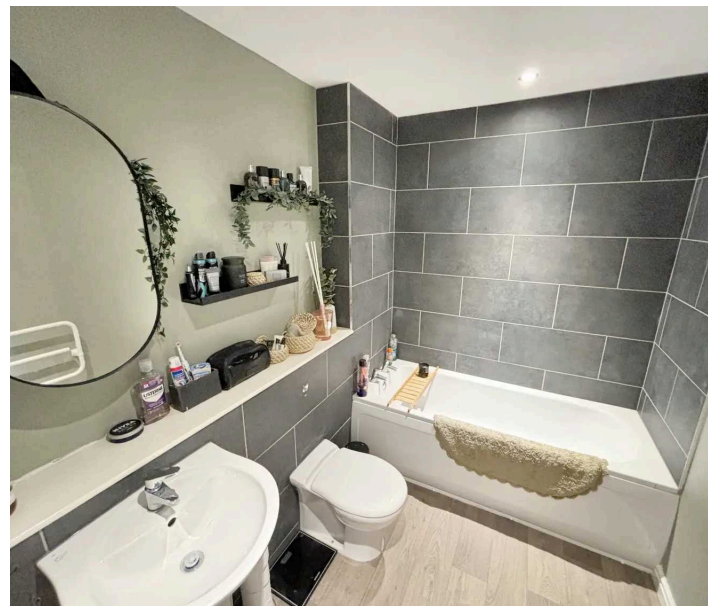
COMMUNAL GARDEN

Communal gardens overlooking canal.

ALLOCATED PARKING

2 Parking Spaces

Two allocated parking spaces.

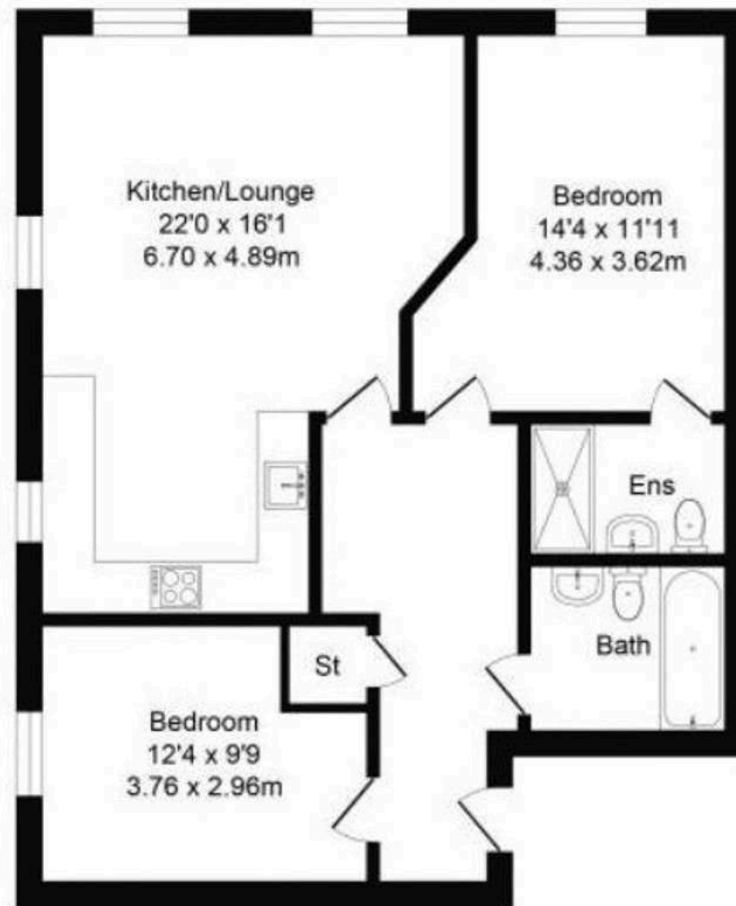




Ainscough Mill, Burscough

Total Approx. Floor Area 783 Sq.ft. (72.7 Sq.M.)

Whilst every effort is made to accurately reproduce these floor plans, measurements are approximate, not to scale and for illustrative purposes only



Approx. Floor
Area 783 Sq.Ft
(72.7 Sq.M.)



Victoria Estates & Property Management

49a Liverpool Road North, Burscough - L40 0SA

01704 897647 • victoria@vepm.co.uk • <http://vepm.co.uk>

