



**4 The Mews, Sefton House Junction Lane**  
**£185,000**

## The Mews, Junction Lane

Three bedroomed Mid Terraced Mews located at Sefton House, accommodation is spread throughout three floors comprising lounge, kitchen, three double bedrooms, two bathrooms and WC. The property benefits from allocated parking, private patio and communal gardens. NO ONWARDS CHAIN

Council Tax band: D

Tenure: Leasehold

- Terraced House
- Mews
- Three Bedrooms
- Two Bathrooms
- Recently Decorated
- Communal Gardens
- Allocated Parking
- NO ONWARDS CHAIN



**Entrance Hall**

Front door into hallway. Doors to lounge, kitchen and WC.  
Stairs to 1st floor.

**Lounge**

16' 0" x 13' 0" (4.87m x 3.95m)

Two windows to front and window to rear. Storage cupboard.

**Kitchen**

12' 5" x 6' 9" (3.78m x 2.05m)

A good range of eye and low level units incorporating a stainless steel sink drainer unit. Built in electric hob with canopy style extractor hood built over and electric oven. Partly tiled walls. Integrated fridge freezer, dishwasher and washing machine. Door to rear communal garden.

**Cloakroom**

Two piece suite comprising pedestal wash hand basin and low level WC. Two windows to front.

**1st Floor Landing**

Doors to two bedrooms and bathroom. Window to rear. Sky light. Stairs to 2nd floor.

**Bedroom One**

16' 1" x 9' 10" (4.90m x 2.99m)

Windows to both front and rear. Built in wardrobe.

**Bedroom Two**

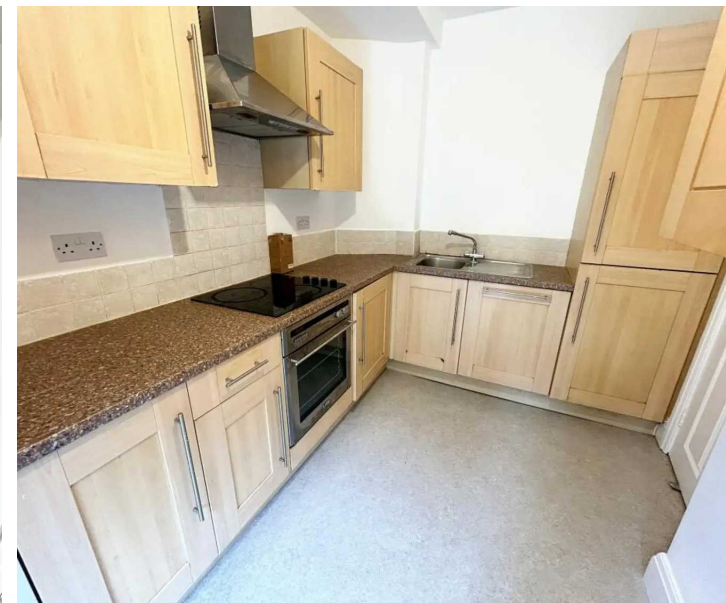
9' 8" x 16' 3" (2.95m x 4.95m)

Windows to both front and rear.

**Bathroom**

6' 5" x 7' 7" (1.96m x 2.30m)

Four piece suite comprising a panelled bath with mixer shower over, pedestal wash hand basin and low level WC. Partly tiled walls. Window to front.



**Landing 2nd Floor**

Sky light, under eaves storage. Doors to bedroom and bathroom.

**Bedroom Three**

Additional measurements 4.15. Two sky lights.

**Shower Room**

6' 4" x 7' 2" (1.92m x 2.18m)

Three piece suite comprising a panelled bath, pedestal wash hand basin and low level WC. Sky light.

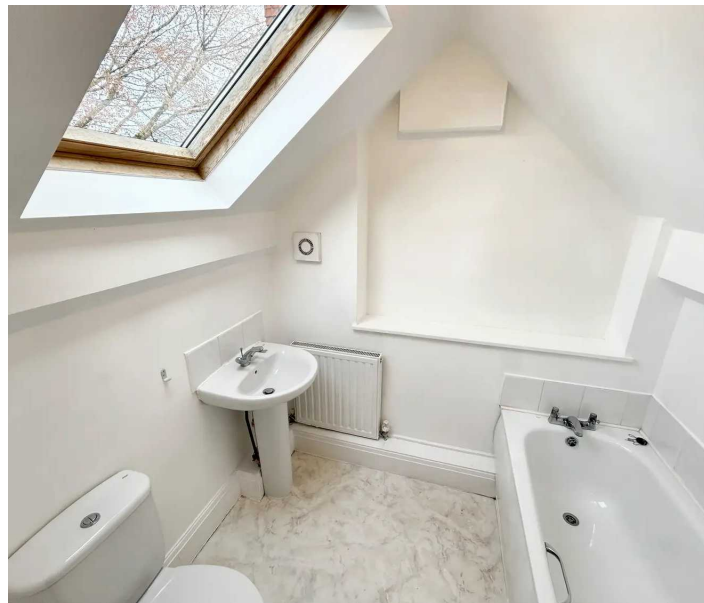
**Communal Garden**

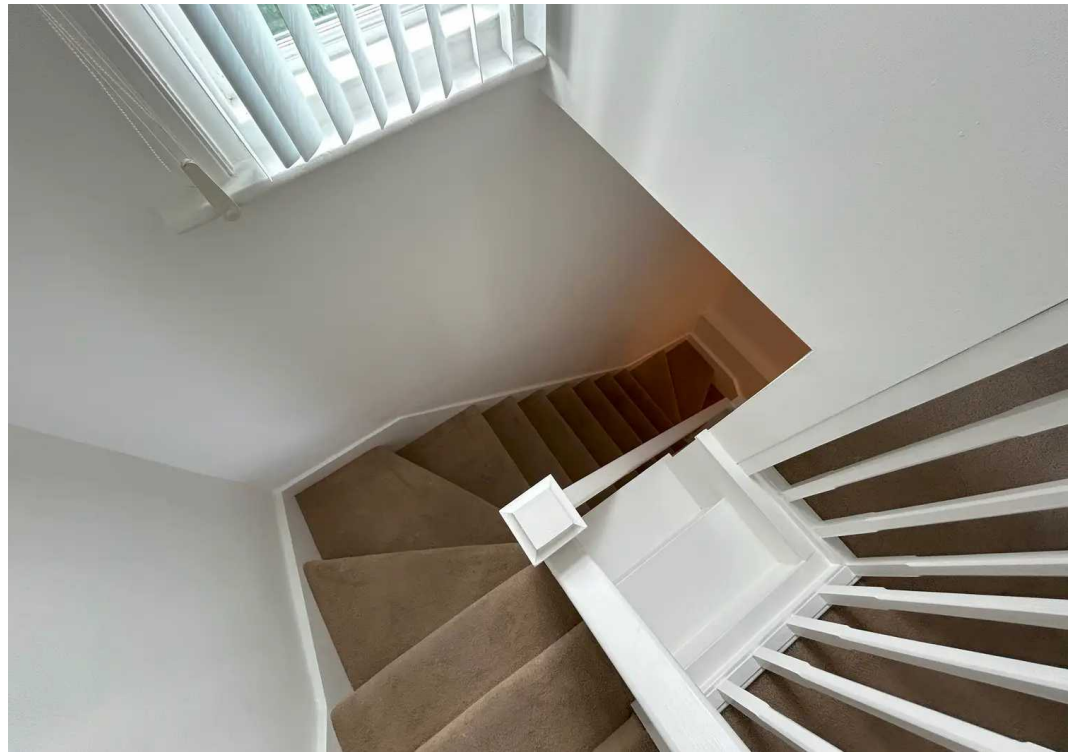
Private rear patio which opens into communal gardens with large lawn.

**ALLOCATED PARKING**

2 Parking Spaces

Allocated parking.









## Victoria Estates & Property Management

49a Liverpool Road North, Burscough - L40 0SA

01704 897647 • victoria@vepm.co.uk •



VICTORIA ESTATES  
&  
PROPERTY MANAGEMENT