



REAL
ESTATE

110, Bentworth Road, London W12 7AH



- 3 double bedrooms
- Renovated in 2024
- South-facing garden
- Lots of storage space
- Drive-in parking for 2 cars
- 2 bathrooms and WC
- Immaculate conditions
- Outdoor Sauna in the garden
- Underfloor heating
- Excellent transport connection

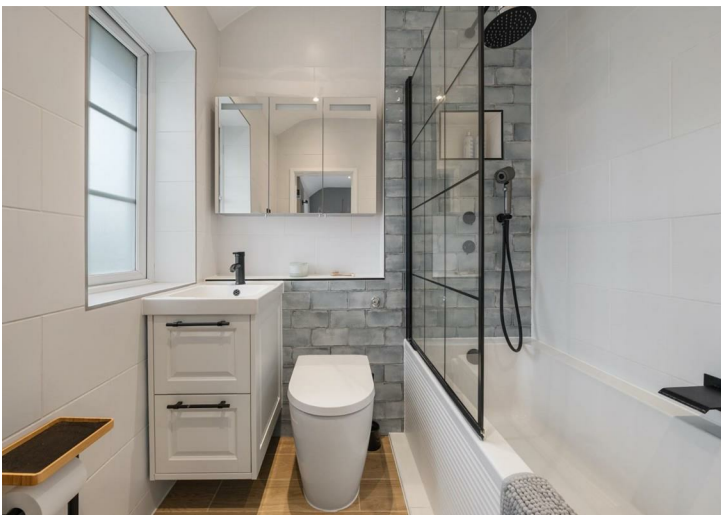
Renovated in 2024, the home boasts a spacious open-plan kitchen and dining area with a full-width extension, enhanced by floor-to-ceiling bifolding doors and skylights that flood the space with natural light. The generous lounge area provides an ideal setting for both relaxation and entertaining.

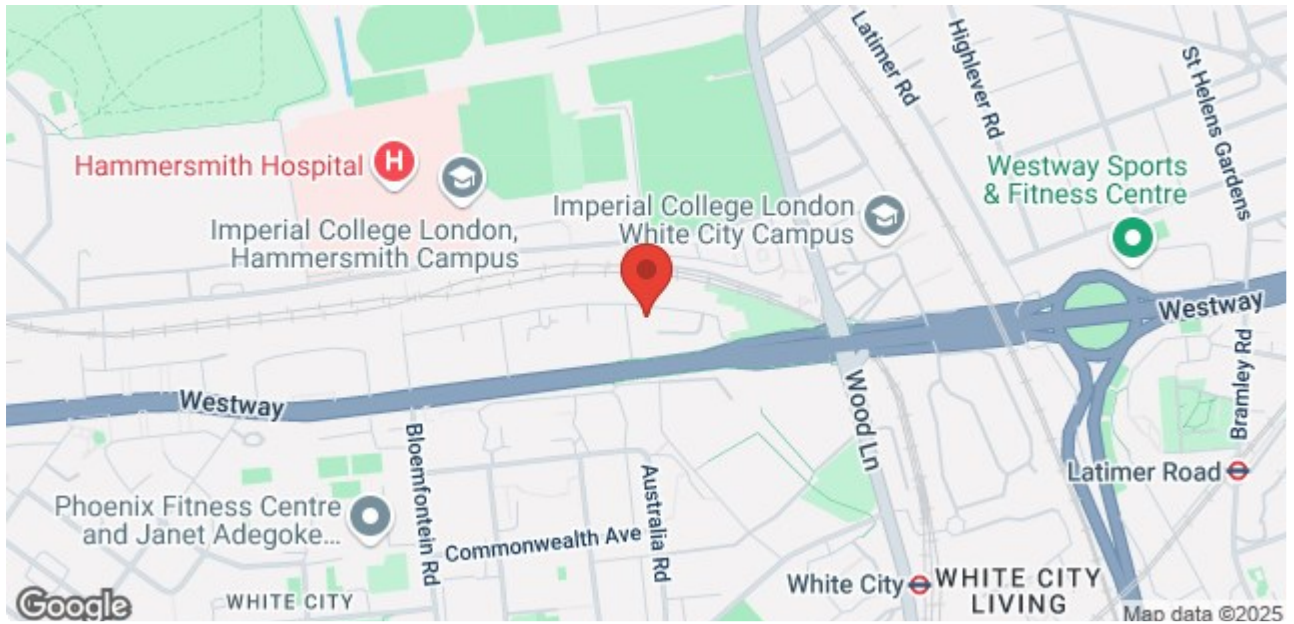
Upstairs, the master bedroom features built-in wardrobes and a modern en-suite bathroom with a bathtub. A second double bedroom also includes built-in storage, and there is an additional family bathroom with a walk-in shower.

The house benefits from ample storage throughout. Underfloor heating on the ground floor and new radiators on the first floor. New electric box, new boiler and hot water tank, water softener is installed.

Price £800,000

7 Marylebone Lane, London, W1U 1DB
T: 0203 871 4074 | welcome@azrealestate.eu



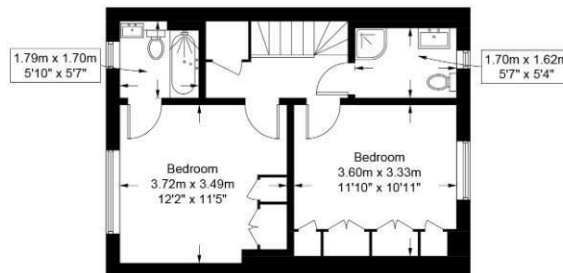
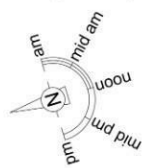


Bentworth Road, W12

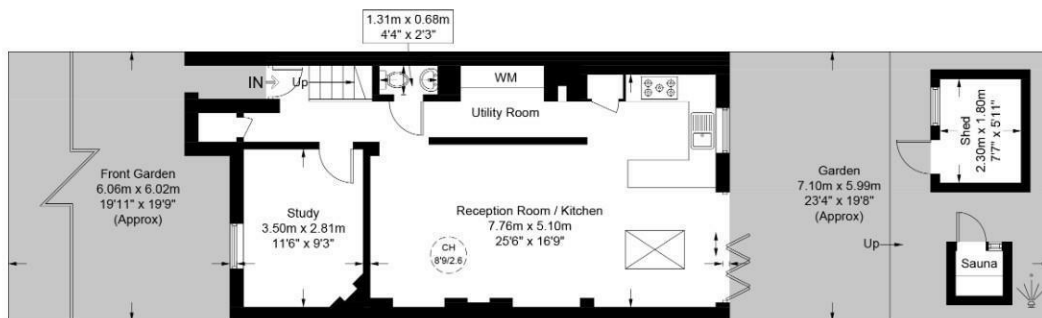
Approximate Gross Internal Area = 1073 sq ft / 99.7 sq m

Shed = 44 sq ft / 4.1 sq m

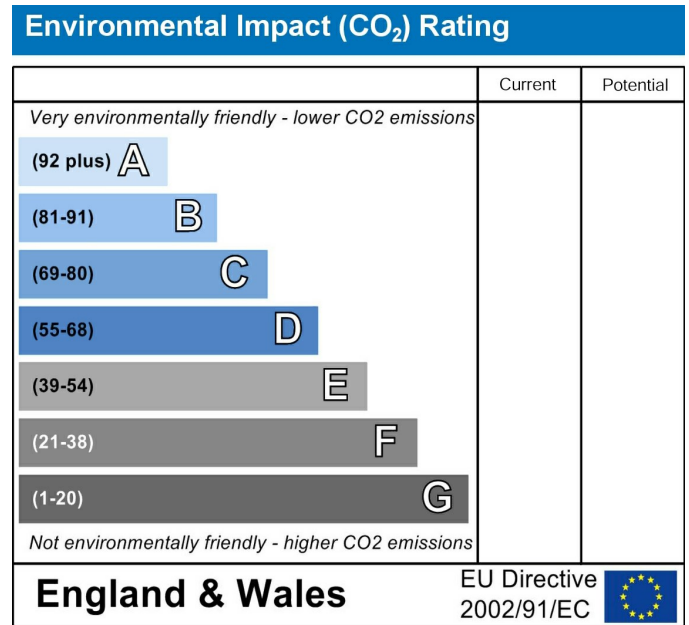
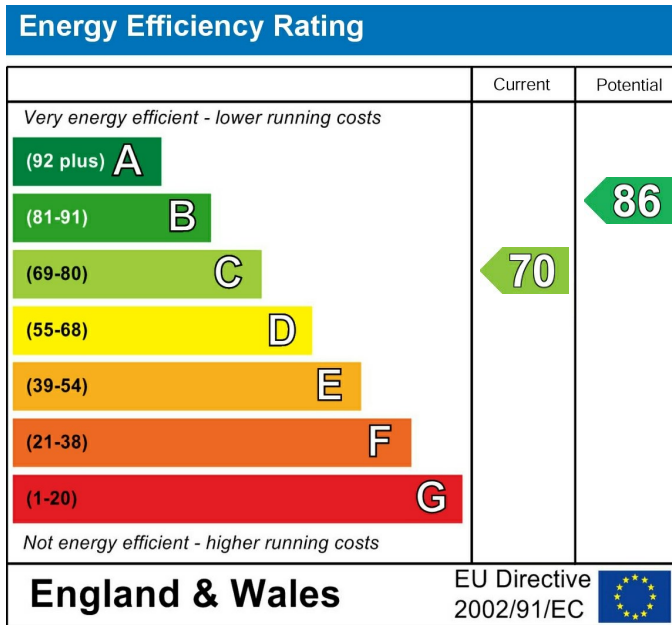
Sauna = 11 sq ft / 1.0 sq m



First Floor



Ground Floor



Beautifully renovated 3-bedroom terraced house offers 1,073 sq ft (99.7 sq m) thoughtfully designed living space, combining contemporary comfort with everyday practicality. Ideally located just minutes from the tube station and Westfield Shopping Centre, it also features a south-facing garden and private driveway with space for two cars.

These particulars, whilst believed to be accurate are set out as a general outline only for guidance and do not constitute any part of an offer or contract. Intending purchasers should not rely on them as statements of representation of fact, but must satisfy themselves by inspection or otherwise as to their accuracy. No person in this firm's employment has the authority to make or give any representation or warranty in respect of the property.

7 Marylebone Lane, London, W1U 1DB
T: 0203 871 4074 | welcome@azrealestate.eu