



REAL
ESTATE

Flat 19, 6, Campden Hill, London W8 7AD



- 1 bed - 1 bath
- Underfloor heating
- Built-in wardrobes
- GYM
- Concierge 24/7 and security
- 4th floor with lift
- Air Conditioning
- Swimming pool with SPA
- Private courtyard garden
- Holland Park at the doorstep

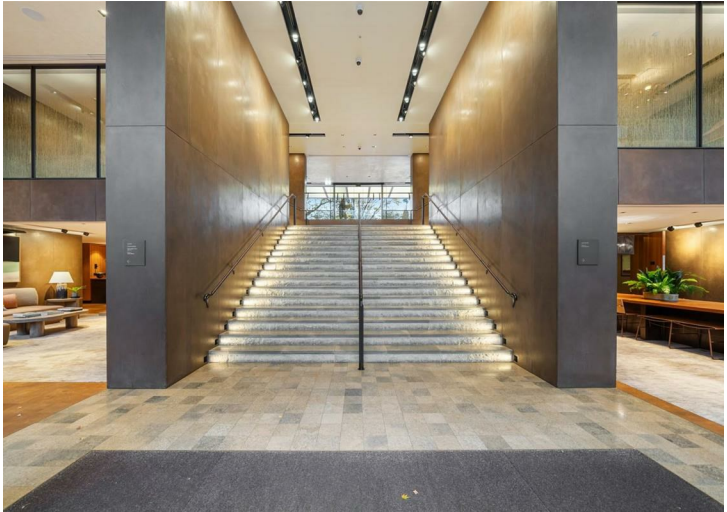
The flat measuring has an open plan reception room with a fully fitted Bulthaup kitchen, bedroom with built-in wardrobes, bathroom and additional storage in the hall area.

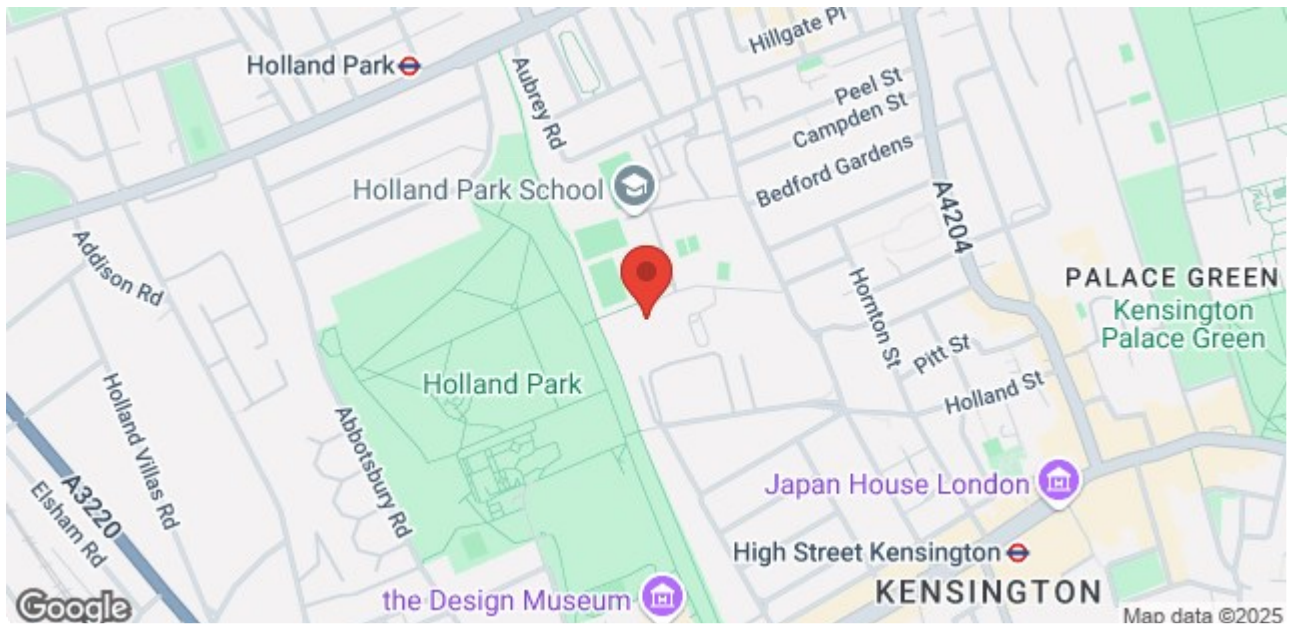
Residents have access to health and well-being facilities, including a gym, swimming pool and spa, private cinema, residents' club lounge, library and courtyard garden.

Situated in a prime location with direct access to Holland Park, this development is discreetly tucked away, providing privacy and peace while remaining close to vibrant city life.

Price £1,450,000

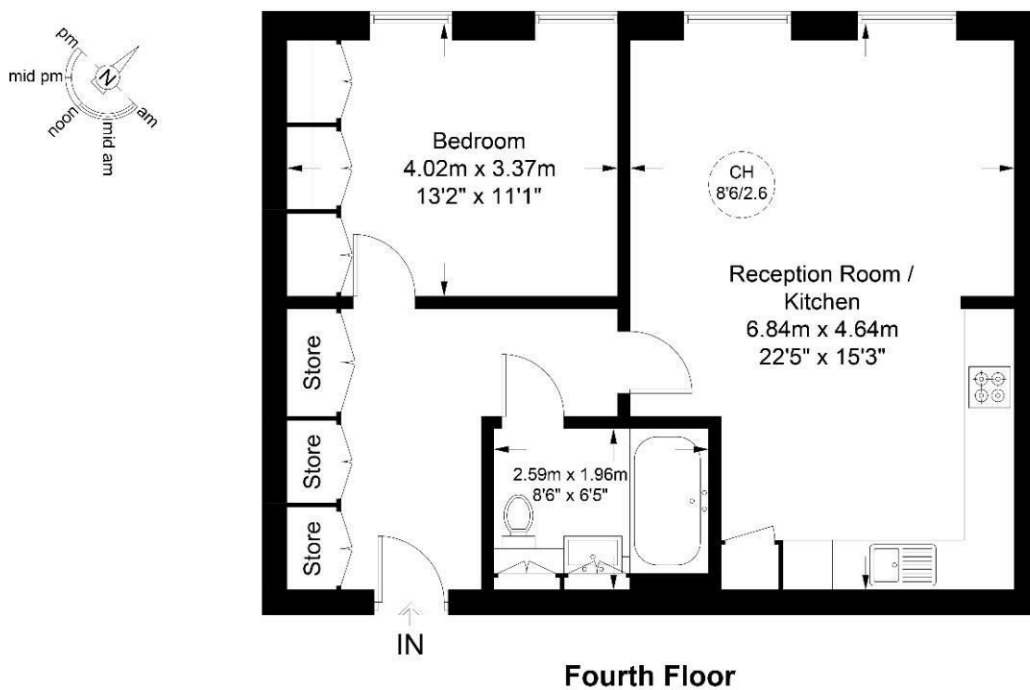
7 Marylebone Lane, London, W1U 1DB
T: 0203 871 4074 | welcome@azrealstate.eu

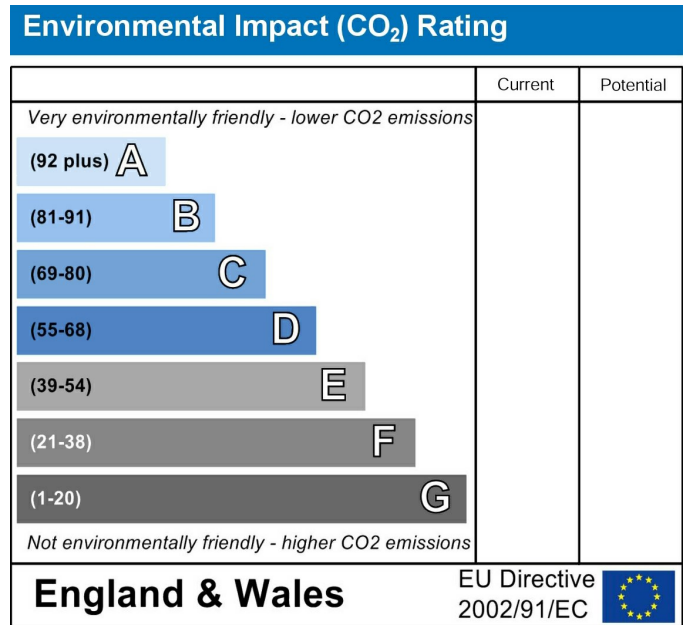
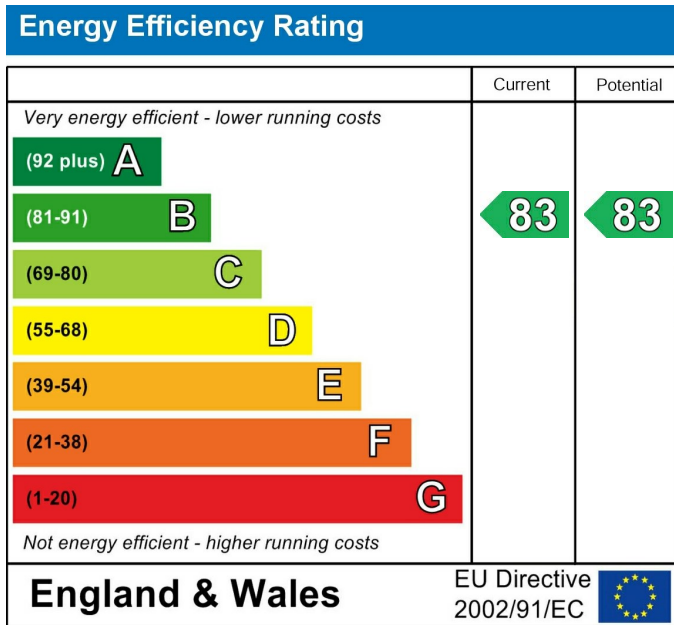




Holland Park Villas, W8

Approximate Gross Internal Area = 640 sq ft / 59.5 sq m





Elegant 640 sq ft (59.5 sq m) 1-bedroom apartment on the 4th floor of the prestigious Holland Park Villas with floor-to-ceiling windows, immaculate facilities and direct access to Holland Park.

These particulars, whilst believed to be accurate are set out as a general outline only for guidance and do not constitute any part of an offer or contract. Intending purchasers should not rely on them as statements of representation of fact, but must satisfy themselves by inspection or otherwise as to their accuracy. No person in this firm's employment has the authority to make or give any representation or warranty in respect of the property.

7 Marylebone Lane, London, W1U 1DB
T: 0203 871 4074 | welcome@azrealestate.eu