



REAL
ESTATE

15A, Malvern Mews, London NW6 5PT



- Detached House
- Integrated kitchen with appliances
- Floor-to-ceiling windows
- Spacious, 2 floors
- 10-year NHBC warranty
- New Build (2024)
- Backyard/patio/garden
- Modern design
- Solar panels
- Completion: May 2024

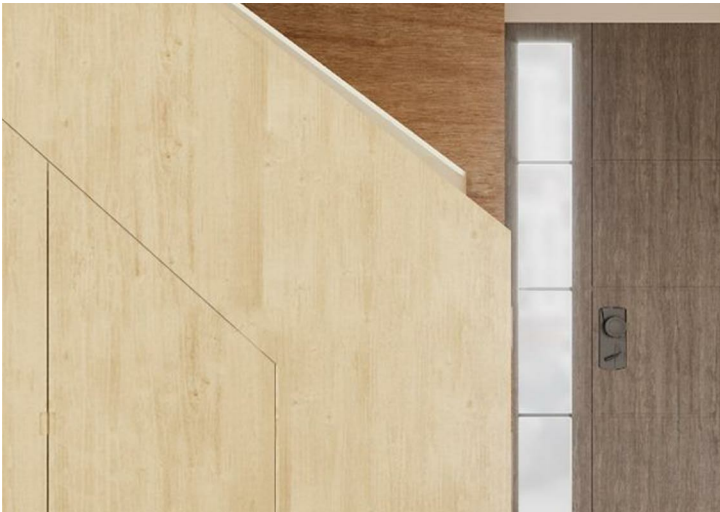
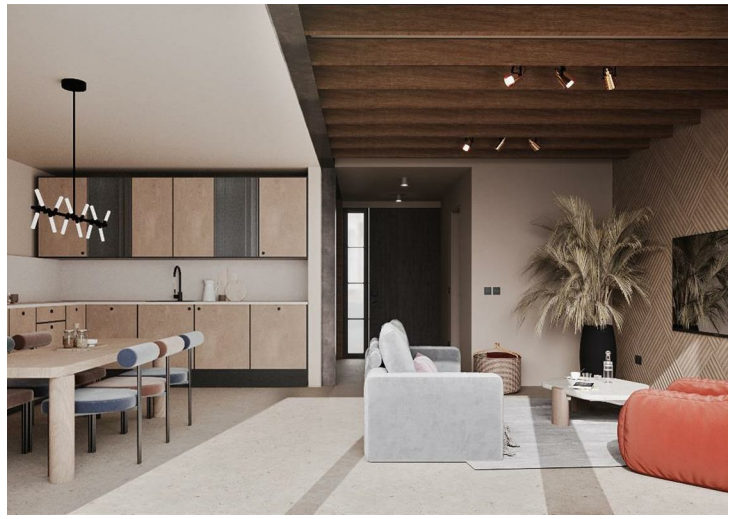
This freehold 2-bed residence offers a fusion of modern design: from the sleek kitchen with state-of-the-art appliances to the luxurious bathrooms and bedrooms with premium fixtures. The reception room benefits from expansive floor-to-ceiling windows, offering an abundance of natural light.

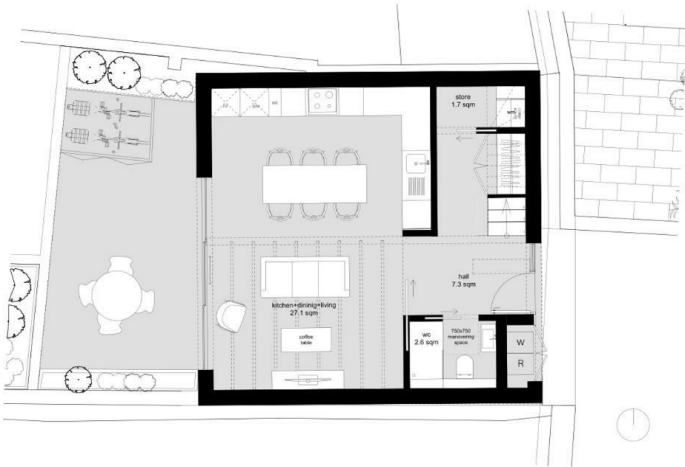
Herringbone brick design will be used for the facade of the house. The walls of the house are crafted from Belgian brick.

The roof will feature a solar panel installation, fulfilling planning requirements and offering an eco-friendly solution to power consumption. This addition is projected to supply up to 30% of the house's electricity needs, presenting a significant opportunity for the future homeowner to enjoy substantial savings on energy costs.

Price Guide £920,000

7 Marylebone Lane, London, W1U 1DB
T: 0203 871 4074 | welcome@azrealestate.eu





Discover this brand new detached house in a quiet Malvern Mews street in Maida Vale. The house offers 937 square feet of space spread across two floors and includes a backyard/patio/garden.

These particulars, whilst believed to be accurate are set out as a general outline only for guidance and do not constitute any part of an offer or contract. Intending purchasers should not rely on them as statements of representation of fact, but must satisfy themselves by inspection or otherwise as to their accuracy. No person in this firm's employment has the authority to make or give any representation or warranty in respect of the property.

7 Marylebone Lane, London, W1U 1DB
T: 0203 871 4074 | welcome@azrealestate.eu