



PERFECT PILLARS
Supporting You



22 Greenham Avenue, Reading, RG2 0WU

£2,000 Per month

- Three Bedrooms
- Spacious Living Room Opening to Garden
- Sought-After Kennet Island Development
- Furnished
- Three-Storey Terraced Townhouse
- Downstairs Cloakroom
- Modern Throughout
- Master Bedroom with En-Suite
- Off-Road Parking
- Excellent Access to M4 & Reading Station

400 Thames Valley Park Drive, Reading, Berkshire, RG6 1PT
01183 048821

info@perfectpillars.co.uk
<https://www.perfectpillars.co.uk/>

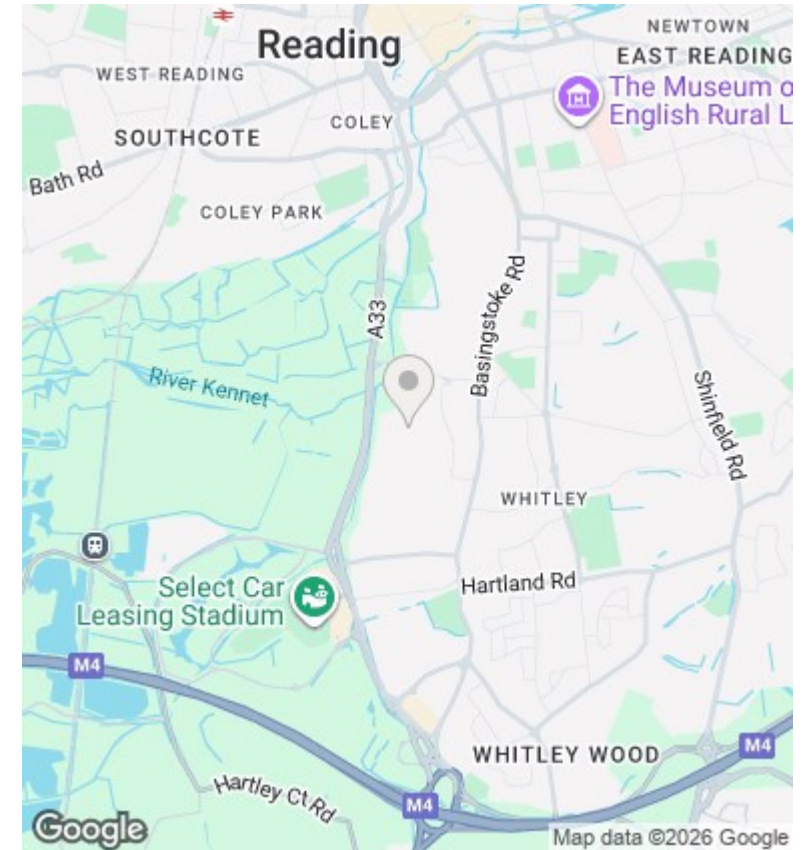
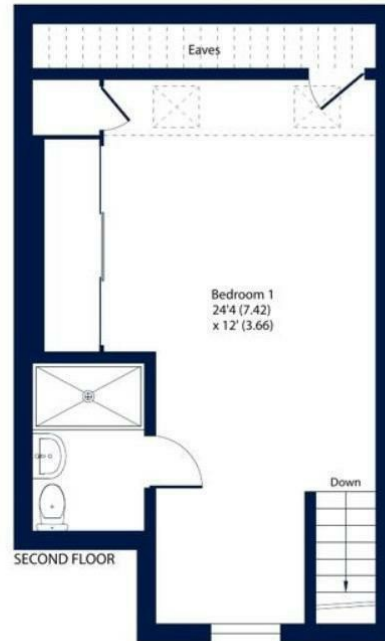
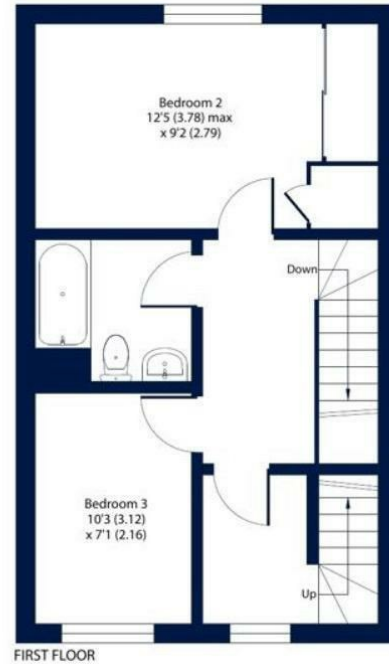
Greenham Avenue, Reading, Berkshire, RG2

Approximate Area = 1172 sq ft / 108.8 sq m

Limited Use Area(s) = 39 sq ft / 3.6 sq m

Total = 1211 sq ft / 112.4 sq m

For identification only - Not to scale



Directions

Viewings

Viewings by arrangement only. Call 01183 048821 to make an appointment.

Council Tax Band

D

EPC Rating:

B

Energy Efficiency Rating		
	Current	Potential
Very energy efficient - lower running costs		
(92 plus) A		
(81-91) B	85	
(69-80) C		
(55-68) D		
(39-54) E		
(21-38) F		
(1-20) G		
Not energy efficient - higher running costs		
England & Wales	EU Directive 2002/91/EC	