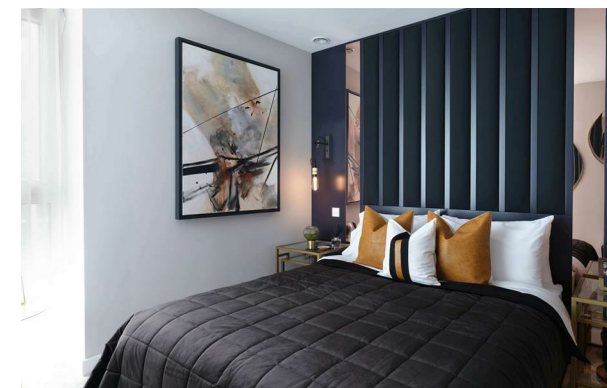
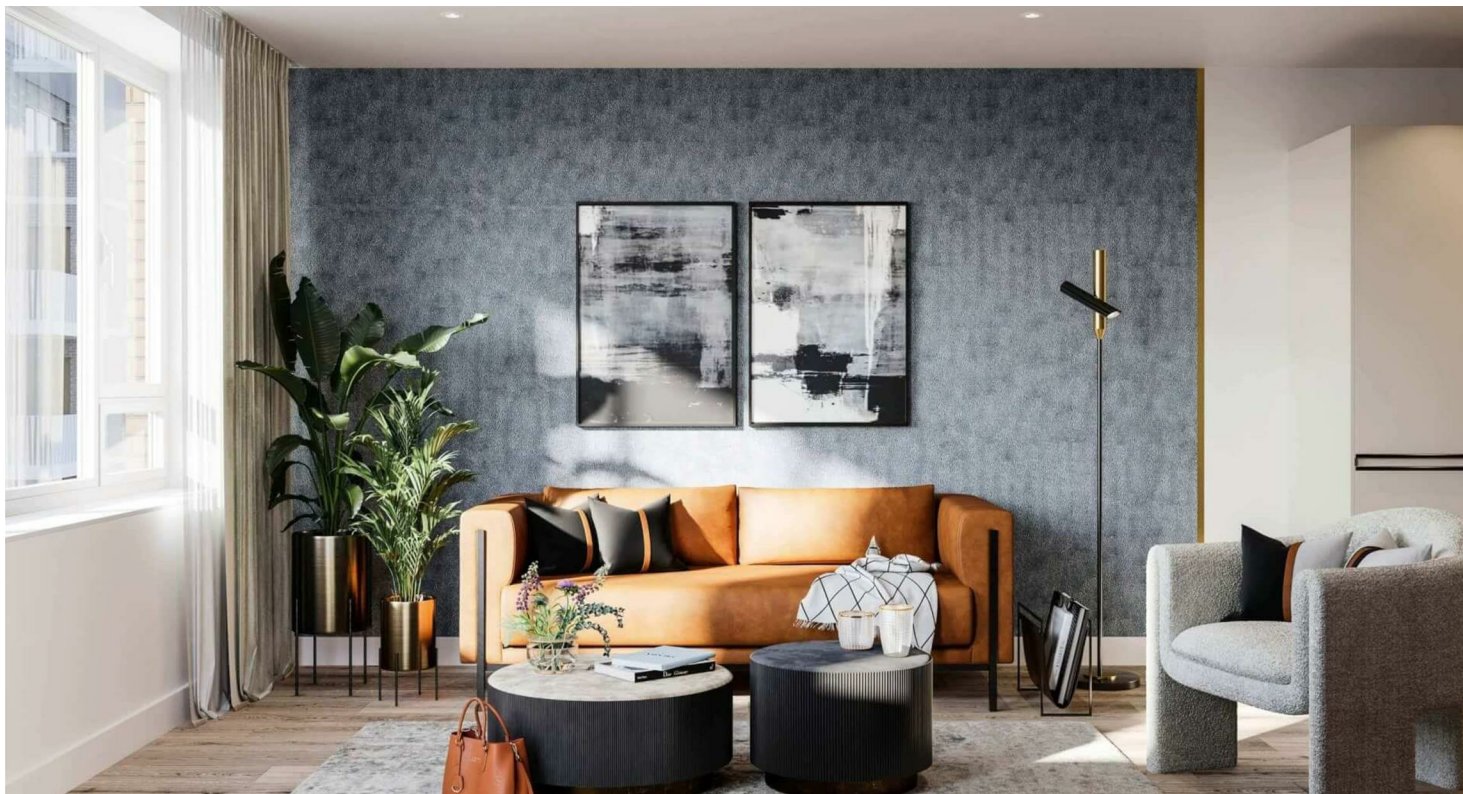




PERFECT PILLARS
Supporting You



7 Nathan Way, London, SE28 0FA

£320,000

- 6th floor apartment
- Estimated completion: Nov - Dec 2025
- 17-acre Berkeley development
- Great transport links with access to Elizabeth line
- New build reassignment
- Rental yield of over 6%
- 12-hour concierge service with exceptional facilities
- Priced below market rate for quick sale
- Private balcony with stunning view
- On-site cafés, supermarkets, restaurants and shops

400 Thames Valley Park Drive, Reading, Berkshire, RG6 1PT
01183 048821

info@perfectpillars.co.uk
<https://www.perfectpillars.co.uk/>

MYRO HOUSE EAST
APARTMENT 7.1-04-02

1 Bedroom
Fourth Floor
Sold

Living / Dining / Kitchen

6.95m x 3.60m

22'9" x 11'9"

Bedroom

3.75m x 3.18m

12'4" x 10'5"

Internal Area

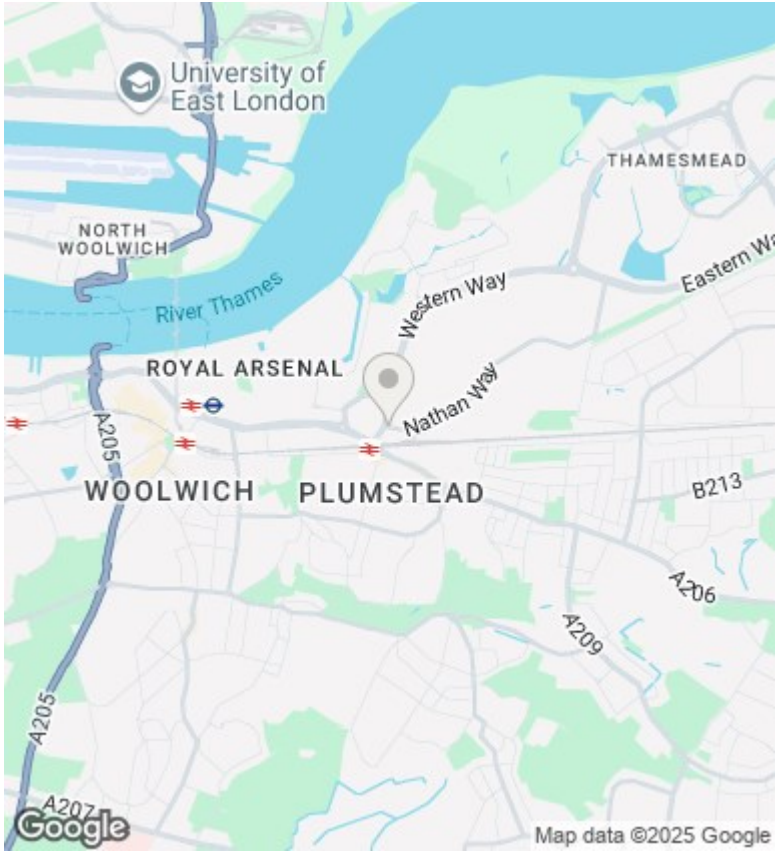
50.7 sq m

546 sq ft

Balcony

3.63m x 1.53m

11'11" x 5'0"



Directions

Viewings

Viewings by arrangement only. Call 01183 048821 to make an appointment.

Council Tax Band

New Build

EPC Rating:

Energy Efficiency Rating		
	Current	Potential
Very energy efficient - lower running costs		
(92 plus) A		
(81-91) B		
(69-80) C		
(55-68) D		
(39-54) E		
(21-38) F		
(1-20) G		
Not energy efficient - higher running costs		
England & Wales	EU Directive 2002/91/EC	