



PERFECT PILLARS  
Supporting You



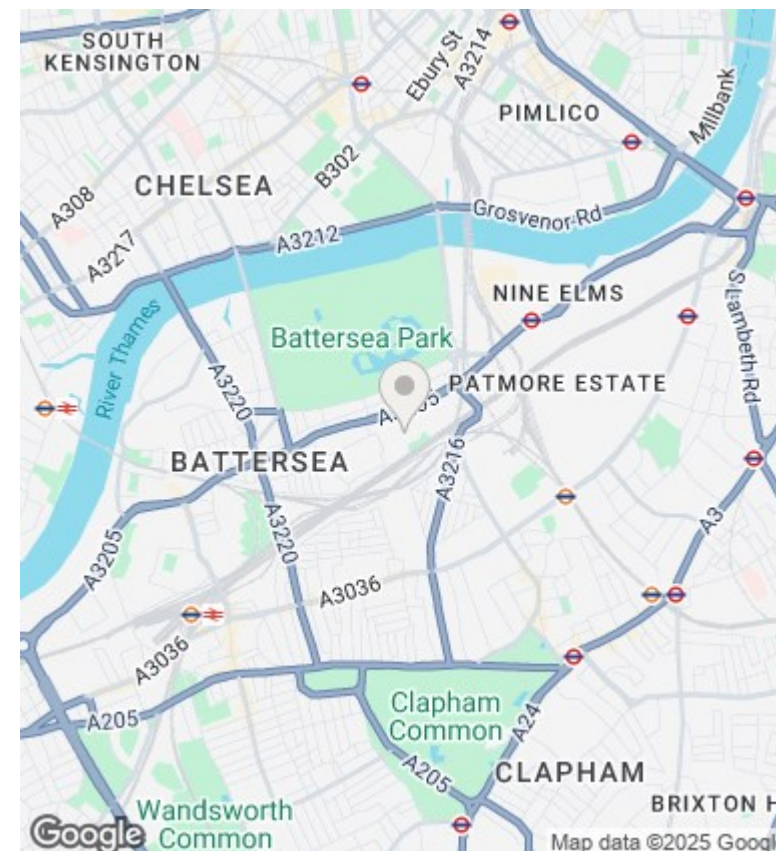
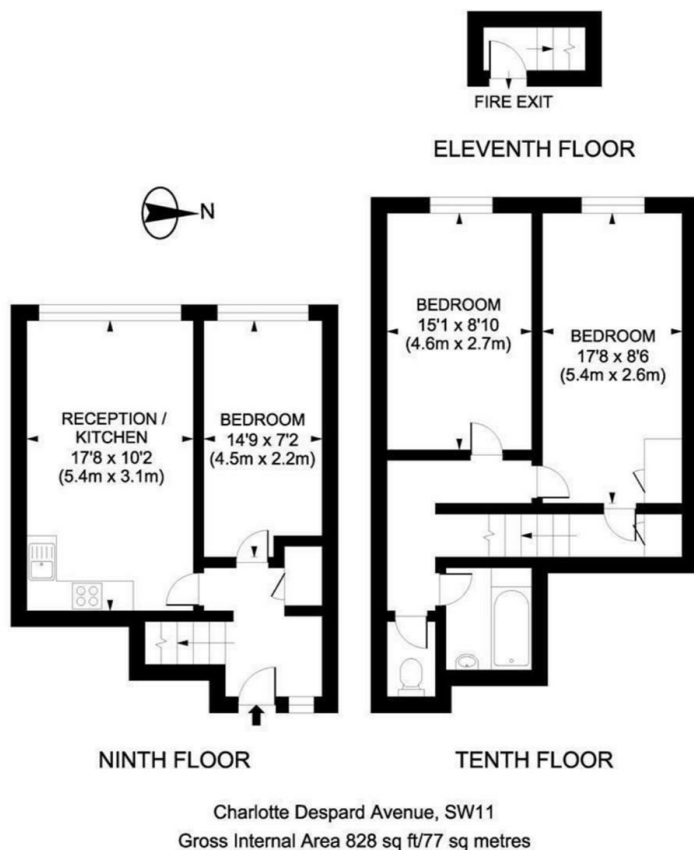
## 82, Arthur Court Charlotte Despard Avenue, London, SW11

£2,500 Per month

- 9th Floor
- Large Open Plan Reception & Kitchen
- Secure Entry System
- Short Walk To Battersea Power Station (Northern Line)
- Split Level Flat
- 3 Spacious Double Bedrooms
- Close to Battersea Park
- Good Natural Light with Superb Views
- Laminate Wooden Flooring
- Excellent Transport Links

400 Thames Valley Park Drive, Reading, Berkshire, RG6 1PT  
01183 048821

info@perfectpillars.co.uk  
<https://www.perfectpillars.co.uk/>



## Directions

## Viewings

Viewings by arrangement only. Call 01183 048821 to make an appointment.

## Council Tax Band

A

## EPC Rating:

D

Energy Efficiency Rating		
	Current	Potential
Very energy efficient - lower running costs		
(92-plus) <b>A</b>		
(81-91) <b>B</b>		
(69-80) <b>C</b>		
(55-68) <b>D</b>		
(39-54) <b>E</b>		
(21-38) <b>F</b>		
(1-20) <b>G</b>		
Not energy efficient - higher running costs		
<b>England &amp; Wales</b>	EU Directive 2002/91/EC	