



PERFECT PILLARS  
Supporting You

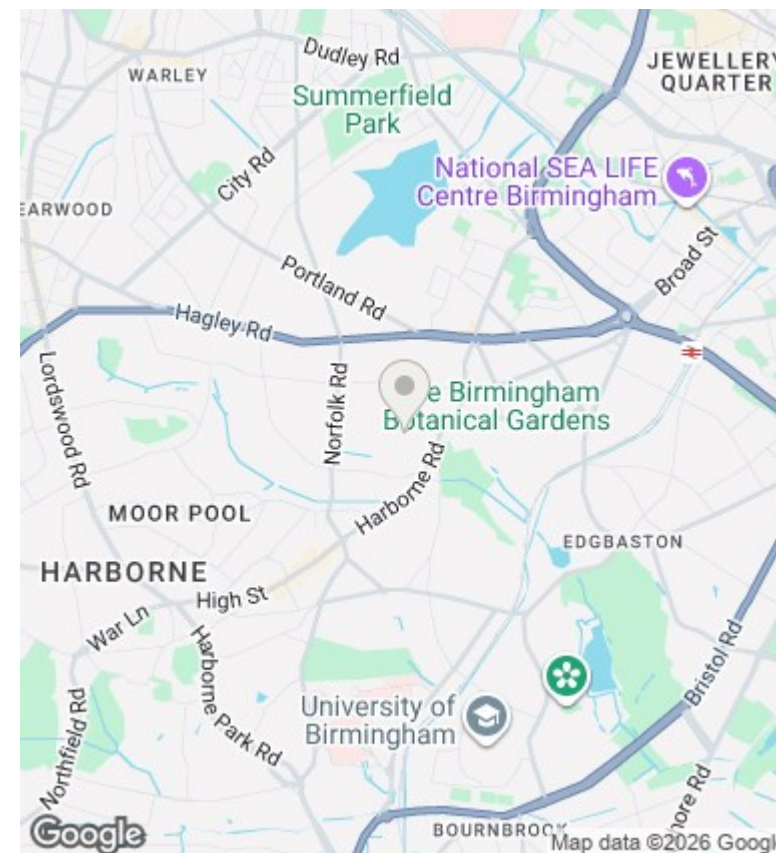
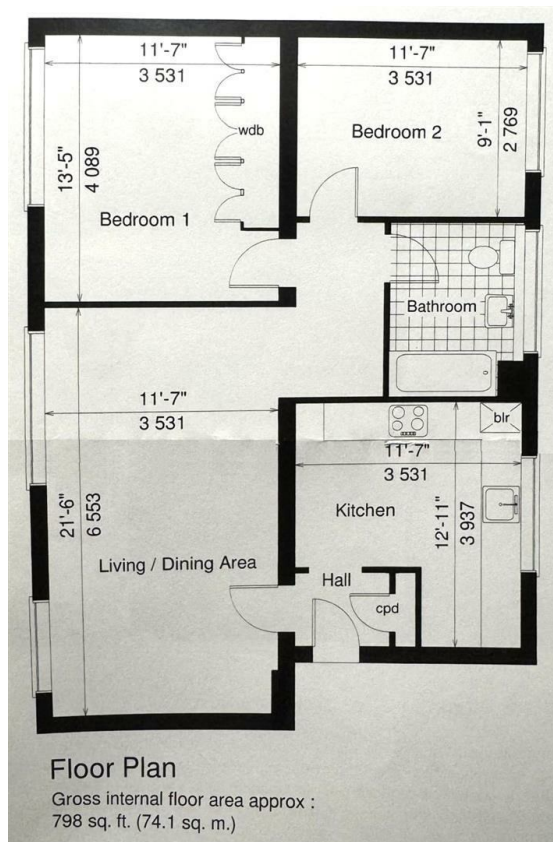


## Flat 23, Wilsford Green, 2 Oak Hill Drive, Birmingham, B15

£188,000

- Second floor, purpose-built block
- Separated garage included
- Close to local amenities
- Communal entrance hall with security phone system
- Long lease
- Regular transport services to Birmingham city centre





## Directions

## Viewings

Viewings by arrangement only. Call 01183 048821 to make an appointment.

## Council Tax Band

C

## EPC Rating:

Energy Efficiency Rating		
	Current	Potential
Very energy efficient - lower running costs		
(92 plus) <b>A</b>		
(81-91) <b>B</b>		
(69-80) <b>C</b>		
(55-68) <b>D</b>		
(39-54) <b>E</b>		
(21-38) <b>F</b>		
(1-20) <b>G</b>		
Not energy efficient - higher running costs		
<b>England &amp; Wales</b>	EU Directive 2002/91/EC	