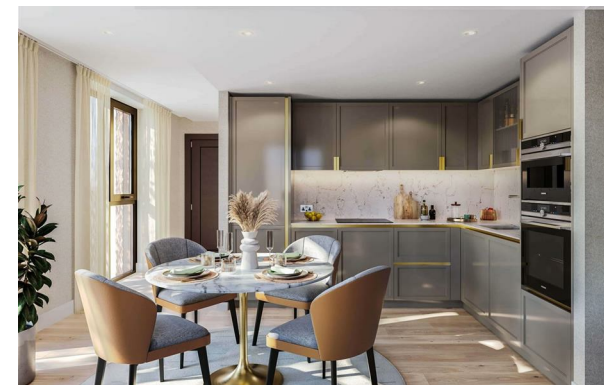




PERFECT PILLARS
Supporting You



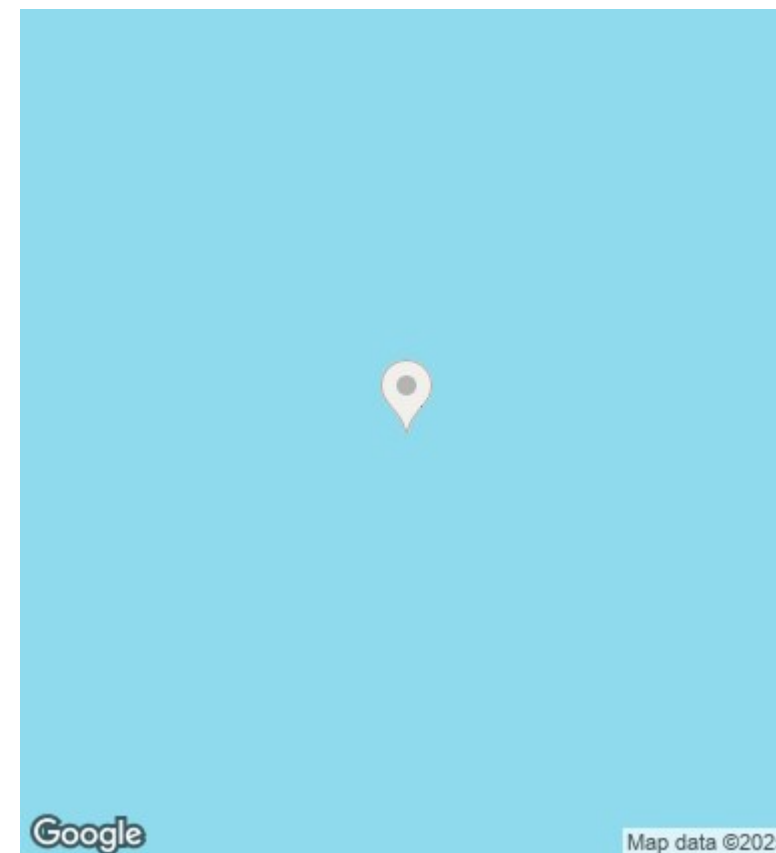
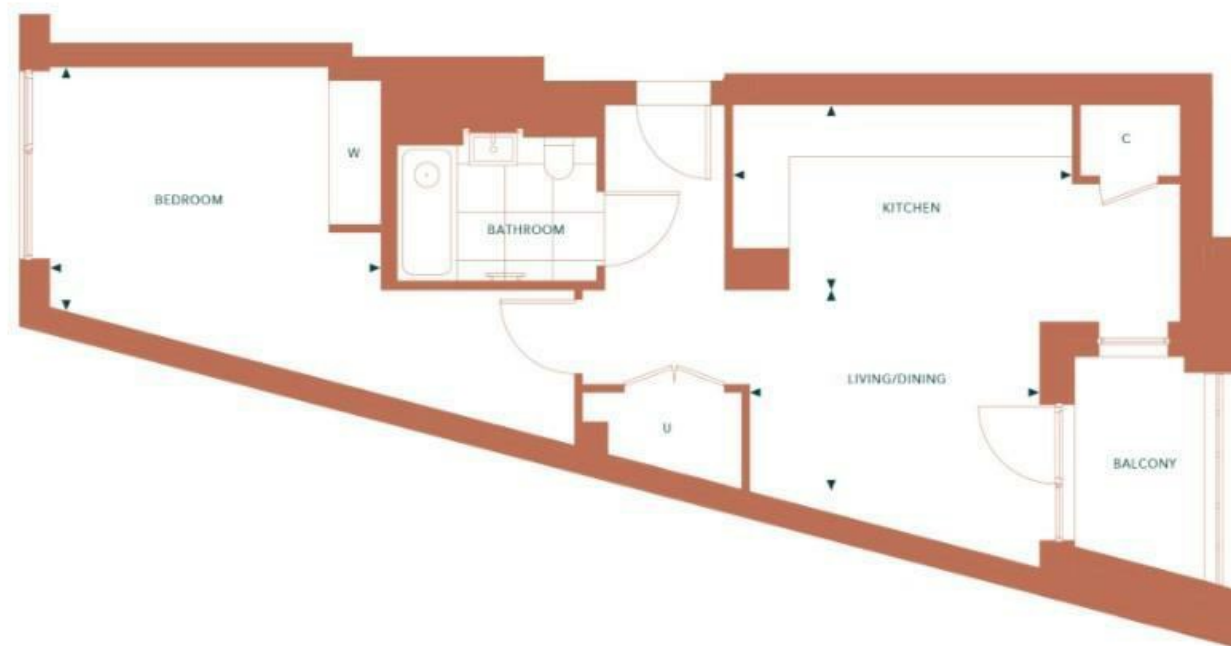
285a Edgware Road, London, W2 1BY

£795,000

- Located in one of central London's most prestigious areas
- Just a minute's walk from Edgware Road station
- Estimated completion Q2 2026
- Residents' cinema, pool, gym & spa
- 24-hour concierge service
- Peppercorn ground rent
- Large bedroom with private balcony
- Private landscaped courtyard gardens
- 999 years lease from 2022

400 Thames Valley Park Drive, Reading, Berkshire, RG6 1PT
01183 048821

info@perfectpillars.co.uk
<https://www.perfectpillars.co.uk/>



Directions

Viewings

Viewings by arrangement only. Call 01183 048821 to make an appointment.

Council Tax Band

New Build

EPC Rating:

| Energy Efficiency Rating | | |
|--|-------------------------|-----------|
| | Current | Potential |
| <i>Very energy efficient - lower running costs</i> | | |
| (92 plus) A | | |
| (81-91) B | | |
| (69-80) C | | |
| (55-68) D | | |
| (39-54) E | | |
| (21-38) F | | |
| (1-20) G | | |
| <i>Not energy efficient - higher running costs</i> | | |
| England & Wales | EU Directive 2002/91/EC | |