



PERFECT PILLARS
Supporting You



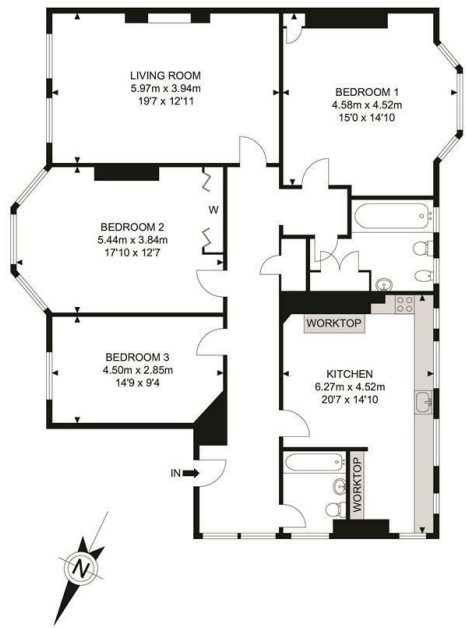
Flat 35, Marlborough Mansions Cannon Hill, West Hampstead, £1,100,000

- Sought after location in West Hampstead
- No chain
- Over 1,400 square feet of living space
- Spacious living room and kitchen
- Three large bedrooms
- Close to West Hampstead underground and overground stations

400 Thames Valley Park Drive, Reading, Berkshire, RG6 1PT
01183 048821

info@perfectpillars.co.uk
<https://www.perfectpillars.co.uk/>

Marlborough Mansions



APPROX. GROSS INTERNAL FLOOR AREA 1402.53 SQ FT / 130.3 SQM

Whilst every attempt has been made to ensure the accuracy of the floor plan contained here, measurements of doors, windows, rooms and any other items are approximations and no responsibility is taken for any error, omission or mis-statement. This plan is for illustrative purposes only and should be used as such by any prospective purchaser. The service, system and appliances shown have not been tested and no guarantee as to their operability or efficiency can be given.

Directions

Viewings

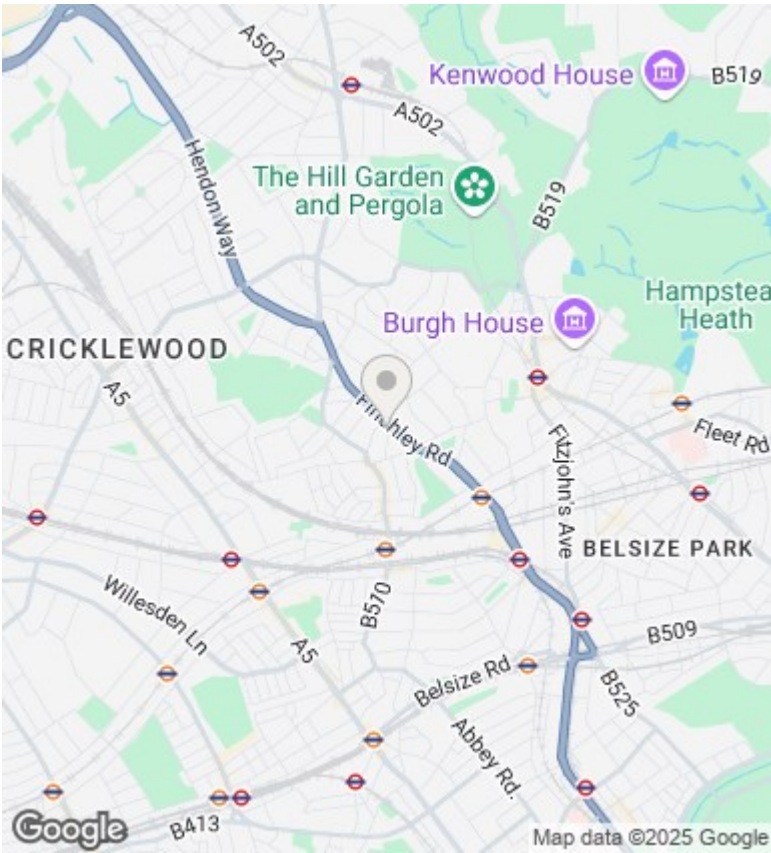
Viewings by arrangement only. Call 01183 048821 to make an appointment.

Council Tax Band

F

EPC Rating:

D



Energy Efficiency Rating		
	Current	Potential
Very energy efficient - lower running costs		
(92 plus) A		
(81-91) B		
(69-80) C		
(55-68) D	66	
(39-54) E		
(21-38) F		
(1-20) G		
Not energy efficient - higher running costs		
England & Wales		EU Directive 2002/91/EC