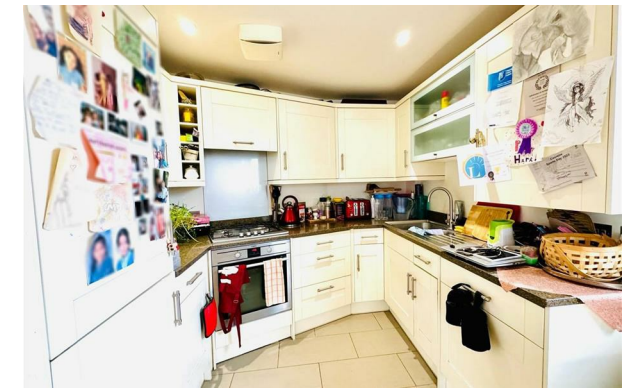




PERFECT PILLARS
Supporting You



Flat 1, Queenswood Court Queens Road, Kingston Upon

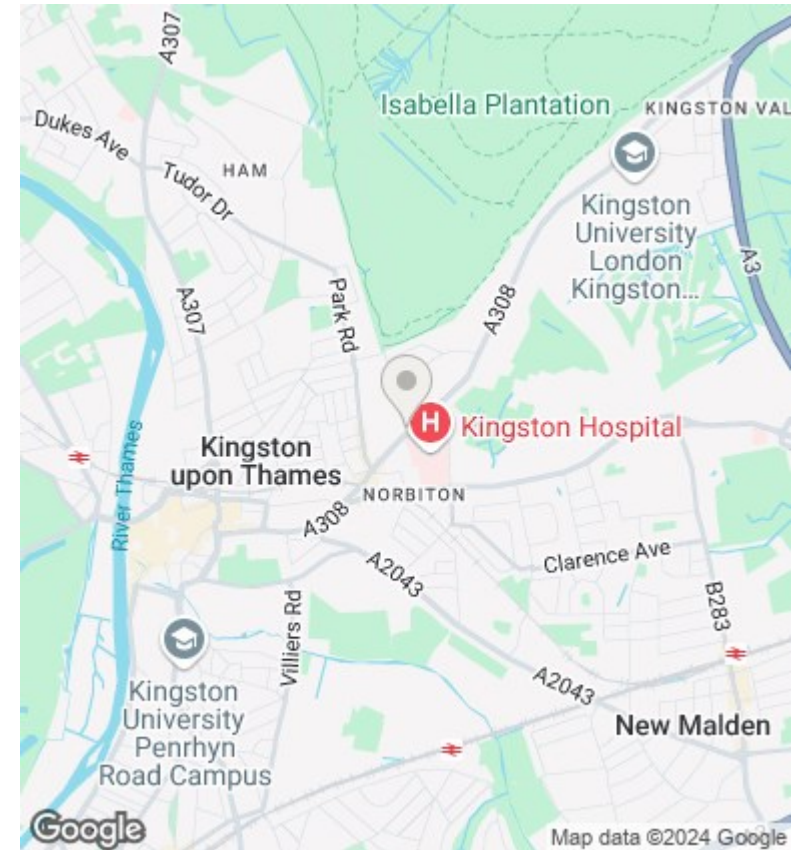
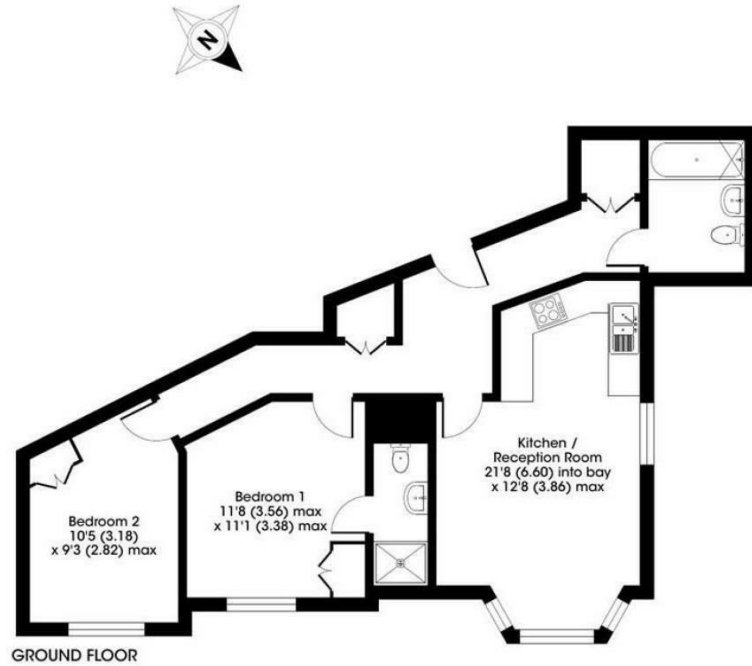
Asking price £435,000

- Allocated Underground Parking
- Two Bathrooms
- Excellent School Catchment Area
- Shops & Cafes Nearby
- Near Richmond Park
- No Onward Chain
- Beautiful Modern Building
- Two Double Bedrooms
- Communal Terrace
- Short Walk to Norbiton Station

400 Thames Valley Park Drive, Reading, Berkshire, RG6 1PT
01183 048821

info@perfectpillars.co.uk
<https://www.perfectpillars.co.uk/>

Approximate Area = 747 sq ft / 69.4 sq m
For identification only - Not to scale



Directions

Viewings

Viewings by arrangement only. Call 01183 048821 to make an appointment.

Council Tax Band

D

EPC Rating:

B

Energy Efficiency Rating		Current	Potential
<i>Very energy efficient - lower running costs</i>			
(92 plus) A			
(81-91) B		84	84
(69-80) C			
(55-68) D			
(39-54) E			
(21-38) F			
(1-20) G			
<i>Not energy efficient - higher running costs</i>			
England & Wales		EU Directive 2002/91/EC	