



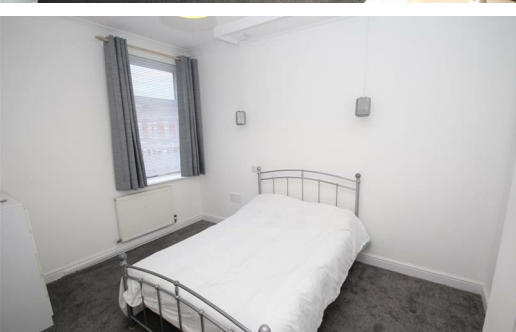
## Flat B 35, North Lonsdale Street Stretford Manchester M32 0PG

### £775 Per calendar month

ONE BEDROOM SELF CONTAINED FLAT!! AVAILABLE NOW !! HOME ESTATE AGENTS are pleased to offer for rent this first floor flat located in the heart of Gorse hill and available now. In brief the property comprises of, entrance hall, lounge, kitchen, bedroom and bathroom. The property also has the option of renting a garage to the rear. Located close to good local amenities and just a short commute into Manchester city centre, Media city and the Trafford centre with great transport links including the M60 Motorway network and the Metro-link station. To arrange a viewing call HOME estate agents 0161 789 8383.

- AVAILABLE NOW !!
- Kitchen
- Good local amenities
- ONE BEDROOM FLAT
- Bedroom
- Great transport links
- Lounge
- Bathroom
- POPULAR LOCATION

**LETTINGS INFO**  
Council Tax Band - A  
EPC Rating - D



**LOCAL EXPERTS THAT GET YOU MOVING**

 [www.homestateagents.com](http://www.homestateagents.com)



Registered Address Vantage House, East Terrace Business Park, Euxton Lane, Euxton PR7 6TB - England  
Company Registration numbers Monton - 9262084 Urmston - 04331861 Stretford - 08259553





**LOCAL EXPERTS THAT GET YOU MOVING**

 [www.homeestateagents.com](http://www.homeestateagents.com)



**Registered Address** Vantage House, East Terrace Business Park, Euxton Lane, Euxton PR7 6TB - England  
**Company Registration numbers** Monton - 9262084 Urmston - 04331861 Stretford - 08259553

Energy Efficiency Rating		
	Current	Potential
<i>Very energy efficient - lower running costs</i>		
(92 plus) <b>A</b>		
(81-91) <b>B</b>		
(69-80) <b>C</b>		
(55-68) <b>D</b>		
(39-54) <b>E</b>		
(21-38) <b>F</b>		
(1-20) <b>G</b>		
<i>Not energy efficient - higher running costs</i>		
<b>England &amp; Wales</b>	EU Directive 2002/91/EC	

Environmental Impact (CO <sub>2</sub> ) Rating		
	Current	Potential
<i>Very environmentally friendly - lower CO<sub>2</sub> emissions</i>		
(92 plus) <b>A</b>		
(81-91) <b>B</b>		
(69-80) <b>C</b>		
(55-68) <b>D</b>		
(39-54) <b>E</b>		
(21-38) <b>F</b>		
(1-20) <b>G</b>		
<i>Not environmentally friendly - higher CO<sub>2</sub> emissions</i>		
<b>England &amp; Wales</b>	EU Directive 2002/91/EC	



**LOCAL EXPERTS THAT GET YOU MOVING**

 [www.homestateagents.com](http://www.homestateagents.com)



Registered Address Vantage House, East Terrace Business Park, Euxton Lane, Euxton PR7 6TB - England  
 Company Registration numbers Monton - 9262084 Urmston - 04331861 Stretford - 08259553