



4 Ash Grove Stretford Manchester M32 9AP

£1,450 Per calendar month

AVAILABLE NOW! HOME ESTATE AGENTS are delighted to offer for rent this immaculate three bedroom semi detached property which is located in this popular Stretford position. The property comprises hallway, lounge, dining room, modern fitted kitchen, utility room, downstairs W/C, shaped landing, three bedrooms and a modern fitted bathroom suite. Externally there is ample off road parking and good size gardens to the front and rear. Please note that the garage at the property is not included in the let of the property. Available now offered on an un-furnished basis. Call HOME On 01617898383 to view!

- AVAILABLE END OF JUNE!
- Immaculate throughout
- Three bedroom semi detached property
- Hallway
- Lounge
- Dining room
- Modern fitted kitchen
- Modern fitted bathroom suite
- Great size rear garden with decked area
- Ample off road parking (Garage not included in the let)



Lettings info

We are advised that the current council tax band is band B.

The current EPC rating is TBC.

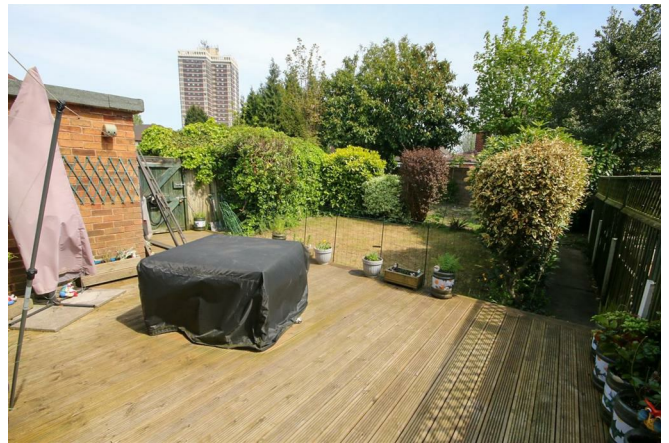


LOCAL EXPERTS THAT GET YOU MOVING

 www.homestateagents.com



Registered Address Vantage House, East Terrace Business Park, Euxton Lane, Euxton PR7 6TB - England
Company Registration numbers Monton - 9262084 Urmston - 04331861 Stretford - 08259553





LOCAL EXPERTS THAT GET YOU MOVING

www.homestateagents.com



Registered Address Vantage House, East Terrace Business Park, Euxton Lane, Euxton PR7 6TB - England
Company Registration numbers Monton - 9262084 Urmston - 04331861 Stretford - 08259553

Energy Efficiency Rating		
	Current	Potential
<i>Very energy efficient - lower running costs</i>		
(92 plus) A		
(81-91) B		
(69-80) C		
(55-68) D		
(39-54) E		
(21-38) F		
(1-20) G		
<i>Not energy efficient - higher running costs</i>		
England & Wales	EU Directive 2002/91/EC	

Environmental Impact (CO ₂) Rating		
	Current	Potential
<i>Very environmentally friendly - lower CO₂ emissions</i>		
(92 plus) A		
(81-91) B		
(69-80) C		
(55-68) D		
(39-54) E		
(21-38) F		
(1-20) G		
<i>Not environmentally friendly - higher CO₂ emissions</i>		
England & Wales	EU Directive 2002/91/EC	



LOCAL EXPERTS THAT GET YOU MOVING

 www.homestateagents.com



Registered Address Vantage House, East Terrace Business Park, Euxton Lane, Euxton PR7 6TB - England
 Company Registration numbers Monton - 9262084 Urmston - 04331861 Stretford - 08259553