



122 MOAT WAY

BRAYTON, YO8 9TE

£800

Nestled in the charming area of Brayton, this stunning two-bedroom apartment offers a perfect blend of modern living and convenience. Spanning 631 square feet, the property was built in 2007 and boasts contemporary design features that cater to today's lifestyle.

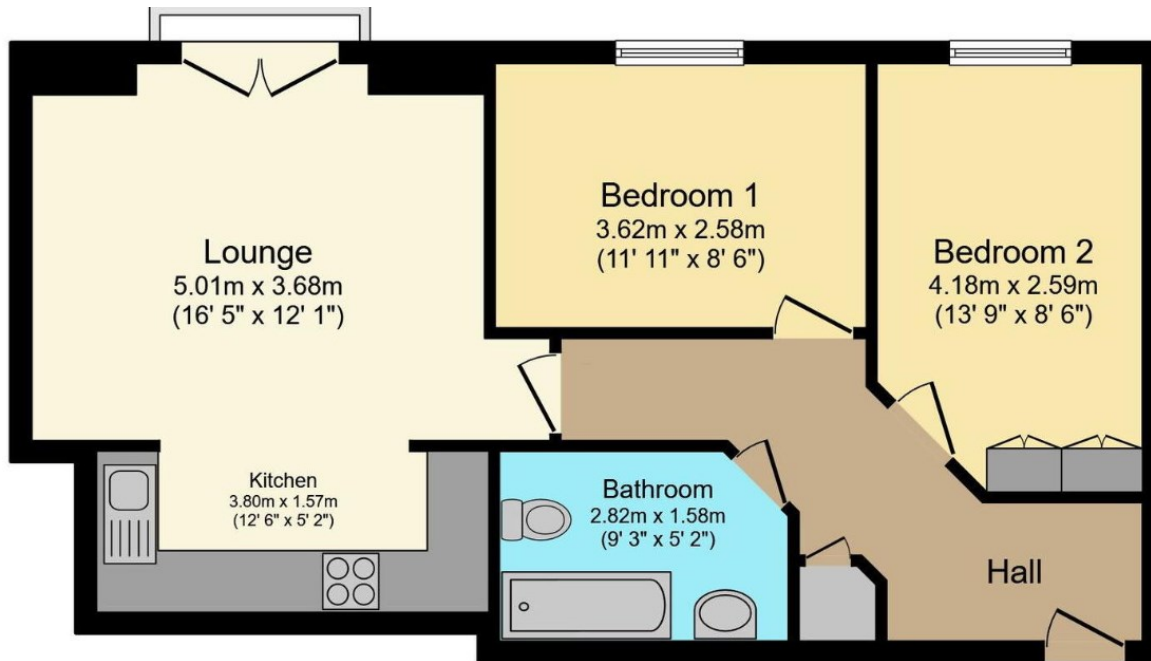
Upon entering, you are welcomed into a spacious reception room, ideal for both relaxation and entertaining. The well-appointed kitchen complements the living space with modern kitchen including integral appliances. The apartment features two comfortable bedrooms, the bathroom is tastefully finished.

The property has a dedicated parking space, a valuable asset in this desirable location. Brayton is known for its friendly community atmosphere and convenient access to local amenities, making it an ideal choice for both couples starting out and those looking to downsize.



Cartref Lettings

L I C E N S E D A G E N T



Floor Plan
Floor area 58.6 sq.m. (631 sq.ft.)

Total floor area: 58.6 sq.m. (631 sq.ft.)

This floor plan is for illustrative purposes only. It is not drawn to scale. Any measurements, floor areas (including any total floor area), openings and orientations are approximate. No details are guaranteed, they cannot be relied upon for any purpose and do not form any part of any agreement. No liability is taken for any error, omission or misstatement. A party must rely upon its own inspection(s). Powered by www.Propertybox.io



Energy Efficiency Rating		
	Current	Potential
Very energy efficient - lower running costs		
(92 plus) A		
(81-91) B		
(69-80) C		
(55-68) D		
(39-54) E		
(21-38) F		
(1-20) G		
Not energy efficient - higher running costs		
England & Wales	EU Directive 2002/91/EC	

Agents Note: Whilst every care has been taken to prepare these particulars, they are for guidance purposes only. All measurements are approximate and are for general guidance purposes only and whilst every care has been taken to ensure their accuracy, they should not be relied upon and potential buyers/tenants are advised to recheck the measurements

Cartref
West End Farmhouse Barmby Road
Asselby
DN14 7HE

07394061091
info@cartref-lettings.co.uk
www.cartref-lettings.co.uk


Cartref Lettings
LICENSED AGENT