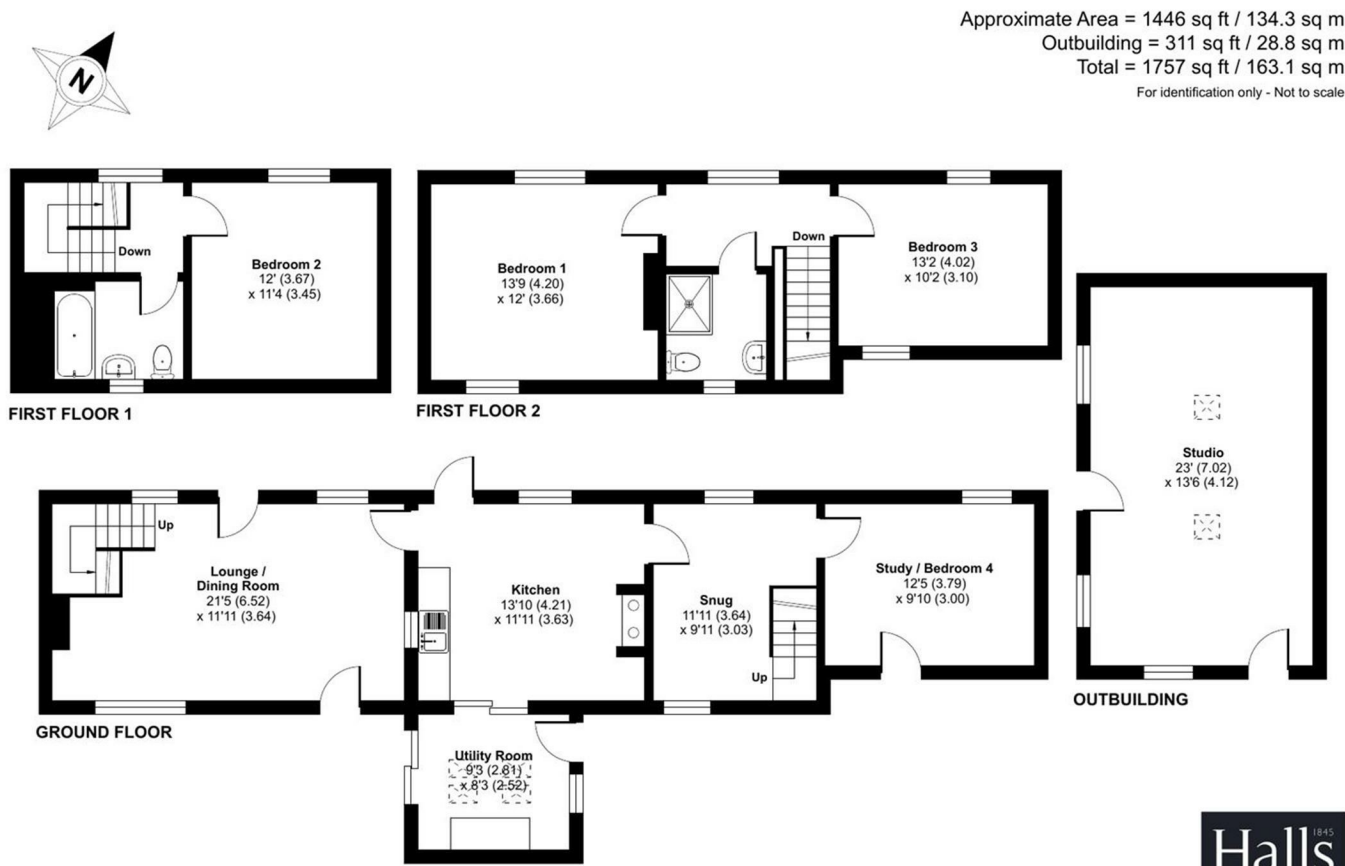


FOR SALE

8-10 School Road, Coalbrookdale, Telford, TF8 7DY



Floor plan produced in accordance with RICS Property Measurement 2nd Edition, Incorporating International Property Measurement Standards (IPMS2 Residential). © nrichcom 2025. Produced for Halls. REF: 1261570

Halls



Halls 1845

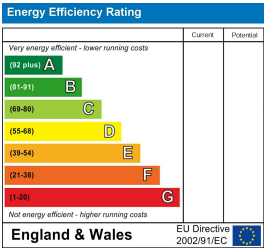
FOR SALE

Offers in the region of £425,000

8-10 School Road, Coalbrookdale, Telford, TF8 7DY

Property to sell? We would be delighted to provide you with a free no obligation market assessment of your existing property. Please contact your local Halls office to make an appointment. **Mortgage/financial advice.** We are able to recommend a completely independent financial advisor, who is authorised and regulated by the FCA. Details can be provided upon request. **Do you require a surveyor?** We are able to recommend a completely independent chartered surveyor. Details can be provided upon request.

Energy Performance Rating



This property is an exquisite Grade II Listed property, dating back to the 1780s, situated in the highly sought-after village of Coalbrookdale. This distinctive home elegantly merges historic charm with contemporary living, offering captivating woodland views, expansive interiors, and serene outdoor spaces. Comprising three generously sized double bedrooms, a welcoming lounge with an inglenook fireplace, and a traditional kitchen with a Rayburn cooker, this property presents an exceptional opportunity to enjoy both character and practicality. As the property was originally a row of cottages, there is the potential to convert one end of the property into a self contained annex with its own private courtyard garden (STTP).



Halls 1845

01952 971800

Telford Sales
32 Market Street, Wellington, Telford, TF1 1DT
E: telford@halls.gb.com

RICS
Regulated by RICS

The Property Ombudsman

OnTheMarket.com

APPROVED CODE
TRADING STANDARDS UK

IMPORTANT NOTICE. Halls Holdings Ltd and any joint agents for themselves, and for the Vendor of the property whose Agents they are, give notice that: (i) These particulars are produced in good faith, are set out as a general guide only and do not constitute any part of a contract (ii) No person in the employment of or any agent of or consultant to Halls Holdings has any authority to make or give any representation or warranty whatsoever in relation to this property (iii) Measurements, areas and distances are approximate, Floor plans and photographs are for guidance purposes only (photographs are taken with a wide angled / zoom lenses) and dimensions shapes and precise locations may differ (iv) It must not be assumed that the property has all the required planning or building regulation consents. Halls Holdings, Bowmen Way, Shrewsbury, Shropshire SY4 3DR. Registered in England 06597073.

halls.gb.com

Residential / Fine Art / Rural Professional / Auctions / Commercial

halls.gb.com

01952 971800



2 Reception Room/s



3 Bedroom/s



2 Bath/Shower Room/s



- Charming Character Property.
- Sought-After Location.
- Ample Parking.
- Well-Presented Throughout.
- Stunning Views.
- Separate Workshop.

DESCRIPTION

This charming and historic property at School Road is Grade II listed and dates back to 1777, offering a perfect blend of original character features and modern conveniences, situated in the peaceful and scenic setting of Coalbrookdale. The ground floor boasts a spacious lounge/diner with an inglenook fireplace, multi-fuel stove, solid oak flooring, dual aspects, and access to the courtyard garden. The room also includes radiators, telephone and TV points, and stairs leading to the first floor, with annexe potential. The kitchen is well-appointed with oak flooring, a Belfast sink, dishwasher, a gas Rayburn cooker in the inglenook, and central units, along with access to the garden room. The garden room is equipped with plumbing for a washing machine and access to the courtyard gardens.

A cosy library/snug features a moors-style tiled floor, a staircase to the first floor, under-stairs storage, dual aspects, and an internet point. Additionally, there is a study/bedroom four with access to the rear courtyard, a gas boiler, and dual aspects. On the first floor, the landing includes a large storage shelf, leading to a double bedroom with views towards woodland. The family bathroom features a bath, WC, wash hand basin, large cupboard, and loft access. The second double bedroom has an original listed window, dual aspects, and exposed floorboards. The principal bedroom suite boasts an original cast-iron fireplace with a wooden mantle, dual aspects, high ceilings, alcove storage, views over the terrace garden, and exposed floorboards.

The heritage shower room is equipped with a three-piece suite, a power shower, WC, and wash hand basin. Outside, the property is surrounded by stone-walled courtyards, with steps leading to the terrace gardens. The terrace garden includes a well-stocked fish pond, a shed with power, a storage shed, a seated area, and views over Coalbrookdale. The parking area accommodates up to three vehicles, with an electric point and water tap. Adjacent to the property, there is a private garden with parking space for a vehicle or caravan, iron gates, a lawned area with apple, plum, and cherry trees, a historic wall, a wood store, and a seating area. The large studio/workshop offers power sockets, windows overlooking the garden, and sky lanterns. Throughout the property, windows have been replaced, and most rooms benefit from dual aspects, ensuring a bright and airy atmosphere. The layout of the property also opens up the potential to create a self-contained annexe (STPP), with the property formally a row of cottages.

LOCATION

The village is nestled along the River Severn and surrounded by scenic hills and woodland with views to Vane Coppice. Offering both a rich industrial heritage and beautiful natural landscapes. Its proximity to Ironbridge and the UNESCO World Heritage site makes it a key area for both history enthusiasts and nature lovers whilst still being close to local amenities.

DIRECTIONS

From our office on Market Street in Wellington, turn left onto Bridge Road. Follow the road round for 0.4 miles before taking the second exit at the roundabout onto Glebe Street. Turn right in 310 yards onto High Street and stay on this road for 2.4 miles before taking the fourth exit at the roundabout onto the A5223. At the next roundabout in 0.9 miles take the third exit onto the Horsehay Bypass. In 0.5 miles take the second exit at the roundabout, staying on the Horsehay Bypass. At the next roundabout in 0.2 miles, take the second exit again onto Jiggers Bank. Turn left in 50 yards onto Woodside and left again in 260 yards onto School Road. In approximately 100 yards you will find the property on your left-hand side.

ROOMS

GROUND FLOOR

LOUNGE/DINING ROOM

The lounge with dining area is a spacious and inviting room, featuring a charming inglenook fireplace. A staircase leads to one of the first-floor bedrooms and bathroom, while a door opens onto the veranda. Another door leads to the front of the property, with two windows providing views of the front.

KITCHEN/BREAKFAST ROOM

The traditional kitchen offers a beautiful oak floor and a Belfast sink. It is equipped with a gas Rayburn cooker set in an inglenook, a dishwasher, and has a range of wall and base units. There is access to the garden room, making it ideal for family meals and entertaining.

UTILITY ROOM

The utility room is bright and airy, featuring skylight windows, a glass door, and an additional window that all provide plenty of natural light and offer views of the garden.

OFFICE

The versatile room, currently used as an office, features a window to the front and a stable door leading to the garden, offering a flexible space with both natural light and direct outdoor access.

SNUG

Featuring a tiled floor, dual-aspect windows, and an under-stairs storage area, the snug is a tranquil space to relax. The room also has an internet point and offers easy access to the first-floor staircase.

FIRST FLOOR

BEDROOM TWO

Bedroom one is accessed via its own staircase from the lounge/dining room. This double bedroom features a window with views towards the nearby woodland.

BATHROOM

The bathroom features a three-piece suite comprising a WC, hand basin, and bath. It is complemented by a beautiful tiled floor and partly tiled walls. There is also a large cupboard for additional storage. Loft access is available from this room.

BEDROOM ONE

A stunning principal bedroom with original cast iron fireplace and wooden mantle. It features dual-aspect windows, high ceilings, alcove storage, and exposed floorboards. Enjoy lovely views over the terrace garden from this spacious room.

BEDROOM THREE

A spacious double bedroom with dual-aspect windows and original listed window features. Exposed floorboards add character to this charming room.

SHOWER ROOM

This heritage-style shower room features a three-piece suite with a power shower, WC, and wash hand basin. It is beautifully tiled and features a traditional character radiator.

EXTERNAL

STUDIO/WORKSHOP

The studio/workshop is a great versatile space, suitable for a variety of uses, offering plenty of potential to suit your needs.

GARDEN

LOCAL AUTHORITY

Telford and Wrekin Council.

COUNCIL TAX BAND

Council Tax Band D.

POSSESSION AND TENURE

Freehold with vacant possession on completion.

VIEWINGS

Strictly by appointment with the selling agent.

ANTI-MONEY LAUNDERING (AML) CHECKS

We are legally obligated to undertake anti-money laundering checks on all property purchasers. Whilst we are responsible for ensuring that these checks, and any ongoing monitoring, are conducted properly; the initial checks will be handled on our behalf by a specialist company, Movebutler, who will reach out to you once your offer has been accepted. The charge for these checks is £30 (including VAT) per purchaser, which covers the necessary data collection and any manual checks or monitoring that may be required. This cost must be paid in advance, directly to Movebutler, before a memorandum of sale can be issued, and is non-refundable. We thank you for your cooperation.