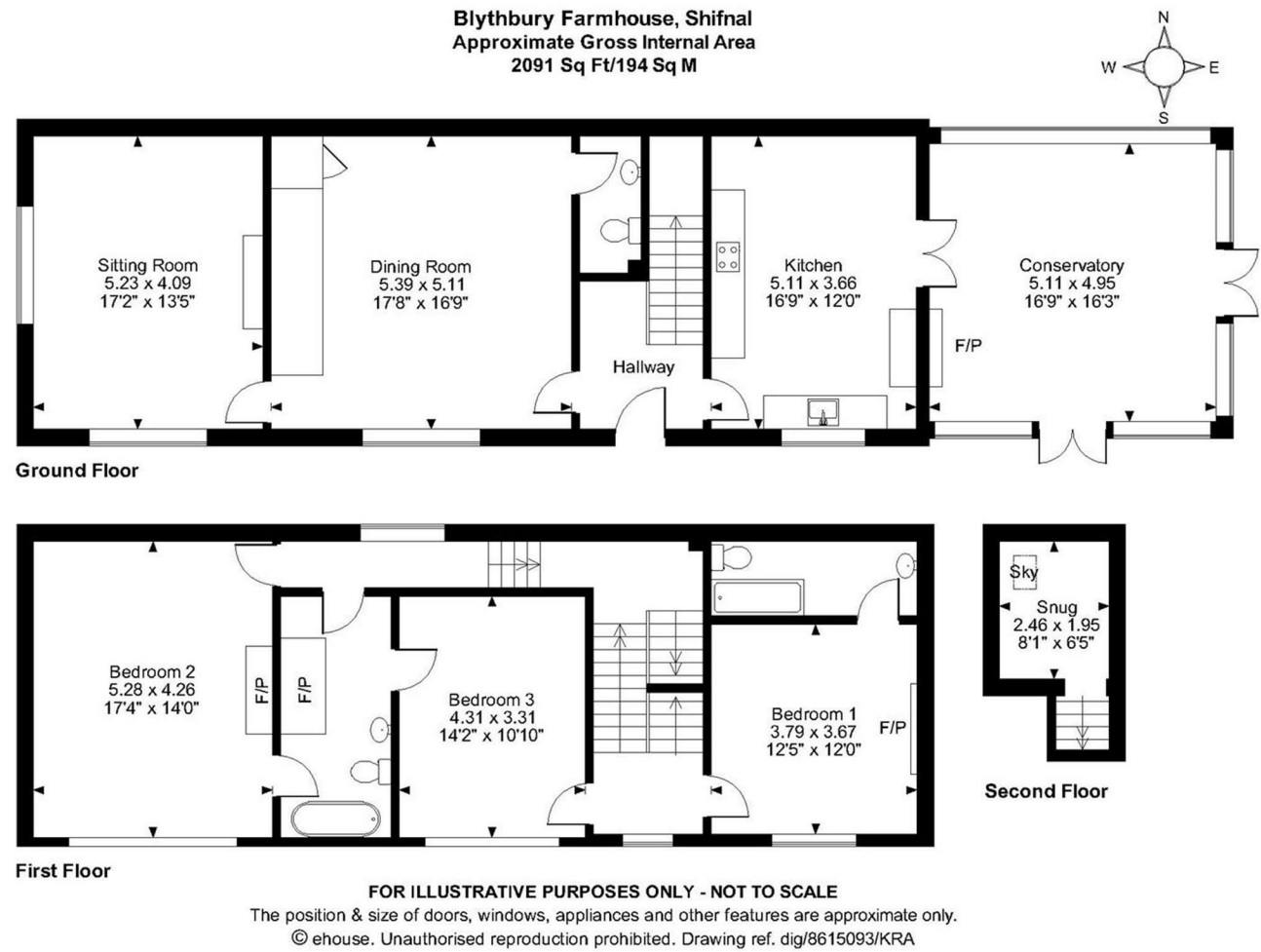


FOR SALE

Blythbury Farmhouse Shifnal, TF11 9PQ



FOR SALE

Offers in the region of £550,000

Blythbury Farmhouse Shifnal, TF11 9PQ

**Property to sell?** We would be delighted to provide you with a free no obligation market assessment of your existing property. Please contact your local Halls office to make an appointment. **Mortgage/financial advice.** We are able to recommend a completely independent financial advisor,

who is authorised and regulated by the FCA. Details can be provided upon request. **Do you require a surveyor?** We are able to recommend a completely independent chartered surveyor. Details can be provided upon request.

Energy Performance Rating



Nestled on the serene outskirts of Shifnal, Blythbury Farm House is a delightful semi-detached farmhouse that beautifully combines traditional charm with contemporary living. This spacious home is ideal for families seeking both tranquillity and convenience, offering easy access to excellent transport links.




01952 971800

**Telford Sales**  
32 Market Street, Wellington, Telford, TF1 1DT  
E: telford@halls.gb.com




IMPORTANT NOTICE. Halls Holdings Ltd and any joint agents for themselves, and for the Vendor of the property whose Agents they are, give notice that: (i) These particulars are produced in good faith, are set out as a general guide only and do not constitute any part of a contract (ii) No person in the employment of or any agent of or consultant to Halls Holdings has any authority to make or give any representation or warranty whatsoever in relation to this property (iii) Measurements, areas and distances are approximate, Floor plans and photographs are for guidance purposes only (photographs are taken with a wide angled / zoom lenses) and dimensions shapes and precise locations may differ (iv) It must not be assumed that the property has all the required planning or building regulation consents. Halls Holdings, Bowmen Way, Shrewsbury, Shropshire SY4 3DR. Registered in England 06597073.






4 Reception Room/s



3 Bedroom/s



2 Bath/Shower Room/s



- Well-Presented
- Total ft² - 1410
- Private Garden
- Close to Amenities
- Semi-Rural Property
- Excellent Transport Links

LOCATION

Blythbury Farmhouse is set on the outskirts of Shifnal, a small town with plenty of amenities like shops and restaurants, great transports links with the train station so close and bus services. The location also boasts a range of schools and sports facilities. Blythbury is also a short five minute drive away from Telford Town Centre where there is an array of different services.

DIRECTIONS

From junction six on the M54 go towards Shifnal and take exit four. When you come to the roundabout take the third exit. At the next roundabout take the second exit. In 60 yards take a right-hand turn and carry on down this lane for 0.7 miles before finding the property on your right-hand side.

GROUND FLOOR

ROOMS

HALLWAY

The hallway offers access to the upstairs.

SITTING ROOM

The sitting room offers dual aspect windows and a featured fireplace.

DINING ROOM

The spacious dining room offers the perfect space for entertaining with views to the front elevation.

KITCHEN

The beautiful fitted kitchen offers a cooker and fireplace.

CONSERVATORY

The conservatory can be accessed through the kitchen and comprises of two sets of French doors opening out to the rear garden and patio.

W.C.

The downstairs W.C. has both a toilet and hand wash basin.

FIRST FLOOR

BEDROOM ONE

A double bedroom with exposed brick details, a featured fireplace and views to the surrounding fields.

EN-SUITE

White three-piece suite comprising bath, wash-hand basin and W.C.

BEDROOM TWO

A spacious double bedroom with jack and jill bathroom serving as an en-suite.

BEDROOM THREE

A double bedroom with a jack and jill bathroom serving as an en-suite.

BATHROOM

The bathroom is equipped with toilet, hand wash basin and bath facilities.

SECOND FLOOR

SNUG

Useful versatile space currently being used as a snug.

EXTERNAL

GARDEN

A sizeable garden with patio and seating area.

LOCAL AUTHORITY

Shropshire Council.

COUNCIL TAX BAND

Council Tax Band E.

POSSESSION AND TENURE

Freehold with vacant possession on completion.

VIEWINGS

Strictly by appointment with the selling agent.

DESCRIPTION

The property features 3 well-proportioned bedrooms, including a master suite with an en-suite bathroom, while an additional Jack and Jill bathroom serves the remaining bedrooms. In addition, Blythbury Farm House boasts a cosy snug or office space, ideal for those seeking a quiet retreat or a productive home office.

The ground floor is perfect for both relaxed living and entertaining, with a generously sized dining room and a dual-aspect lounge adorned with original timber shutters, creating a warm, inviting atmosphere.

The heart of the home is the kitchen, complete with feature ceiling beams and ample space for dining. Leading from the kitchen, a bright conservatory provides a seamless connection to the outdoors, making it an ideal setting for gatherings, all while overlooking the large, well-maintained gardens. The expansive garden includes a charming summerhouse, perfect for enjoying the outdoors in style. With its blend of period features and contemporary conveniences, this property offers the perfect family home in a peaceful yet well-connected location. The property benefits from ample off-street parking, oil-fired central heating, and double glazing throughout, ensuring comfort and efficiency.

Don't miss the opportunity to make Blythbury Farm House your new home – contact us today for more information and to arrange a viewing.