



SWAKELEYS  
— ESTATES —



# Fairfield Court, Ickenham Road, Ruislip, HA4

£625,000

🛏️ 2 🚿 1 🚗 1



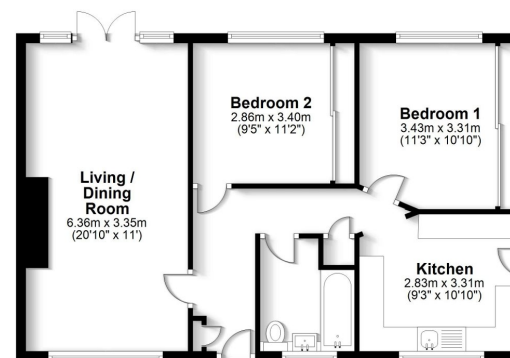


- Chain Free
- Detached Garage
- Quite Location
- Walking Distance to Shops
- Low Maintenance Garden
- Off Street Parking
- Scope to Extend STPP
- Ideal for Downsizing
- Walking Distance to West Ruislip & Ruislip Tube Stations
- Great for Walks and Trails





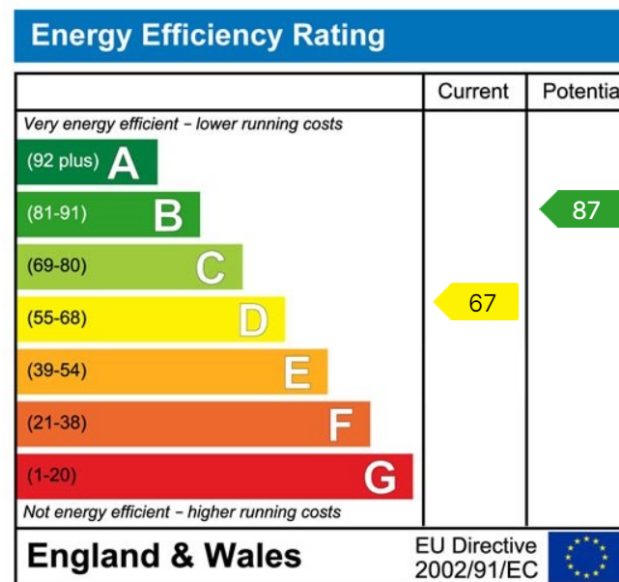
**Ground Floor**  
Approx. 83.2 sq. metres (895.7 sq. feet)



Total area: approx. 83.2 sq. metres (895.7 sq. feet)

FOR ILLUSTRATIVE PURPOSES ONLY - NOT TO SCALE  
The position and size of doors, windows, appliances and other features are approximate only. Total area includes garages and outbuildings - © My Home Property Marketing - Unauthorised reproduction prohibited.  
Plan produced using PlanUp.

A charming 2-bedroom semi-detached bungalow sat in a private road within Ruislip, offering convenience and comfort in equal measure. This delightful home is in great condition, featuring modern interiors and a well-maintained exterior. Situated just a short stroll from local shops and excellent transport links, it provides the perfect blend of suburban tranquillity and urban accessibility. Ideal for those seeking a cosy and well-located residence, this property is ready to welcome its new owners.



01895 470186

info@swakeleysstates.co.uk

33 Copthall Road East, Ickenham, UB10 8SD

swakeleysstates.co.uk

Agents Notes: All measurements are approximate and quoted in metric with imperial equivalents and for general guidance only and whilst every attempt has been made to ensure accuracy, they must not be relied on. The fixtures, fittings and appliances referred to have not been tested and therefore no guarantee can be given that they are in working order. Internal photographs are reproduced for general information and it must not be inferred that any item shown is included with the property. For a free valuation, contact the numbers listed on the brochure