



4 Bedrooms | 1 Bathrooms | 1 Reception Rooms

Somerton Close | Purley | CR8 4BA

Offers over £550,000

LOFT

Somerton Close | Purley | CR8 4BA Offers over £550,000

- Spacious semi-detached home presented beautifully throughout
- Large reception room with plenty of space for the whole family
- Modern kitchen with space for dining too
- Bonus utility room and downstairs WC
- Great size bedrooms upstairs, all with fitted cupboards
- Luxurious bathroom with separate walk-in shower and corner bath
- Private driveway and vast garden
- Tucked away from the hustle and bustle but great bus links and schools close by

Ground Floor

Entrance Hall

Downstairs WC

Reception Room

19'4 x 12'9 (5.89m x 3.89m)

Utility Room

11'6 x 10'7 (3.51m x 3.23m)

Kitchen

16'11 x 11'10 (5.16m x 3.61m)

First Floor

Landing

Bedroom

12'9 x 11'2 (3.89m x 3.40m)

Bedroom

12'10 x 9'9 (3.91m x 2.97m)

Bedroom

11'11 x 9'2 (3.63m x 2.79m)

Bedroom

11'11 x 7'1 (3.63m x 2.16m)

Bathroom

Outside

Driveway

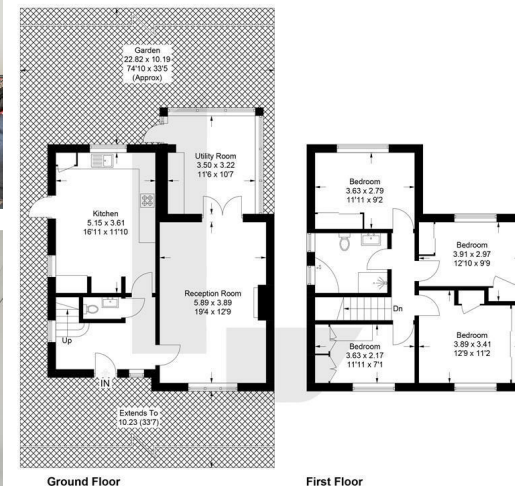
Rear Garden

74'10 x 33'5 (22.81m x 10.19m)



Somerton Close, CR8

Approximate Gross Internal Area = 121.6 sq m / 1309 sq ft



This plan is for layout guidance only. Not drawn to scale unless stated. Windows and door openings are approximate. Whilst every care is taken in the preparation of this plan, please check all dimensions, shapes and compass bearings before making any decisions reliant upon them. (D1264474)



EPC Rating: D



23a High Street
Purley
Surrey
CR8 2AF
0208 660 8070
hello@loft-estates.co.uk