



2 Bedrooms | 1 Bathrooms | 1 Reception Rooms

French Apartments | Lansdowne Road | Purley | CR8 2PJ

**£290,000**

**LOFT**



# French Apartments | Lansdowne Road | Purley | CR8 2PJ £290,000

- Beautifully presented apartment in sought after block
- Allocated parking and pretty communal gardens
- Updated by the current owners with new boiler, hob/cooker and double glazed windows
- Vast reception room with plenty of space for lounging and dining
- Two double bedrooms and tiled bathroom
- Town centre location, minutes walk from Purley station
- Ideal first time buy or investment
- Residents' Pavillion and recently renovated communal Gym

## First Floor

## Hallway

## Reception Room

20'1 x 11'3 (6.12m x 3.43m)

## Kitchen

8'3 x 7'7 (2.51m x 2.31m)

## Bedroom

10'3 x 10'1 (3.12m x 3.07m)

## Bedroom

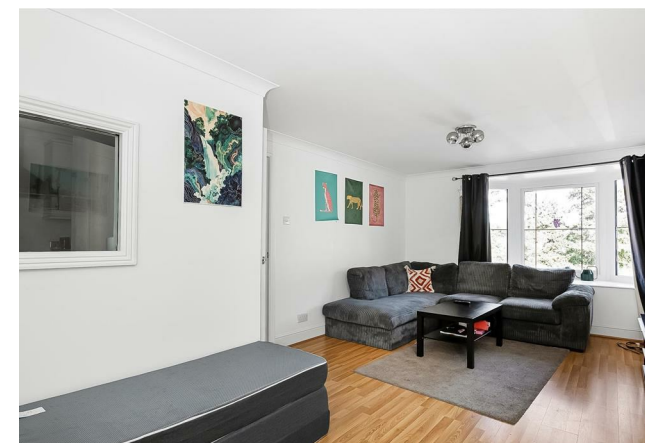
8'9 x 7'9 (2.67m x 2.36m)

## Bathroom

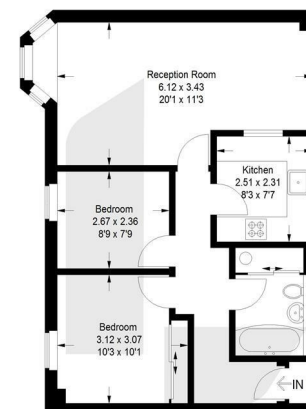
## Outside

## Allocated Parking

## Communal Gardens



**French Apartments, CR8**  
Approximate Gross Internal Area  
56.6 sq m / 609 sq ft



## First Floor

This plan is for layout guidance only. Not drawn to scale unless stated. Windows and door openings are approximate. Whilst every care is taken in the preparation of this plan, please check all dimensions, shapes and compass bearings before making any decisions reliant upon them. (ID1245789)



EPC Rating: D



23a High Street  
Purley  
Surrey  
CR8 2AF  
0208 660 8070  
hello@loft-estates.co.uk