



2 Bedrooms | 1 Bathrooms | 1 Reception Rooms

Russell Hill | Purley | CR8 2JA

**£415,000**

**LOFT**

34 Russell Hill | Purley | CR8 2JA  
£415,000

- Ground floor converted apartment with private rear garden and pretty communal gardens
- Full of character throughout including high ceilings and wooden floors
- Allocated parking and bonus storage in the basement
- Beautifully presented throughout with modern kitchen
- Vast reception room with plenty of space for lounging and dining
- Two double bedrooms, stylish bathroom with underfloor heating and separate plumbed laundry cupboard
- Intimate block with only four apartments
- Ideally situated a short walk from Purley town centre and train station



A unique apartment  
with over 1,200 sq.  
ft. of  
accommodation,  
with a private  
garden, basement  
storage, allocated  
parking and stones  
throw from the  
town centre!



## **Raised Ground Floor**

### **Reception Room**

22'6 x 19'7 (6.86m x 5.97m)

### **Kitchen**

14'6 x 8'1 (4.42m x 2.46m)

### **Bedroom**

14'1 x 11'2 (4.29m x 3.40m)

### **Bathroom**

### **Bedroom**

13'3 x 9'5 (4.04m x 2.87m)

## **Basement**

### **Basement Room**

15'0 x 14'9 (4.57m x 4.50m)

## **Outside**

### **Private Garden**

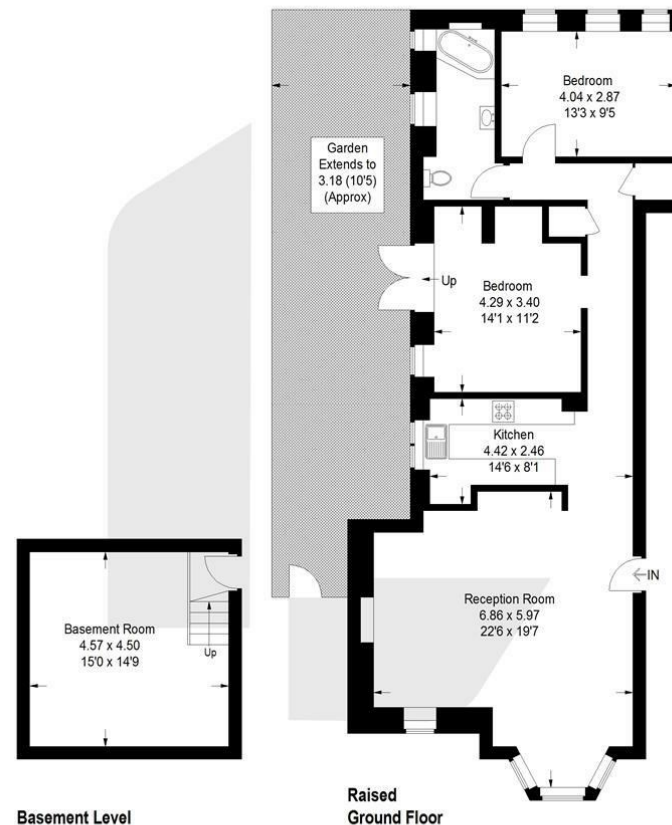
### **Communal Garden**

### **Allocated Parking**



## Russell Hill, CR8

Approximate Gross Internal Area  
113.6 sq m / 1223 sq ft



This plan is for layout guidance only. Not drawn to scale unless stated. Windows and door openings are approximate. Whilst every care is taken in the preparation of this plan, please check all dimensions, shapes and compass bearings before making any decisions reliant upon them. (ID:1244945)

EPC Rating: D

23a High Street  
Purley  
Surrey  
CR8 2AF  
0208 660 8070  
hello@loft-estates.co.uk