



2 Bedrooms | 2 Bathrooms | 1 Reception Room

Whitestone Way | Croydon | CR0 4WL

**£1,750 Per month PCM**

LOFT



# Whitestone Way | Croydon | CR0 4WL £1,750 Per month

- Luxury seventh floor apartment with private balcony offering stunning views
- On site concierge, intercom throughout and lift serviced
- Open-plan kitchen/reception room with large glass doors, allowing the light to flood through
- Large hallway with plenty of storage
- Two double bedrooms with en-suite to bedroom one
- Great condition and ready to move into
- Ideally located for transport links with the tram minutes away with great links to Croydon and Wimbledon

## Seventh Floor

### Hallway

### Reception Room/Kitchen

19'3 x 15'3 (5.87m x 4.65m)

### Bedroom 1

15'0 x 8'0 (4.57m x 2.44m)

### En-suite

### Bedroom 2

15'0 x 11'7 (4.57m x 3.53m)

### Bathroom

### Outside

### Balcony

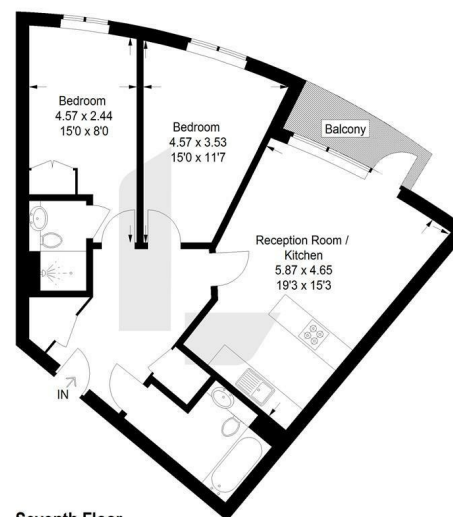
### Allocated Parking Space

### Communal Gardens



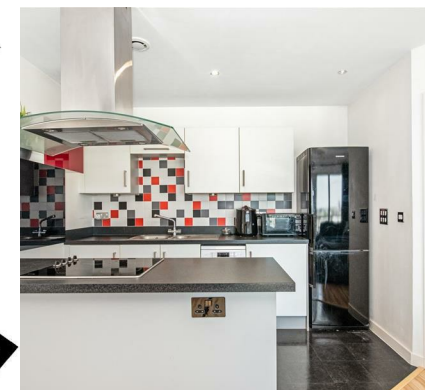
## Peebles Court, CR0

Approximate Gross Internal Area  
63.8 sq m / 687 sq ft



## Seventh Floor

This plan is for layout guidance only. Not drawn to scale unless stated. Windows and door openings are approximate. Whilst every care is taken in the preparation of this plan, please check all dimensions, shapes and compass bearings before making any decisions reliant upon them. (ID1196346)



EPC Rating: C

23a High Street  
Purley  
Surrey  
CR8 2AF  
0208 660 8070  
hello@loft-estates.co.uk