



2 Bedrooms | 1 Bathrooms | 1 Reception Rooms

Sanderstead Road | South Croydon | CR2 0PF

**£1,600 PCM**

**LOFT**



Sanderstead Road |  
South Croydon | CR2 0PF  
£1,600

- Spacious first floor maisonette with parking to the rear
- Great size rooms throughout with bright reception room
- Separate kitchen with plenty of space for all appliances
- Well-presented bathroom with full size bath
- Two double bedrooms with fitted cupboard to bedroom 2
- Ideally situated for transport links with South Croydon train station and bus links minutes walk away
- Ready to move straight into and unfurnished

## Ground Floor

### Private Entrance and Staircase

### Landing

### Reception Room

14'8 x 14'1 (4.47m x 4.29m)

### Kitchen

12'7 x 11'9 (3.84m x 3.58m)

### Bedroom 1

11'9 x 11'8 (3.58m x 3.56m)

### Bedroom 2

11'1 x 8'5 (3.38m x 2.57m)

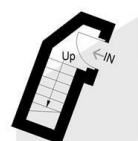
### Bathroom

### Parking to Rear

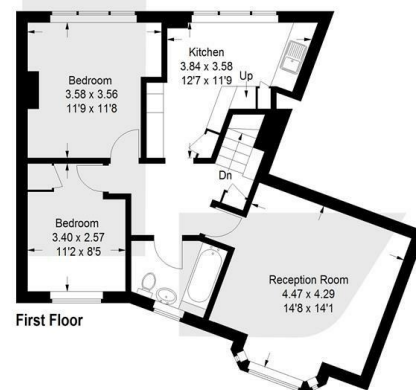


## Sanderstead Road, CR2

Approximate Gross Internal Area  
66.5 sq m / 716 sq ft

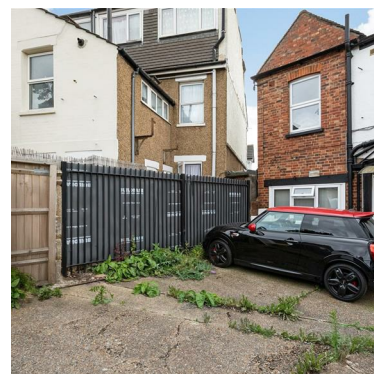
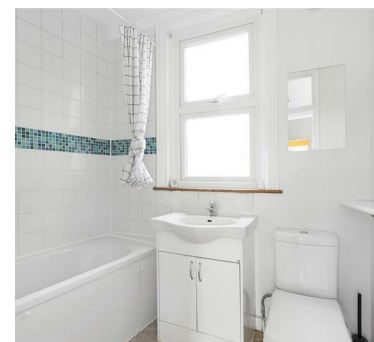


Ground Floor



First Floor

This plan is for layout guidance only. Not drawn to scale unless stated. Windows and door openings are approximate. Whilst every care is taken in the preparation of this plan, please check all dimensions, shapes and compass bearings before making any decisions reliant upon them. (ID1228620)



EPC Rating: D

23a High Street  
Purley  
Surrey  
CR8 2AF  
0208 660 8070  
hello@loft-estates.co.uk