



Croydon Road | | Caterham | CR3 6PJ

£1,950 Per month

LOFT

Croydon Road |
Caterham | CR3 6PJ
£1,950 Per month

- Great location, situated within walking distance to Caterham and Whyteleafe South train station
- 2/3 Double bedrooms plus bonus study room
- Modern kitchen with direct access to garden space
- Off street parking
- Fantastic storage
- Unfurnished



Walking
distance to
Caterham
town
centre



Ground Floor

Hallway

Bathroom

Reception Room

13'2 x 12'1 (3.96m; 0.61m x 3.68m)

Lower Ground Floor

Kitchen

15'0 x 13'1 (4.57m x 3.99m)

Bedroom/ Study

12'8 x 11'2 (3.86m x 3.40m)

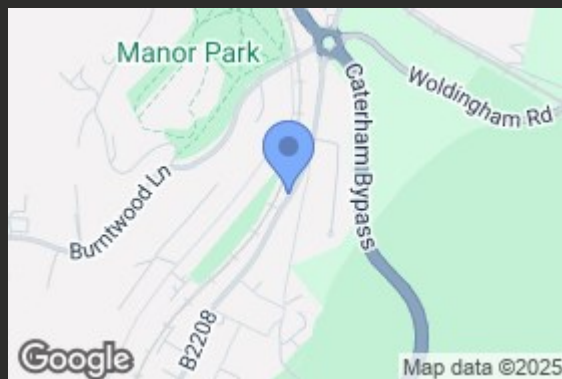
First Floor

Bedroom 1

13'3 x 9'8 (4.04m x 2.95m)

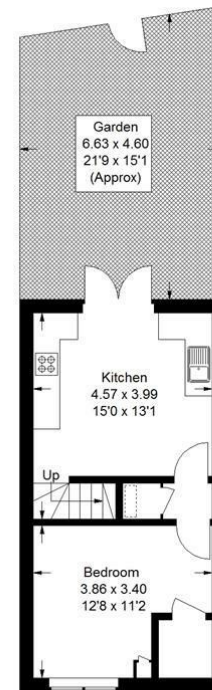
Bedroom 2

12'6 x 8'3 (3.81m x 2.51m)



Croydon Road, CR3

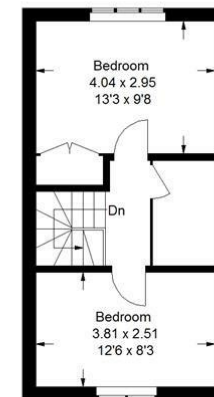
Approximate Gross Internal Area
96.3 sq m / 1037 sq ft



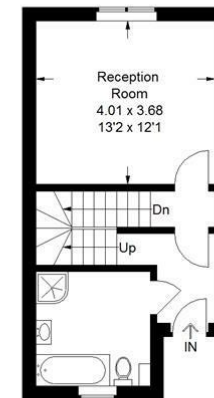
Basement

= Reduced headroom below 1.5 m / 5'0

This plan is for layout guidance only. Not drawn to scale unless stated. Windows and door openings are approximate. Whilst every care is taken in the preparation of this plan, please check all dimensions, shapes and compass bearings before making any decisions reliant upon them. (ID1094315)



First Floor



Ground Floor

EPC Rating: D

23a High Street
Purley
Surrey
CR8 2AF
0208 660 8070
hello@loft-estates.co.uk