



2 Bedrooms | 2 Bathrooms | 1 Reception Room

Whitestone Way | Croydon | CR0 4WL

£1,900 Per month PCM

LOFT

Whitestone Way | Croydon | CR0 4WL £1,900 Per month

- Luxury seventh floor apartment with private balcony offering stunning views
- On site concierge, intercom throughout and lift serviced
- Open-plan kitchen/reception room with large glass doors, allowing the light to flood through
- Large hallway with plenty of storage
- Two double bedrooms with en-suite to bedroom one
- Great condition and ready to move into
- Ideally located for transport links with the tram minutes away with great links to Croydon and Wimbledon

Seventh Floor

Hallway

Reception Room/Kitchen

19'3" x 15'3" (5.87m x 4.65m)

Bedroom 1

15'0" x 8'0" (4.57m x 2.44m)

En-suite

Bedroom 2

15'0" x 11'7" (4.57m x 3.53m)

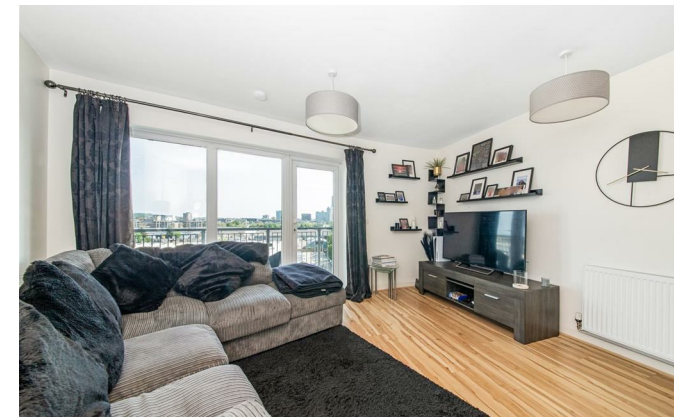
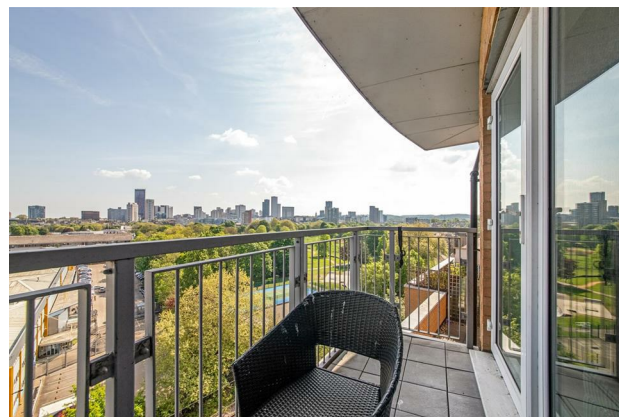
Bathroom

Outside

Balcony

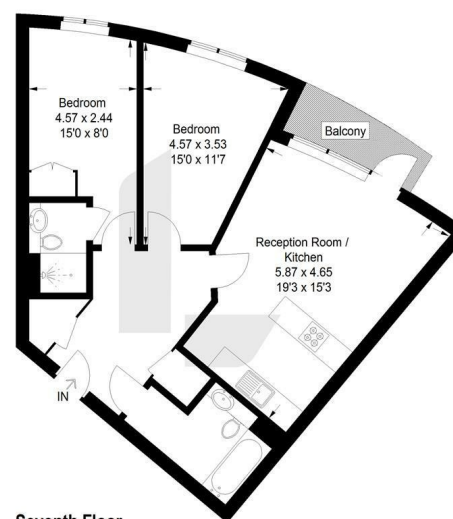
Allocated Parking Space

Communal Gardens



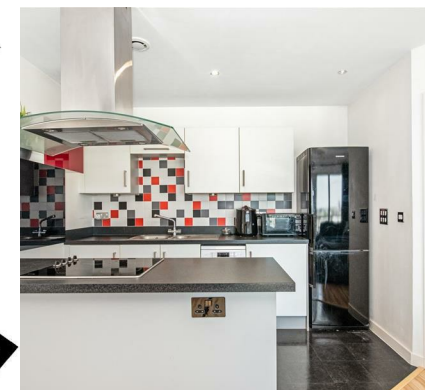
Peebles Court, CR0

Approximate Gross Internal Area
63.8 sq m / 687 sq ft



Seventh Floor

This plan is for layout guidance only. Not drawn to scale unless stated. Windows and door openings are approximate. Whilst every care is taken in the preparation of this plan, please check all dimensions, shapes and compass bearings before making any decisions reliant upon them. (ID1196346)



EPC Rating: C

23a High Street
Purley
Surrey
CR8 2AF
0208 660 8070
hello@loft-estates.co.uk