



1 Bedroom | 1 Bathroom | 1 Reception Room

Astoria Court | 116 High Street | Purley | CR8 2XT

**Guide price £250,000**

LOFT



Astoria Court | 116 High Street |  
Purley | CR8 2XT  
Guide price £250,000

- Chain Free ground floor apartment with large balcony
- Underground allocated parking space
- Coveted location in the sought after block, offering beautiful views over the pretty communal gardens
- Large reception room with plenty of space for lounging and dining
- Good size kitchen with fitted appliances
- Modern bathroom with shower and bathroom
- Ideally located on Purley high street with the station and amenities on your doorstep

## Ground Floor

### Hallway

### Reception Room

20'9 x 10'0 (6.32m x 3.05m)

### Kitchen

13'5 x 6'6 (4.09m x 1.98m)

### Bathroom

### Bedroom

12'2 x 12'1 (3.71m x 3.68m)

### Outside

### Balcony/Terrace

### Allocated Underground Parking Space

### Communal Gardens



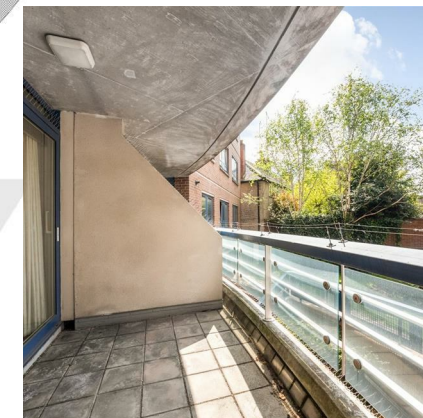
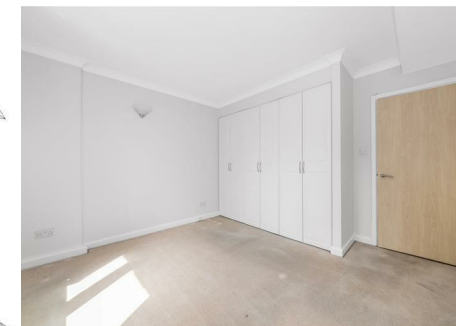
## Astoria Court, CR8

Approximate Gross Internal Area  
51.3 sq m / 552 sq ft



### Ground Floor

This plan is for layout guidance only. Not drawn to scale unless stated. Windows and door openings are approximate. Whilst every care is taken in the preparation of this plan, please check all dimensions, shapes and compass bearings before making any decisions reliant upon them. (ID: 1196550)



EPC Rating: C

23a High Street  
Purley  
Surrey  
CR8 2AF

0208 660 8070

hello@loft-estates.co.uk