



2 Bedrooms | 1 Bathroom | 1 Reception Room

57 Whytecliffe Road South | Purley | CR8 2FG

Guide price £350,000

LOFT

57 Whytecliffe Road South | Purley
| CR8 2FG
Guide price £350,000

A well presented ground floor apartment with allocated parking and a private rear garden, just a stones throw from the train station and all the shops and amenities! The flat itself is a great size, with two double bedrooms and a large open plan living and dining room. The kitchen is a great space, separated completely from the lounge, with direct access to the level garden space. The garden is paved and offers space for entertaining and storage. Modern throughout and ready to move into! Offered on Shared Ownership, opportunity to purchase 50% share.

Offered on Shared Ownership, opportunity to

purchase 50% share

- Open plan living and dining room
- Large windows throughout and great storage
- Separate kitchen with fitted appliances
- Town centre location with Purley Station and all the amenities within walking distance



If you are looking for location and space, look no further! Great size rooms throughout, private garden and a stones throw from the Station. Offered on Shared Ownership too!



Ground Floor

Hallway

Reception Room

20'4 x 12'3 (6.20m x 3.73m)

Kitchen

10'5 x 8'6 (3.18m x 2.59m)

Bathroom

Bedroom 1

16'1 x 10'5 (4.90m x 3.18m)

Bedroom 2

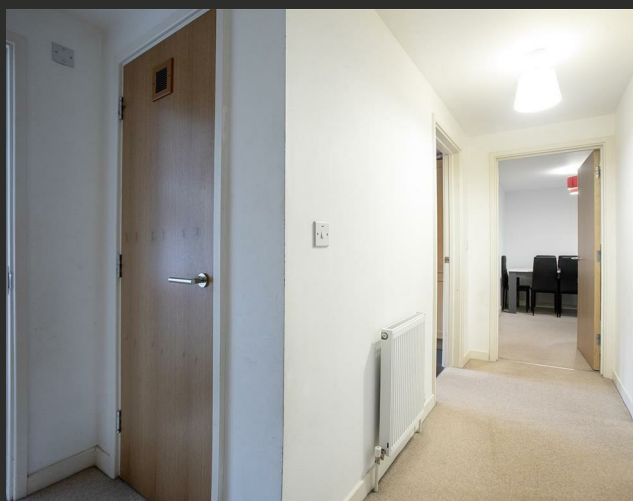
16'1 x 7'8 (4.90m x 2.34m)

Outside

Private Garden

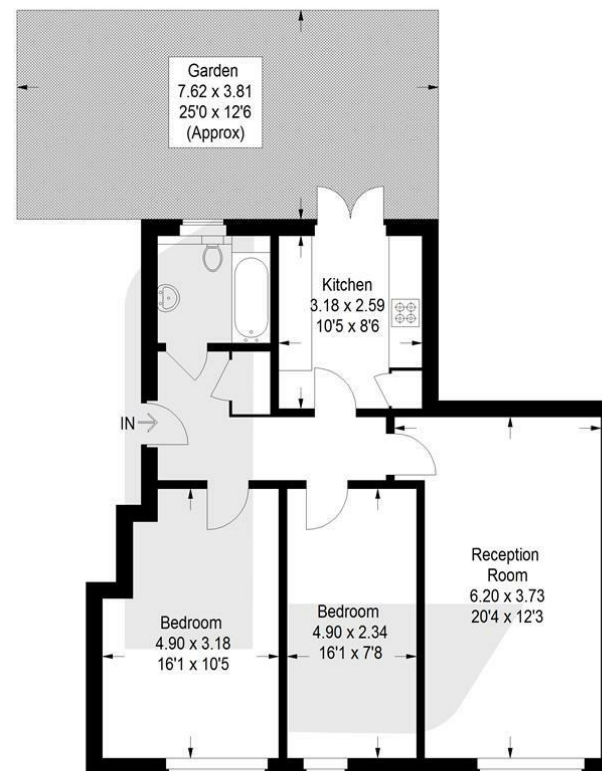
25'0 x 12'6 (7.62m x 3.81m)

Allocated Parking Space



Whytecliffe Road, CR8

Approximate Gross Internal Area
69.7 sq m / 750 sq ft



Ground Floor

This plan is for layout guidance only. Not drawn to scale unless stated. Windows and door openings are approximate. Whilst every care is taken in the preparation of this plan, please check all dimensions, shapes and compass bearings before making any decisions reliant upon them. (ID1165437)

EPC Rating: B

23a High Street
Purley
Surrey
CR8 2AF
0208 660 8070
hello@loft-estates.co.uk