



1 Bedroom | 1 Bathroom | 1 Reception Room

43 St. Peters Road | Croydon | CR0 1HP

£250,000

LOFT

43 St. Peters Road |
Croydon | CR0 1HP
£250,000

- Top floor apartment in a period conversion with allocated parking
- Well presented communal areas with original features and stunning staircase
- Flooded with character throughout including sash windows and high ceilings
- Access to loft space for extra storage
- 4 minutes walk (0.2 miles) to South Croydon train station
- A great investment or first time buy, ready to move into

Third Floor

Entrance Hall

Bedroom
15'8 x 10'1 (4.78m x 3.07m)

Bathroom

Reception Room
15'9 x 14'4 (4.80m x 4.37m)

Kitchen
6'6 x 6'5 (1.98m x 1.96m)

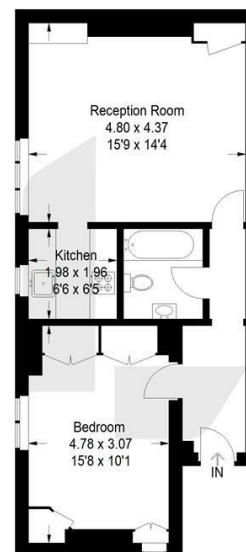
Outside

Allocated Parking



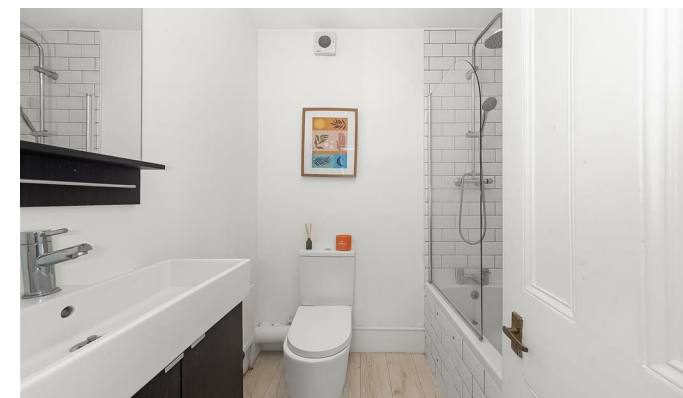
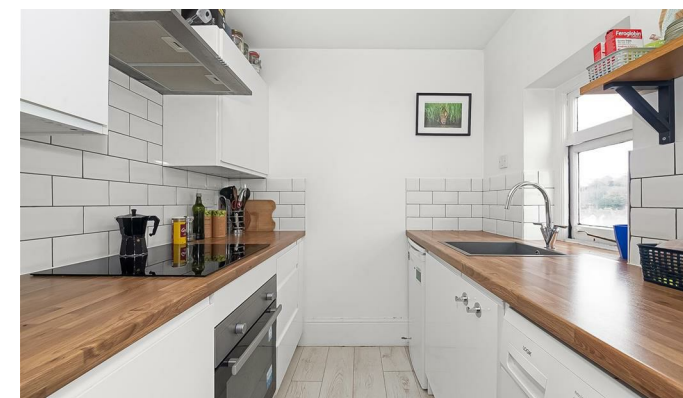
St. Peters Road, CR0

Approximate Gross Internal Area
52.0 sq m / 560 sq ft



Third Floor

This plan is for layout guidance only. Not drawn to scale unless stated. Windows and door openings are approximate. Whilst every care is taken in the preparation of this plan, please check all dimensions, shapes and compass bearings before making any decisions reliant upon them. (ID1157307)



EPC Rating: E

23a High Street

Purley

Surrey

CR8 2AF

0208 660 8070

hello@loft-estates.co.uk