



2 Bedrooms | 2 Bathrooms | 1 Reception Rooms

Croham Road | South Croydon | CR2 7BA

£297,500

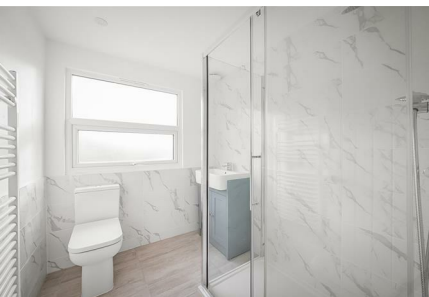
LOFT

Croham Road | South Croydon |
CR2 7BA
£297,500

- Split level maisonette with accommodation across three floors
- Recently renovated throughout
- Two bathrooms and a separate utility room that could be converted into an office
- Open plan kitchen/living space with large bay windows
- Both bedrooms are doubles with one spanning the whole second floor with an en-suite
- Ideally located for South Croydon station opposite
- Shops and bus links within walking distance



A split level
maisonette that
feels like a house!
The perfect first
time buy or family
home, ready to
move into and
amenities on your
doorstep.



Ground Floor

Entrance Hall

First Floor

Landing

Kitchen/Living Area

15'7 x 13'7 (4.75m x 4.14m)

Bedroom

12'8 x 9'0 (3.86m x 2.74m)

Bathroom

Utility

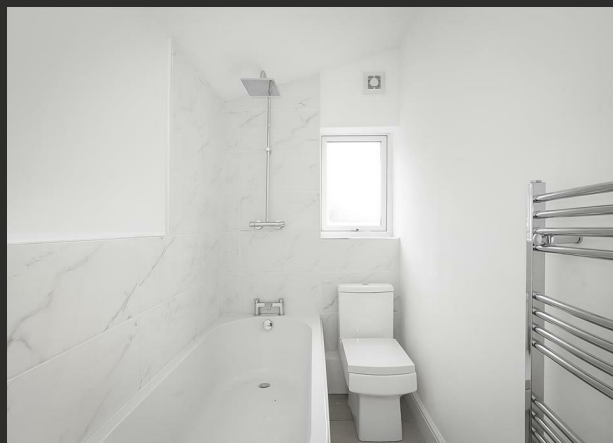
10'0 x 5'6 (3.05m x 1.68m)

Second Floor

Bedroom


19'8 x 15'6 (5.99m x 4.72m)

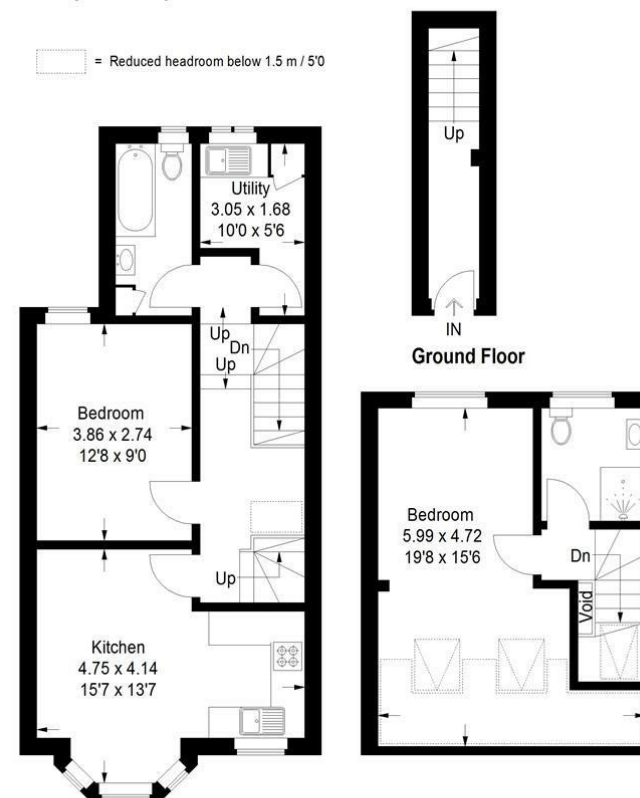
En-suite



Croham Road, CR2

Approximate Gross Internal Area
(Excluding Void)
79.8 sq m / 859 sq ft

 = Reduced headroom below 1.5 m / 5'0"



First Floor

Second Floor

This plan is for layout guidance only. Not drawn to scale unless stated. Windows and door openings are approximate. Whilst every care is taken in the preparation of this plan, please check all dimensions, shapes and compass bearings before making any decisions reliant upon them. (ID1148524)

EPC Rating: C

23a High Street
Purley
Surrey
CR8 2AF
0208 660 8070
hello@loft-estates.co.uk