



1 Bedroom | 1 Bathroom | 1 Reception Room

Centrillion Point, 2 Masons Avenue | Croydon | CR0 9WY

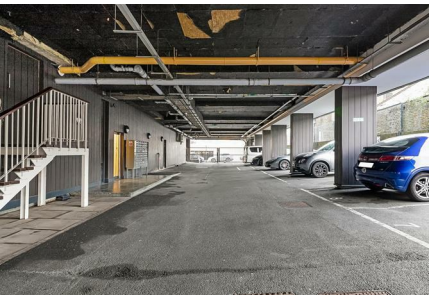
£235,000

LOFT

Centrillion Point, 2 Masons Avenue
| Croydon | CR0 9WY
£235,000

- Eleventh floor apartment with panoramic views across Croydon
- Luxury block with lift access and underground, allocated parking
- Open plan kitchen living space with floor to ceiling windows
- Large double bedroom with fitted wardrobes
- Ideally located in Croydon town centre
- East and South Croydon train stations within walking distance
- Chain free





Eleventh Floor

Hallway

Reception Room

19'3" x 12'0" (5.89 x 3.66)

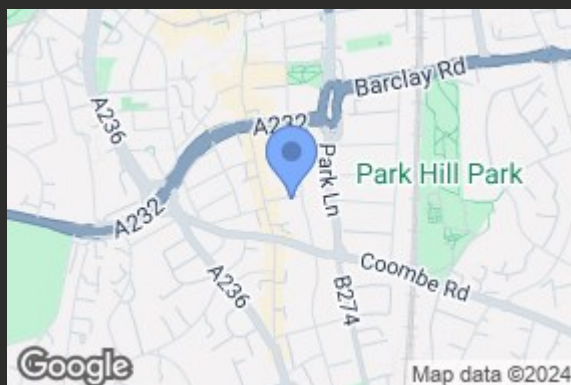
Bedroom

18'11" x 9'3" (5.79 x 2.82)

Bathroom

Outside

Underground Allocated Parking Space



Centrillion point CR0

Approximate Gross Internal Area
47.5 sq m / 511 sq ft



Eleventh Floor

This plan is for layout guidance only. Not drawn to scale unless stated. Windows and door openings are approximate. Whilst every care is taken in the preparation of this plan, please check all dimensions, shapes and compass bearings before making any decisions reliant upon them. (ID1146143)

EPC Rating: B

23a High Street
Purley
Surrey
CR8 2AF
0208 660 8070
hello@loft-estates.co.uk
<https://www.loft-estates.co.uk>
Instagram: loft.estateagents
Facebook: LOFT Estate Agents