



3 Bedrooms | 1 Bathrooms | 2 Reception Rooms

Biddulph Road | South Croydon | CR2 6QA

Guide price £485,000

LOFT

Biddulph Road | South Croydon |
CR2 6QA
Guide price £485,000

- Victorian mid-terrace home, beautifully extended and updated throughout
- Meticulously designed, with a stylish open plan kitchen/dining space with bi-fold doors and built in blinds
- Attention to detail in every room including skylights added in the kitchen space, allowing light to flow through
- Sleek kitchen with pantry, Quooker tap, Elica vented hob, under counter lights and appliances only 2 years old
- Tastefully modernised yet retaining character and charm in every room
- Mature, level rear garden and newly constructed shed with power
- Ideally situated for shops and transport with two stations with walking distance



A traditional Victorian cottage that has tastefully modernised throughout to a high quality. Ready to move into and perfectly situated for a great first time buy or family home.



Ground Floor

Hallway

Reception Room

15'0 x 11'8 (4.57m x 3.56m)

Kitchen/Dining Room

20'4 x 16'3 (6.20m x 4.95m)

Pantry

First Floor

Landing

Bedroom 1

12'6 x 11'8 (3.81m x 3.56m)

Bedroom 2

12'6 x 11'8 (3.81m x 3.56m)

Bedroom 3

8'5 x 5'1 (2.57m x 1.55m)

Bathroom

Outside

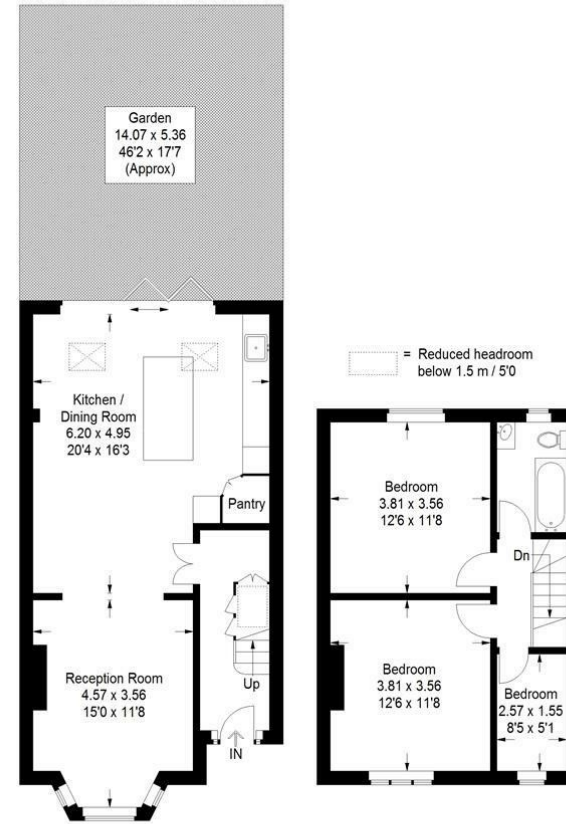
Front Garden

Rear Garden



Biddulph Road, CR2

Approximate Gross Internal Area
94.8 sq m / 1020 sq ft



Ground Floor

First Floor

This plan is for layout guidance only. Not drawn to scale unless stated. Windows and door openings are approximate. Whilst every care is taken in the preparation of this plan, please check all dimensions, shapes and compass bearings before making any decisions reliant upon them. (ID1136574)

EPC Rating:

23a High Street
Purley
Surrey
CR8 2AF
0208 660 8070
hello@loft-
estates.co.uk