



2 Bedrooms | 1 Bathroom | 1 Reception Room

Partridge Knoll | Purley | CR8 1BS

£290,000

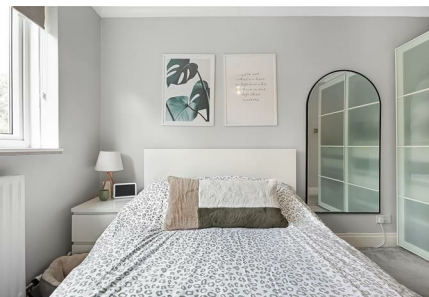
LOFT

Partridge Knoll | Purley | CR8 1BS
£290,000

- Stunning first floor purpose built apartment
- Recently modernised throughout with a spacious kitchen/diner featuring an island
- Great size lounge with space for home working
- Bright rooms throughout with large windows letting light flow through
- Both double bedrooms and hallway storage cupboard
- A short walk away from Purley train station and town centre



If you are looking for a spacious apartment that you can move straight into, look no further! Spanning over 750 sq. ft., this home features everything a first time buyer, down-sizer or small family needs. Perfect location for getting into town or walking to the station. All you need to do is unpack your bags!



First Floor

Hallway

Bedroom 2

12'2 x 7'7 (3.71m x 2.31m)

Bedroom 1

12'2 x 8'3 (3.71m x 2.51m)

Bathroom

Lounge

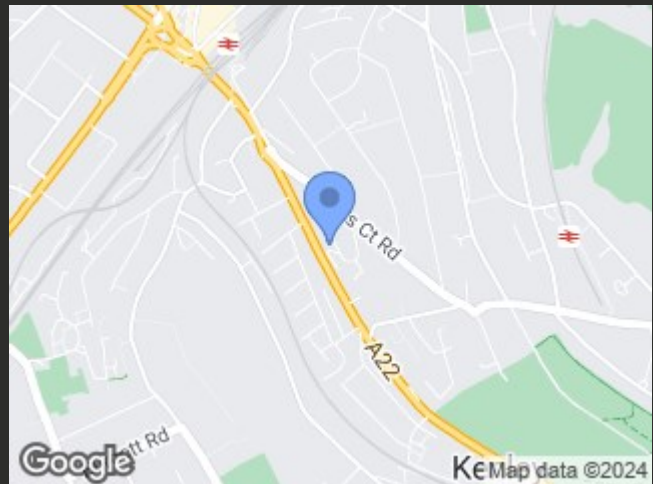
16'3 x 12'2 (4.95m x 3.71m)

Kitchen/Dining Room

16'3 x 12'2 (4.95m x 3.71m)

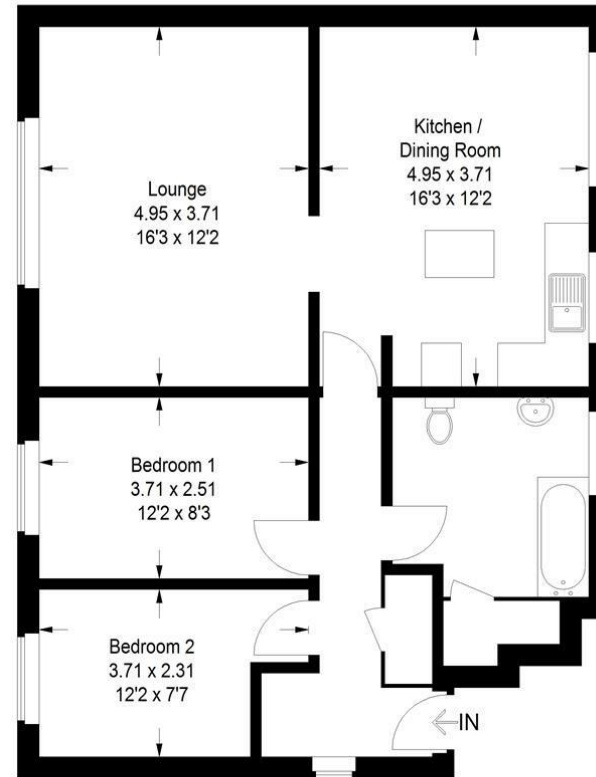
Outside

Communal Parking



Partridge knoll, CR8

Approximate Gross Internal Area
69.9 sq m / 752 sq ft



This plan is for layout guidance only. Not drawn to scale unless stated.
Windows and door openings are approximate. Whilst every care is taken
in the preparation of this plan, please check all dimensions, shapes and
compass bearings before making any decisions reliant upon them. (ID1120339)

EPC Rating: C

23a High Street
Purley
Surrey
CR8 2AF
0208 660 8070
hello@loft-estates.co.uk