



6 Corte Jago Bassett Walk

Truro, Truro

Deceptively spacious townhouse located in central Truro City. Features covered off-road parking, open-plan living/dining/kitchen, elevated timber decked garden, 4 bedrooms, 1 Bathroom and an en suite shower room, bathroom. Prime location. Ideal, mature family home or rental investment.

Council Tax band: D

Tenure: Freehold

EPC Energy Efficiency Rating: C

EPC Environmental Impact Rating: G

- Modern Townhouse Style Home
- Four Bedrooms
- Family Bathroom plus Ensuite Shower Room To Master Bedroom
- Covered Parking
- Family Living Area/Kitchen
- Utility Room/WC
- Double Glazing and Gas Central Heating
- Excellent City Centre Location





Entrance Hall

With a turning staircase to the first floor, door to a tall cupboard housing electric consumer unit, door to the utility room, radiator and thermostat.

Utility Room/wc

With a double glazed window to the front, with matching units, eye level and base with worksurface incorporating a circular stainless steel sink unit and mixer tap, undercounter space for washing machine and tumble dryer, eye level cupboard concealing Glow Warm gas combination boiler.

Kitchen Area

10' 4" x 9' 2" (3.14m x 2.80m)

This is again a well fitted area, with matching eye level and base units, incorporating a fridge/freezer, dish washer, fitted AEG electric oven, 4 ring electric hob over and cooker hood. drawer unit.

Living/dining area

14' 9" x 12' 8" (4.50m x 3.86m)

This room is deceptively spacious, open from the kitchen area and with bi-fold doors opening onto the rear elevated deck/garden area which has far reaching views overlooking Truro City. Door to a deep walk in storage cupboard also.





Landing

With access to Bedrooms 3, 4 and Bathroom. Radiator.

Bedroom 3

12' 6" x 10' 1" (3.80m x 3.07m)

With two windows to the rear giving far reaching views.

Family Bathroom

7' 1" x 5' 7" (2.15m x 1.70m)

A spacious family bathroom with a large wall fitted mirror, a suite comprising a panelled bath with electric Mira shower and glazed screen. Pedestal wash hand basin and a low level wc.

Bedroom 4

12' 8" x 9' 1" (3.85m x 2.78m)

With a large double glazed unit to the front, large fitted wardrobe with sliding doors, hanging rail and shelf.





Second Floor Landing

Radiator and access to Bedroom 1 and 2.

Bedroom 2

12' 7" x 10' 0" (3.83m x 3.05m)

Located to the rear of the Second floor, this room affords far reaching views over Truro. Radiator.

Master Bedroom

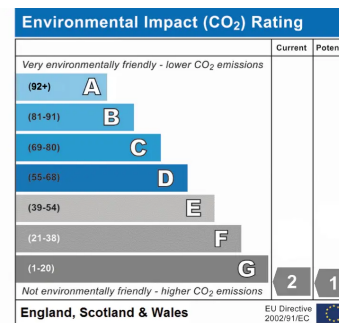
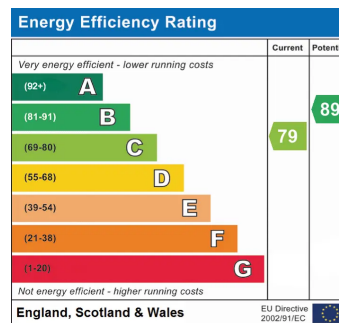
12' 4" x 10' 8" (3.75m x 3.25m)

With double glazed windows to the front full length build in wardrobe with sliding doors and shelving. Radiator and door to;

En Suite Shower Room

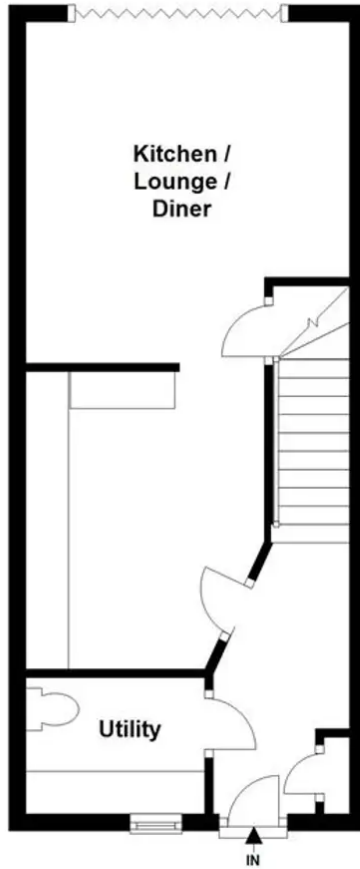
7' 10" x 5' 9" (2.38m x 1.75m)

Another spacious room with a double shower cubicle, mixer shower and glazed screen, a chrome ladder radiator, wc, pedestal wash hand basin and shaver point.



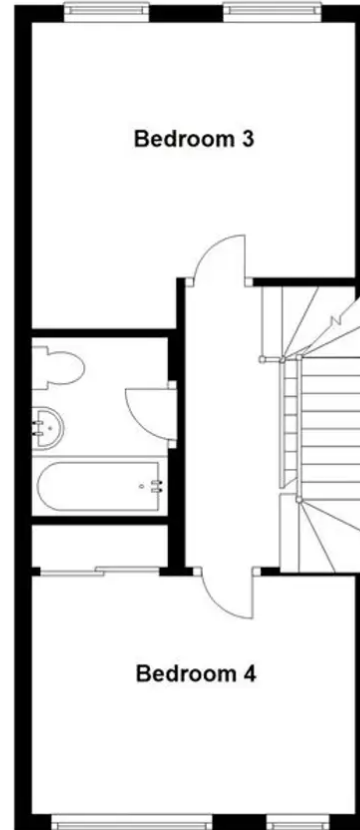
Ground Floor

Approx. 35.4 sq. metres



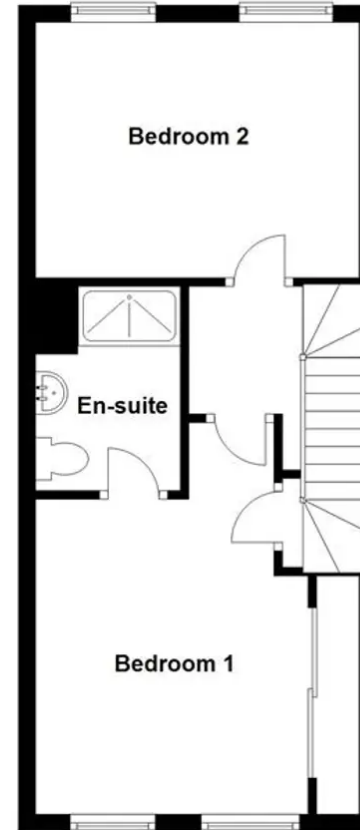
First Floor

Approx. 35.0 sq. metres



Second Floor

Approx. 35.5 sq. metres



Total area: approx. 105.9 sq. metres

Floor plans are provided for guidance only and should not be relied upon for measurements for furniture or similar.
Plan produced using PlanUp.