



OAKFIELD



Boltro Road, Haywards Heath, RH16 1AS

£1,450 Per Calendar Month





## Boltro Road, Haywards Heath, RH16 1AS

Located in the popular Boltro Road area of Haywards Heath is Heath Square where this two bedroom second floor apartment is situated.

When entering the property you are welcomed into the spacious hallway leading to the open plan living space offering a modern kitchen with electric oven and hob as well as integrated fridge/freezer, washing machine and slimline dishwasher. The apartment offers two double bedrooms, the master bedroom benefits from an en-suite shower room. The family bathroom is a modern suite with a bath and handheld shower attachment.

The property is ideally situated less than half a mile from Haywards Heath Railway Station and offers an allocated parking space as well as gas central heating.

Please note:

An annual household income of £43,500 will be required for the affordability criteria of this property. The minimum tenancy length is 12 Months.

Available now.







**Open Plan Living Area**  
18'4" x 13'1" (5.59m x 3.99m)

**Bedroom One**  
10'10" x 9'7" (3.32m x 2.93m)

**En-Suite**  
8'7" x 4'3" (2.64m x 1.31m)

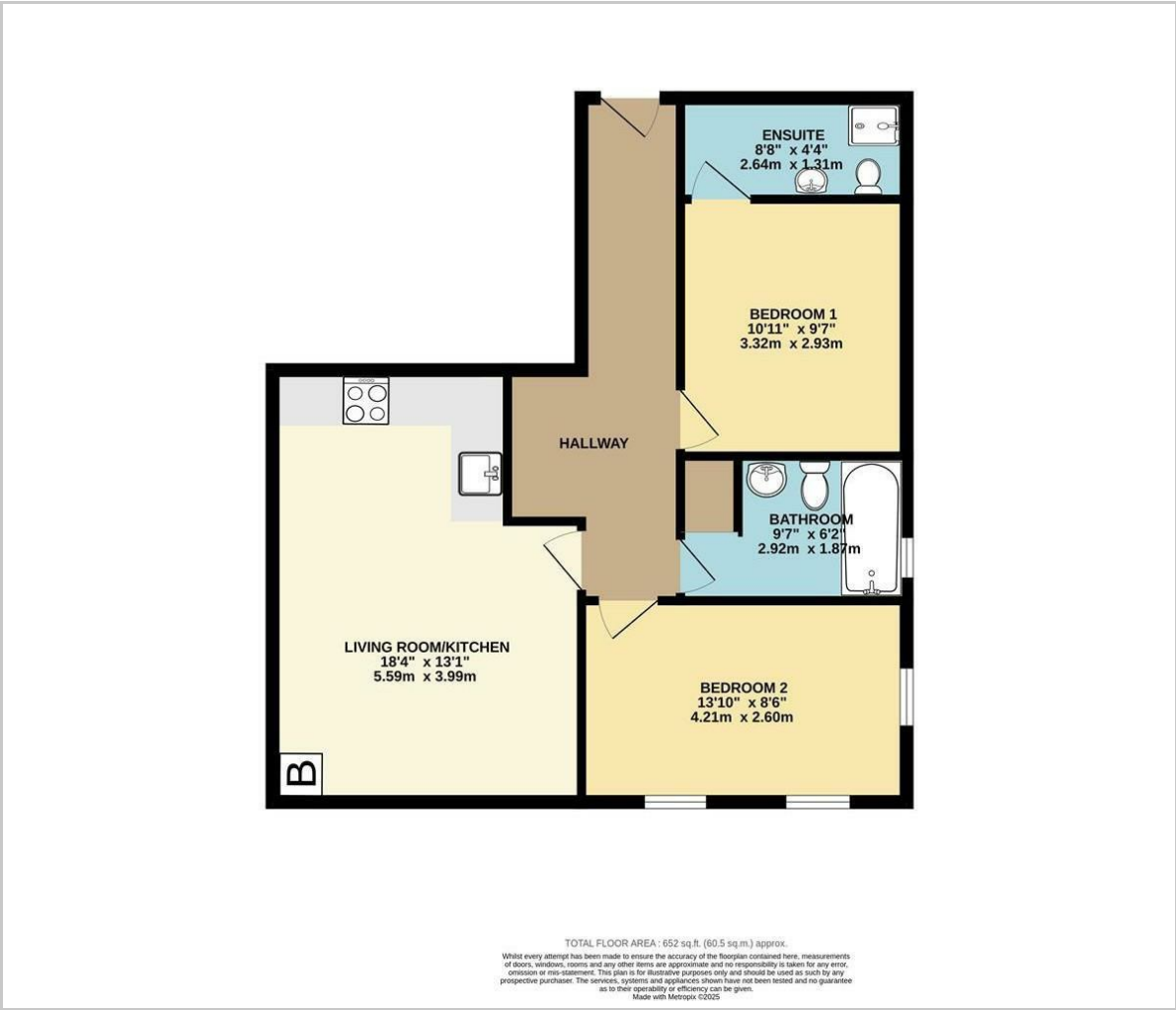
**Bedroom Two**  
13'9" x 8'6" (4.21m x 2.60m)

**Bathroom**  
9'6" x 6'1" (2.92m x 1.87m)

**Council Tax Band C - £2,076.97 Per Annum**



Floor Plan

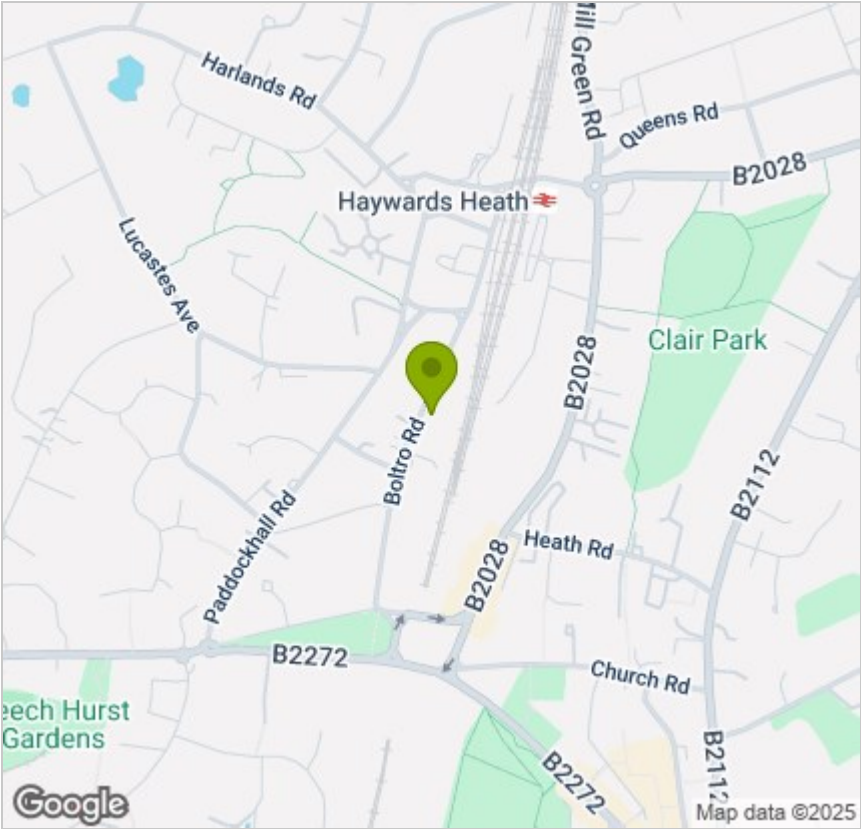


Viewing

Please contact us on 01825 729673 if you wish to arrange a viewing appointment for this property or require further information.

These particulars, whilst believed to be accurate are set out as a general outline only for guidance and do not constitute any part of an offer or contract. Intending purchasers should not rely on them as statements of representation of fact, but must satisfy themselves by inspection or otherwise as to their accuracy. No person in this firms employment has the authority to make or give any representation or warranty in respect of the property.

Area Map



Energy Efficiency Graph

