



OAKFIELD



Eight Bells Close, Buxted, Uckfield, TN22 4JT

Asking Price £650,000





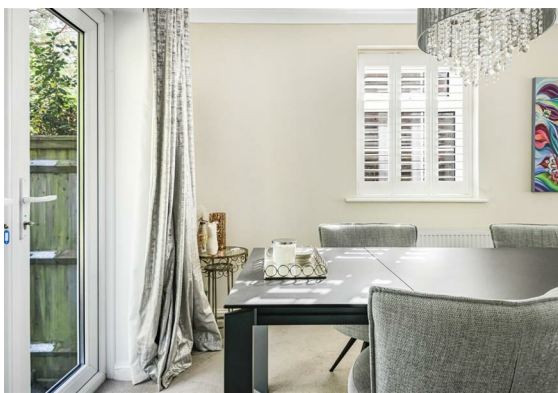
## Eight Bells Close, Buxted, Uckfield, TN22 4JT

Detached 4-bedroom family home with charming gardens, situated in the heart of the popular village of Buxted.

This property is an attractive detached family home which has been extended by the current owner to provide contemporary, light and airy open plan living accommodation. This stylishly presented property is superbly located for road and rail links and is set within the sought-after village of Buxted.

A bright entrance hall leads to a generous, sitting room with a large bay window with delightful views over the front garden, and a feature fireplace, with an adjoining dining room with patio doors leading out to the rear garden. From the dining room an archway leads through to the contemporary kitchen which is well-equipped with a comprehensive range of wall and base units and integral appliances. Three bedrooms are situated on the ground floor, and are served by a spacious shower room, and with an additional adjoining WC. Arranged over the first floor is the principal bedroom served by an ensuite shower room which is partially completed.

The property is approached over a driveway providing ample off-road parking and leading to the garage which currently comprises as a utility space with sink and room for washing machine and tumble dryer. The attractive rear garden has an eastly aspect and forms a lovely backdrop to the property, with a paved terrace ideal for al fresco entertaining. The patio leads to an area of lawn which wraps around the property, flanked by borders planted with established specimen trees and herbaceous shrubs. Additionally, there is the benefit of a generous outbuilding with electrics providing an ideal space for a range of uses.







### Living Room

17'5" x 12'11" (5.32 x 3.94)

### Kitchen

11'0" x 8'4" (3.36 x 2.56)

### Dining Room

11'0" x 8'0" (3.36 x 2.46)

### Bedroom One

18'9" x 14'0" (5.72 x 4.29)

### Bedroom Two

14'0" x 9'11" (4.29 x 3.04)

### Bedroom Three

10'11" x 7'4" (3.35 x 2.24)

### Bedroom Four

8'0" x 6'2" (2.44 x 1.88)

### Garden Room/Office

17'10" x 7'4" (5.44 x 2.24)

### Garage

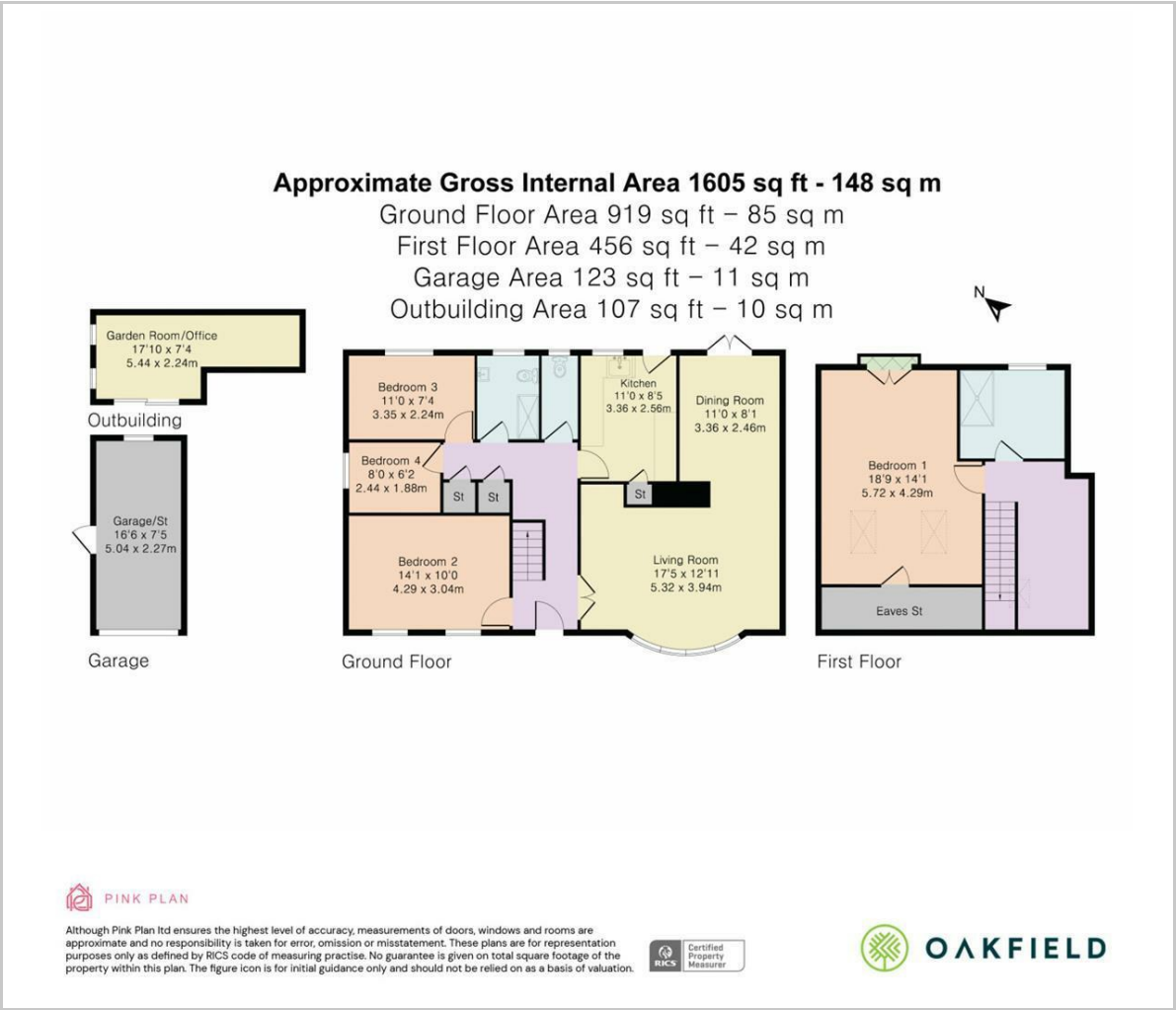
16'6" x 7'5" (5.04 x 2.27)

**Council Tax Band E - £3036**





Floor Plan

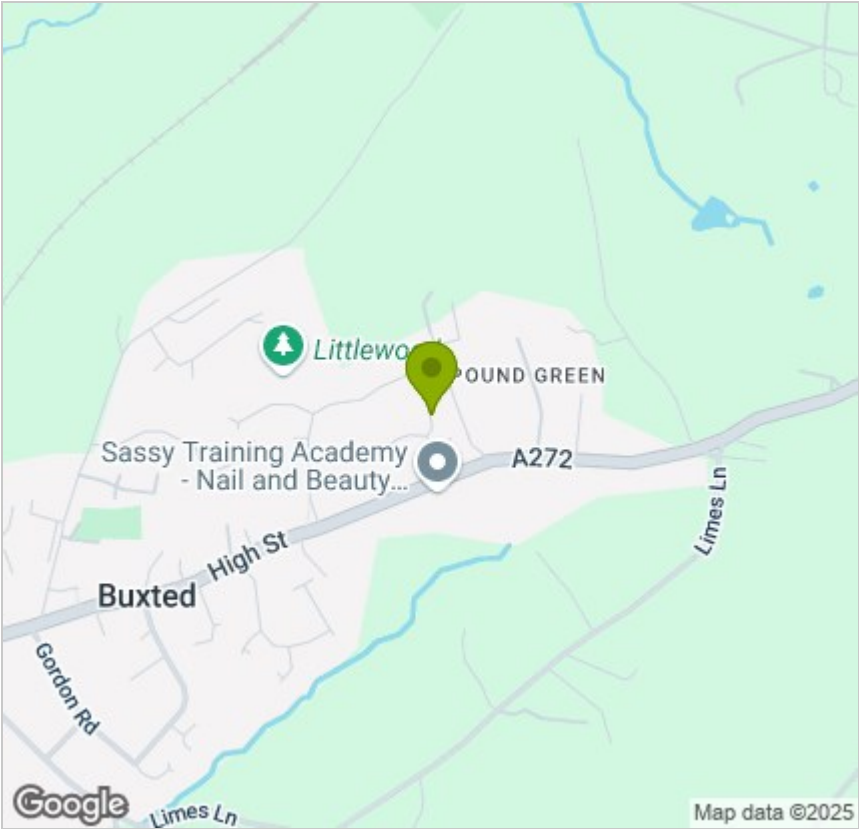


Viewing

Please contact us on 01825 762132 if you wish to arrange a viewing appointment for this property or require further information.

These particulars, whilst believed to be accurate are set out as a general outline only for guidance and do not constitute any part of an offer or contract. Intending purchasers should not rely on them as statements of representation of fact, but must satisfy themselves by inspection or otherwise as to their accuracy. No person in this firms employment has the authority to make or give any representation or warranty in respect of the property.

Area Map



Energy Efficiency Graph

