



OAKFIELD



Markland Way, Uckfield TN22 2DE

Guide Price £450,000



Markland Way, Uckfield TN22 2DE

This well presented three bedroom link-detached house is located within a small cul-de-sac on the popular West Park development within short walking distance of Uckfield's high street, schools and recreation ground.

The property is available with NO ONWARD CHAIN and benefits from a single garage and enviable low maintenance south facing garden.

The accommodation comprises an entrance hall with w/c to side and opens to a spacious and open plan living/dining room enjoying a double aspect and a feature fireplace.

From the dining area sliding patio doors open to the south facing rear garden.

A further door from the living area opens to the modern kitchen fitted with a good level of both wall and base units also with a door to the rear garden.

The first floor leads to three bedrooms served by a family bathroom, whilst the principle bedroom enjoys it's own en-suite shower room and fitted wardrobe.

Outside to front is a small area of garden to side and the property benefits from a driveway leading to an attached single garage.

The rear garden enjoys a south facing aspect enclosed by both a brick wall and fencing with a pleasant patio area adjacent to the property leading to an expanse of lawn along with access to the linked garage.

Location:

Situated on the popular West Park development with its nature reserve and woodland walks. This development is well positioned with easy access to the town centre, Tescos, and a medical centre.

Uckfield has a railway station which has commuter services to London/London Bridge.

The town benefits from a wide range of amenities including shops, restaurants, cinema, library, local hospital, bus station and schooling for children of all ages including a community college.





The coastal towns of Eastbourne and Brighton, the Royal Spa town of Tunbridge Wells, Gatwick airport and the M23/M25 motorways are all within a convenient driving distance as is the Ashdown Forest with its some 6,500 acres of scenic walks and riding by permit.

Living Room

24'10 x 17'10 (7.57m x 5.44m)

Kitchen

9'9 x 8'4 (2.97m x 2.54m)

Garage

17'3 x 8'9 (5.26m x 2.67m)

Bedroom

11'5 x 9'3 (3.48m x 2.82m)

Bedroom

15'3 x 10'10 (4.65m x 3.30m)

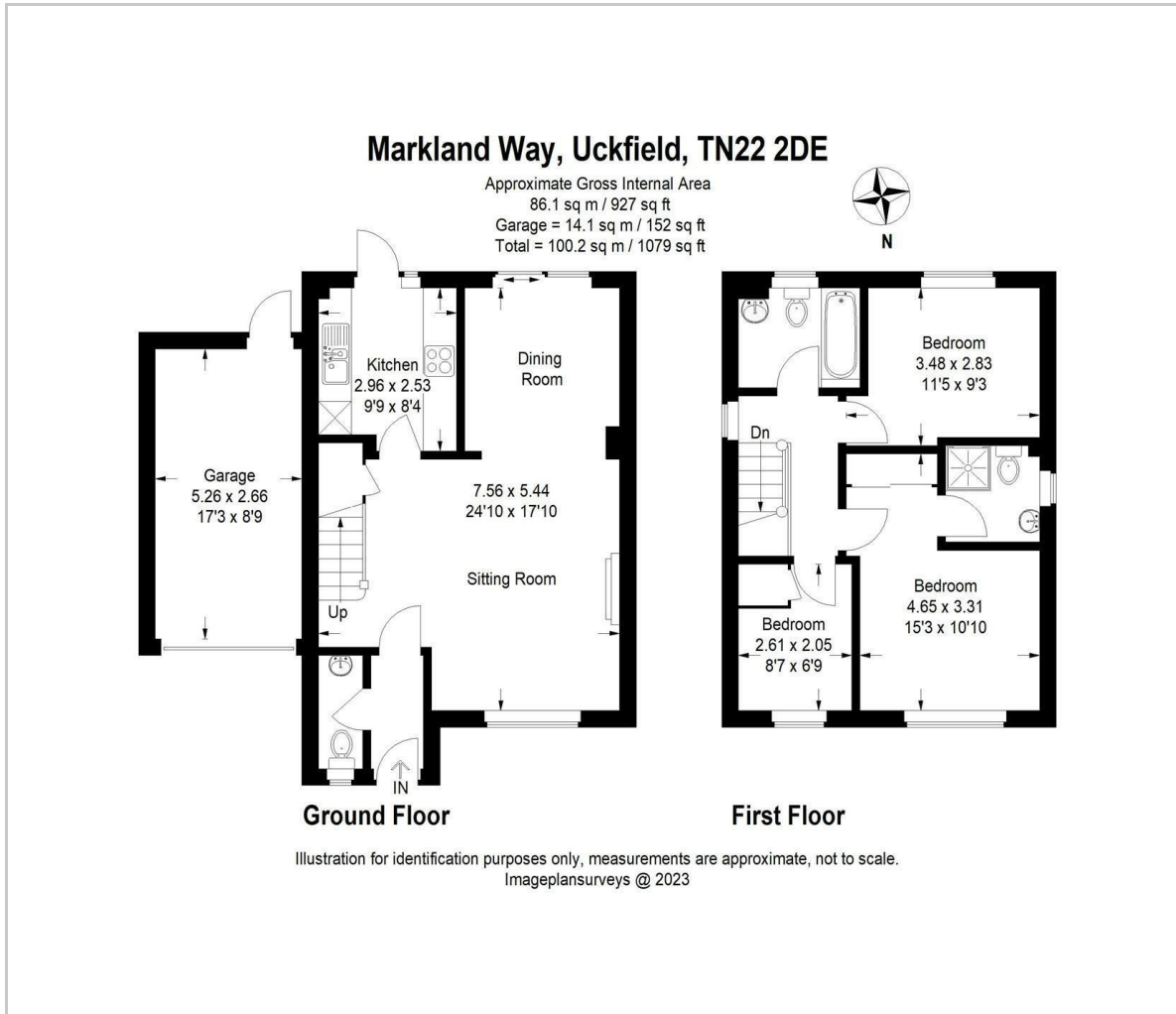
Bedroom

8'7 x 6'9 (2.62m x 2.06m)

Council Tax Band - E £2888



Floor Plan

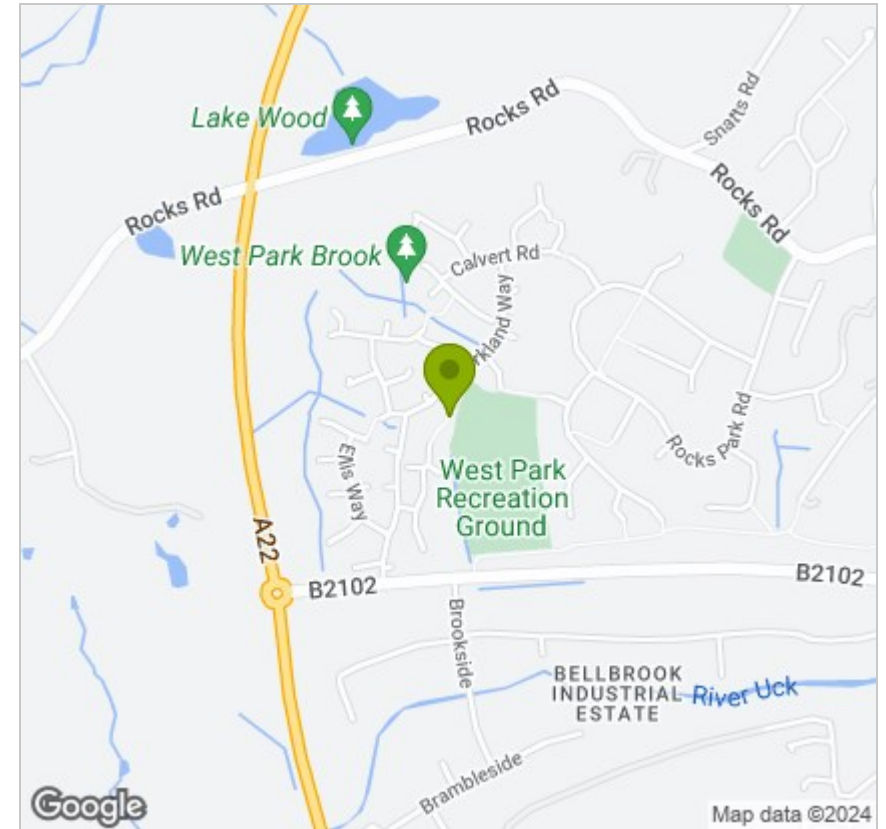


Viewing

Please contact us on 01825 762132
if you wish to arrange a viewing appointment for this property or require further information.

These particulars, whilst believed to be accurate are set out as a general outline only for guidance and do not constitute any part of an offer or contract. Intending purchasers should not rely on them as statements of representation of fact, but must satisfy themselves by inspection or otherwise as to their accuracy. No person in this firm's employment has the authority to make or give any representation or warranty in respect of the property.

Area Map



Energy Efficiency Graph

