



OAKFIELD



Paddock Lane, Lewes BN7 1TW

Asking Price £625,000



Paddock Lane, Lewes BN7 1TW

Situated on a quiet lane within easy walking distance of the town centre and train station, this beautifully finished modern town house offers fantastic features throughout.

Upon arrival you'll instantly notice how peaceful the location is and can enjoy off road parking along with a single garage, offering a further space or great additional storage.

The home itself has been fully renovated throughout creating a stylish yet homely finish that's easy to fall in love with.

On the first floor you'll find generous size living spaces that flow effortlessly from one to another with a modern kitchen a particular highlight.

On the second floor are two good size double bedrooms, each offering built in wardrobe space along with a stunning modern family bathroom and further office space cleverly created on the landing.

Outside the current owner has made good use of the garden space available, expertly creating a peaceful space to relax in.





Sitting Room

16'2 x 11'3 (4.93m x 3.43m)

Dining Room

11'3 x 10'4 (3.43m x 3.15m)

Kitchen

12'5 x 6'2 (3.78m x 1.88m)

Bedroom

11'4 x 11'3 (3.45m x 3.43m)

Bedroom

12'10 x 11'3 (3.91m x 3.43m)

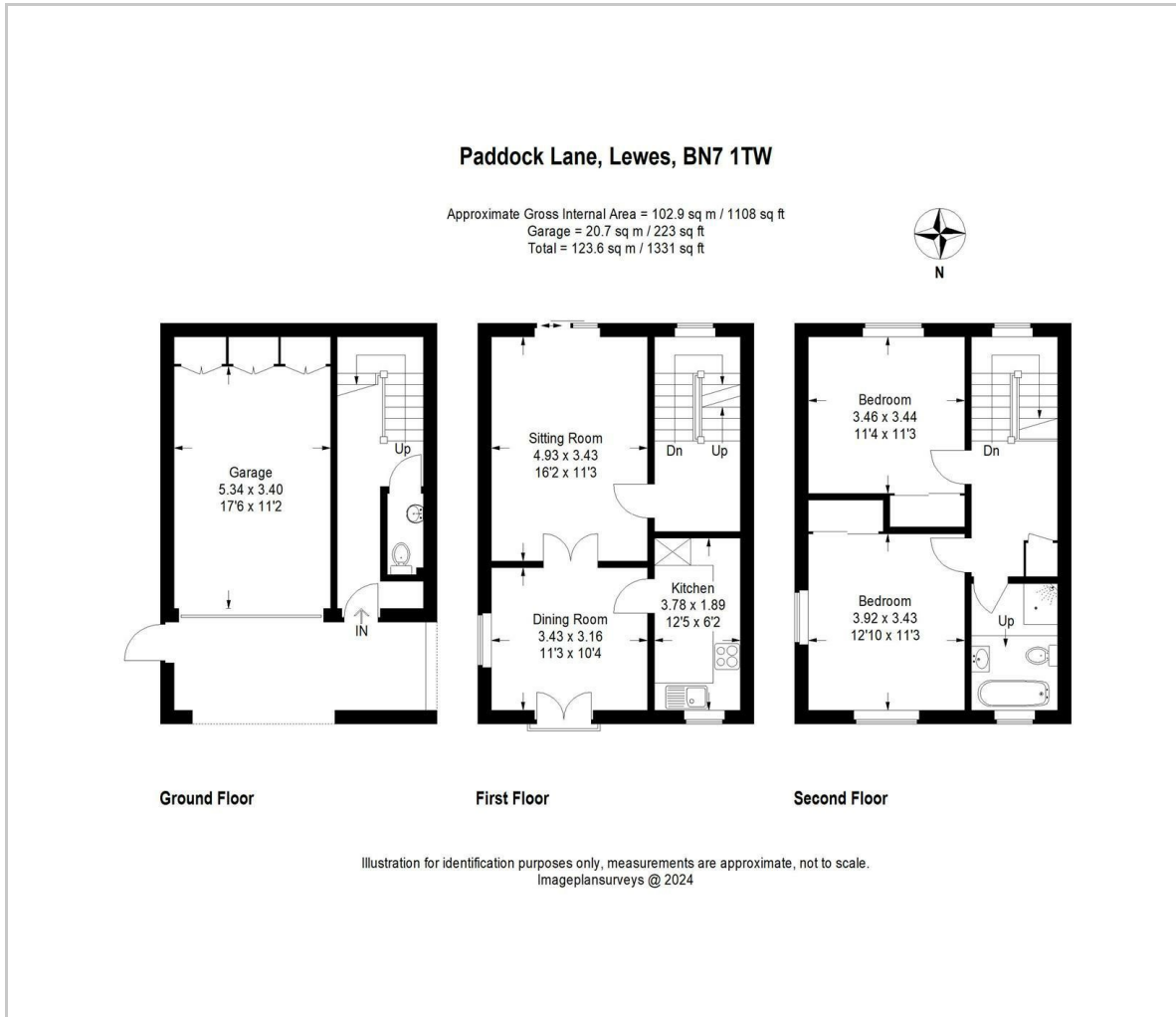
Garage

17'6 x 11'2 (5.33m x 3.40m)

Council Tax Band - D £2,503 per annum



Floor Plan

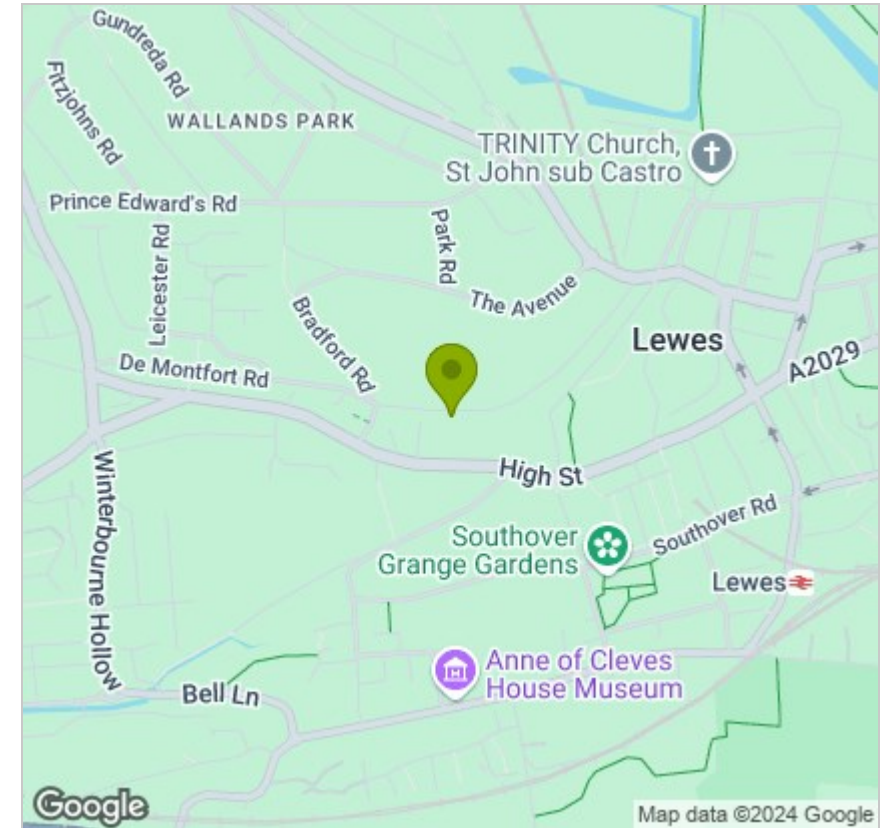


Viewing

Please contact us on 01273 474101 if you wish to arrange a viewing appointment for this property or require further information.

These particulars, whilst believed to be accurate are set out as a general outline only for guidance and do not constitute any part of an offer or contract. Intending purchasers should not rely on them as statements of representation of fact, but must satisfy themselves by inspection or otherwise as to their accuracy. No person in this firm's employment has the authority to make or give any representation or warranty in respect of the property.

Area Map



Energy Efficiency Graph

