



OAKFIELD



Westwood Mews, Heathfield TN21 0DQ

Asking Price £169,000





## Westwood Mews, Heathfield TN21 0DQ

Located in a peaceful cul-de-sac, this bright and spacious one-bedroom first-floor flat is offered with no onward chain.

Offering a blend of comfort and convenience this property is an ideal opportunity for first time buyers, investors or those seeking a peaceful retreat.

It boasts a modern open-plan kitchen and living area that offers plenty of natural light, a double bedroom with lovely views of nearby trees, and an allocated parking space.

Ideally positioned within walking distance of Heathfield High Street, schools, bus routes, and local amenities.

The scenic Cuckoo Trail is also close by, offering beautiful walking and cycling routes all the way to Eastbourne.







### Kitchen/Lounge

15'6 x 11'5 (4.72m x 3.48m)

### Bedroom

12'6 x 11'3 (3.81m x 3.43m)

### Lease Information

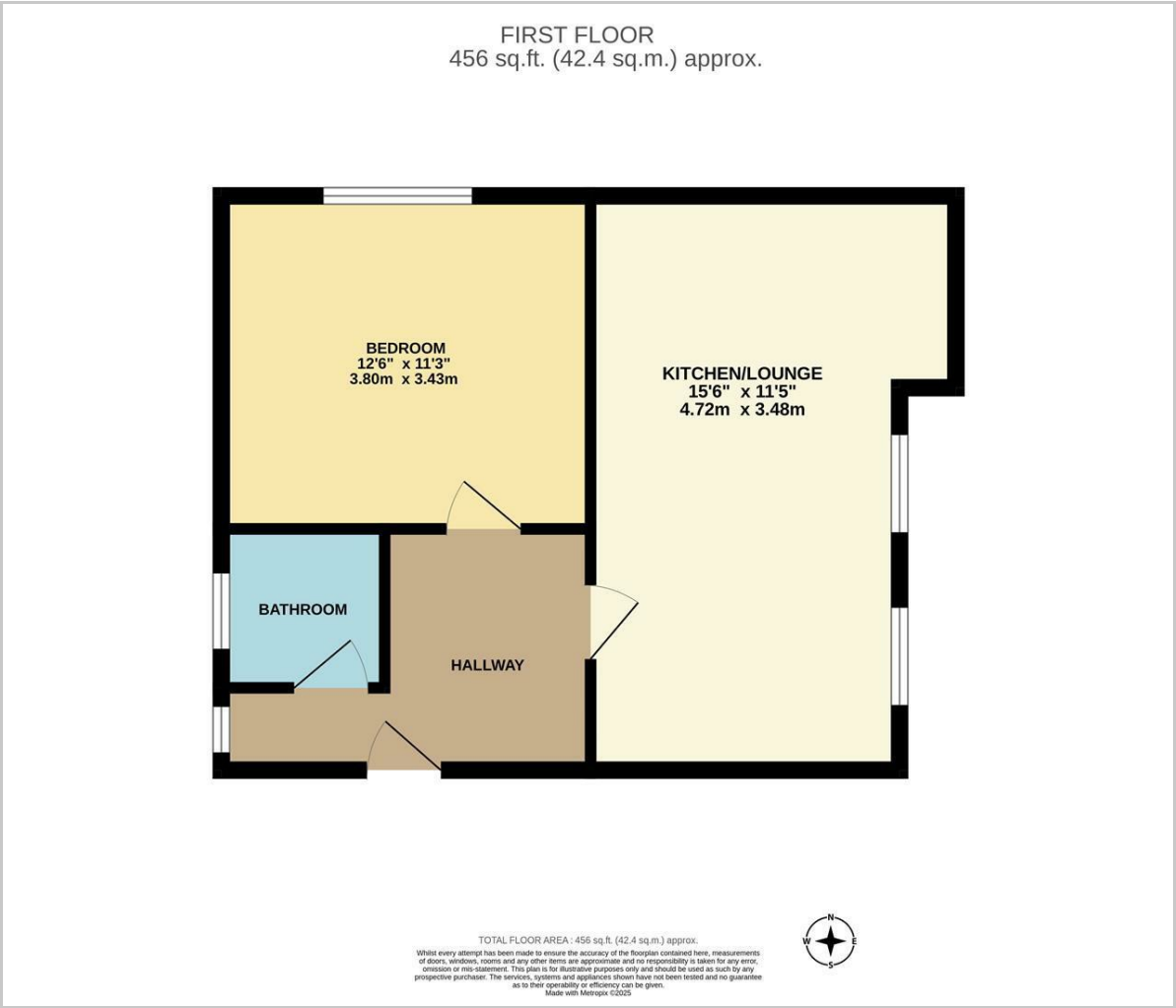
The seller advises that the property is offered as leasehold and has approximately 81 years remaining on the lease. The service charge, ground rent and estate charges are approximately £1,237.46 per annum.

**Council Tax Band - B £2,029 per annum**





Floor Plan

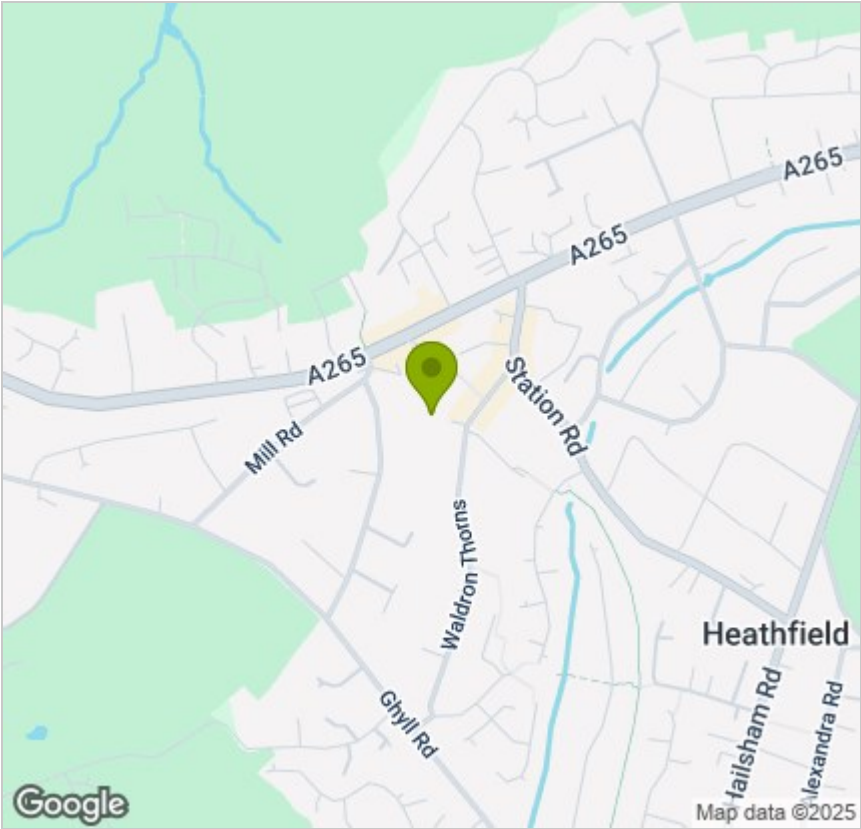


Viewing

Please contact us on 01435 864233  
if you wish to arrange a viewing appointment for this property or require further information.

These particulars, whilst believed to be accurate are set out as a general outline only for guidance and do not constitute any part of an offer or contract. Intending purchasers should not rely on them as statements of representation of fact, but must satisfy themselves by inspection or otherwise as to their accuracy. No person in this firms employment has the authority to make or give any representation or warranty in respect of the property.

Area Map



Energy Efficiency Graph

