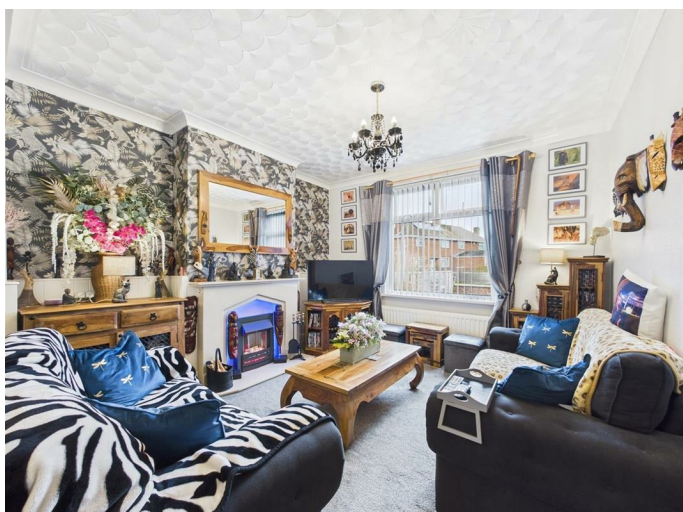
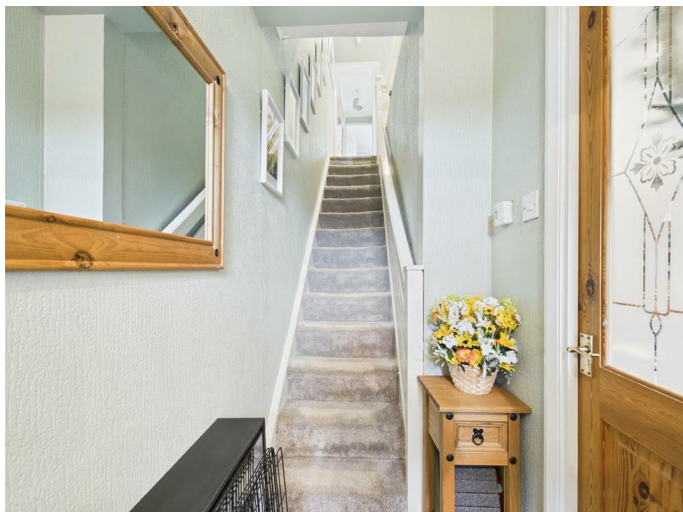




90 Freiston Road, Boston, PE21 0JL
Price £159,950

90 Freiston Road, Boston, PE21 0JL

This well-maintained three-bedroom terraced house offers a spacious and modern living environment. The ground floor boasts an open-plan living and dining area, seamlessly connected to the rear garden through a patio door. The modern kitchen leads to a convenient laundry room with direct garden access. The outdoor space is fully paved, featuring a covered patio area, two storage sheds, and a rear gate that provides access to an allocated parking space. Upstairs, the property includes a master bedroom with two windows, a double bedroom, a single bedroom, and a family bathroom with a shower. The front yard is neatly covered in gravel, enhancing the property's curb appeal.



Open-Plan Living/Dining Room

15'6" x 24'4" (4.74m x 7.43)

this large area is ideal for entertaining and family gatherings, with patio doors leading to the garden.

Modern Kitchen

7'6" x 14'2" (2.31 x 4.33)

Well-designed with ample storage and workspace.

Convenient Laundry Room

7'8" x 6'3" (2.34m x 1.92m)

Offering additional space for appliances and direct garden access.

Outdoor Patio & Garden

Fully paved with a covered seating area and two storage sheds for practicality.

Allocated Parking Space

Accessible via a garden gate, ensuring private parking.

Master Bedroom

14'5" x 11'11" (4.40m x 3.65m)

Featuring two windows for natural light.

Double Bedroom

8'7" x 12'1" (2.62m x 3.69m)

Perfect for guests or family members.

Single Bedroom

8'0" x 7'1" (2.44m x 2.16m)

Ideal as a child's room or home office.

Family Bathroom

5'2" x 6'7" (1.59m x 2.02m)

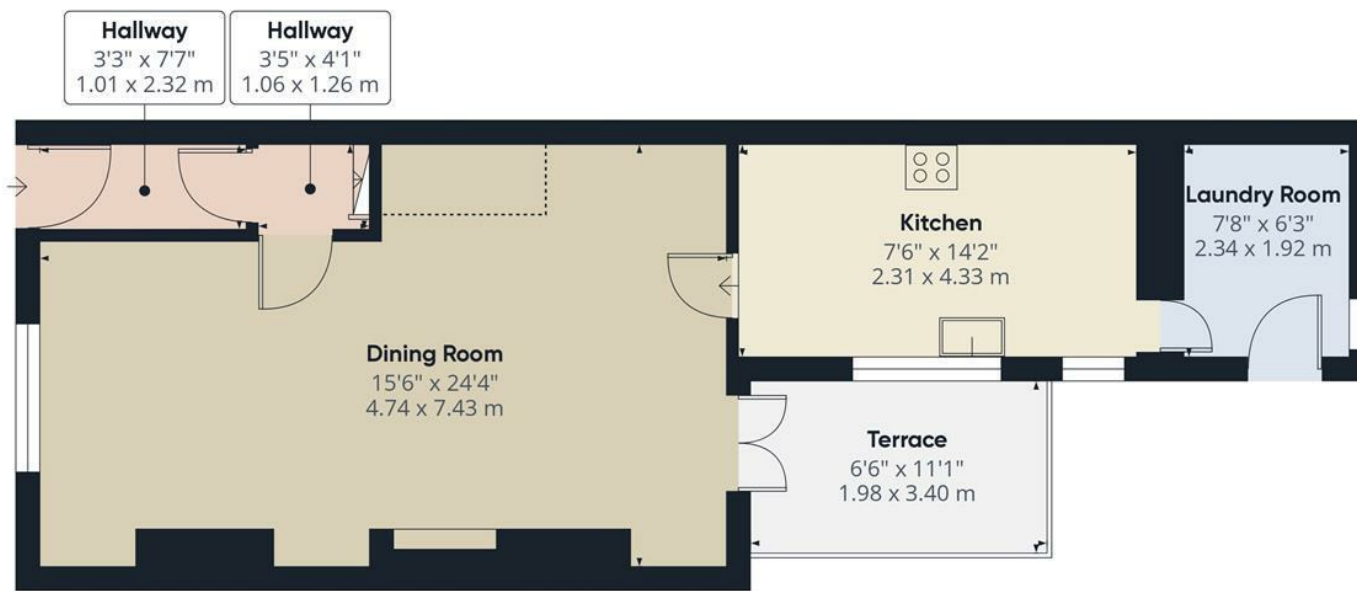
Fitted with a shower.

Gravel-Covered Front Yard

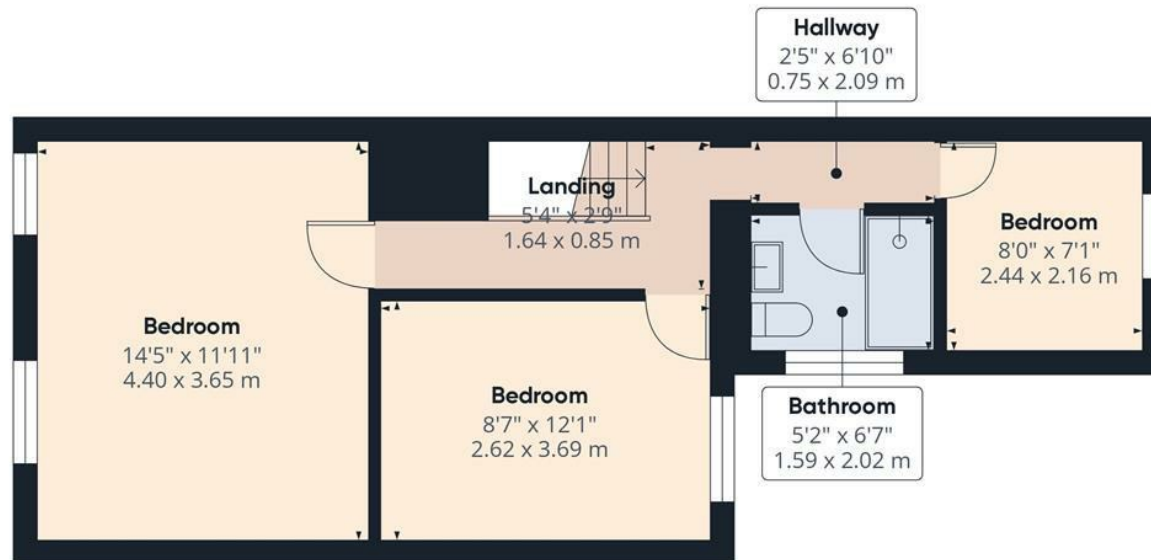
Enhancing the home's curb appeal and providing a low-maintenance exterior.







Ground Floor



Floor 1

Approximate total area⁽¹⁾

951.96 ft²
88.44 m²

Balconies and terraces

71.36 ft²
6.63 m²

Reduced headroom

15.42 ft²
1.43 m²

(1) Excluding balconies and terraces

Reduced headroom
Below 5 ft/1.5 m

While every attempt has been made to ensure accuracy, all measurements are approximate, not to scale. This floor plan is for illustrative purposes only.

Calculations are based on RICS IPMS 3C standard.

GIRAFFE360