



4 Redbourne Terrace, Haven Village, Boston, PE21 8PX
Price £179,950

4 Redbourne Terrace, Haven Village, Boston, PE21 8PX

This spacious and well-designed three-story home offers approximately 1,428 sq. ft. (132.67 sq. m.) of living space, providing a perfect balance of comfort and functionality. With four generously sized bedrooms, two bathrooms, and multiple living areas, this property is ideal for families or professionals seeking ample space. The home benefits from a modern kitchen, a cozy living room, and a practical layout across three floors.



Hallway (Entry)

6'5" x 5'1" (1.97 x 1.56)

Kitchen

8'9" x 17'7" (2.69m x 5.38m)

Spacious kitchen with plenty of counter and storage space.

Living Room

15'7" x 11'8" (4.75m x 3.56m)

A bright and inviting area with double doors leading outside.

Hallway

3'4" x 12'3" (1.02m x 3.73m)

Connecting key spaces with easy access to the kitchen and living room.

WC

2'8" x 5'9" (0.83 x 1.76)

Conveniently located guest toilet.

Room 1

19'10" x 11'3" m (6.07 x 3.45 m)

Spacious primary bedroom or multipurpose room with ample light.

Room 2

15'7" x 10'1" (4.76 x 3.09)

Well-sized second bedroom or home office.

Bathroom

7'4" x 7'4" (2.26 x 2.24)

Modern bathroom with essential amenities.

First Floor Landing

4'1" x 11'8" (1.25 x 3.58)

Connecting the rooms with a functional layout.

Room 3

19'10" x 11'8" (6.06 x 3.57)

Large bedroom with versatile potential.

Room 4

15'7" x 10'3" (4.77 x 3.14)

Another well-sized bedroom with great proportions.

Bathroom

5'7" x 6'11" (1.72 x 2.11)

Compact yet functional second bathroom.

Laundry Room

2'6" x 6'10" (0.78 x 2.09)

A practical space for laundry needs.

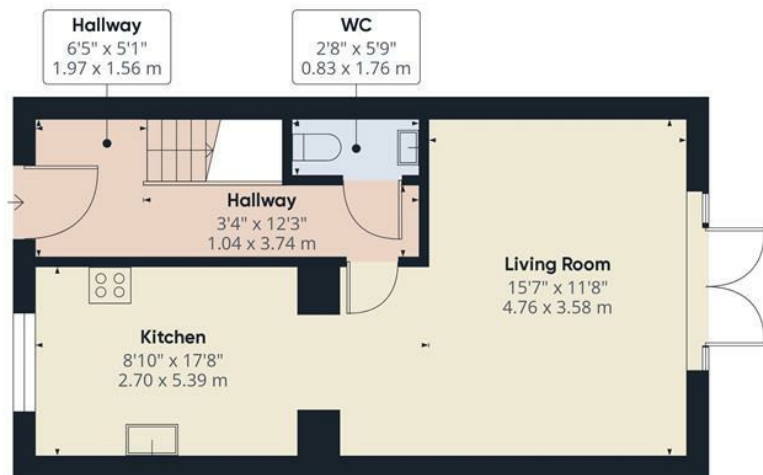
Second Floor Landing

2'7" x 6'11" (0.80 x 2.11)

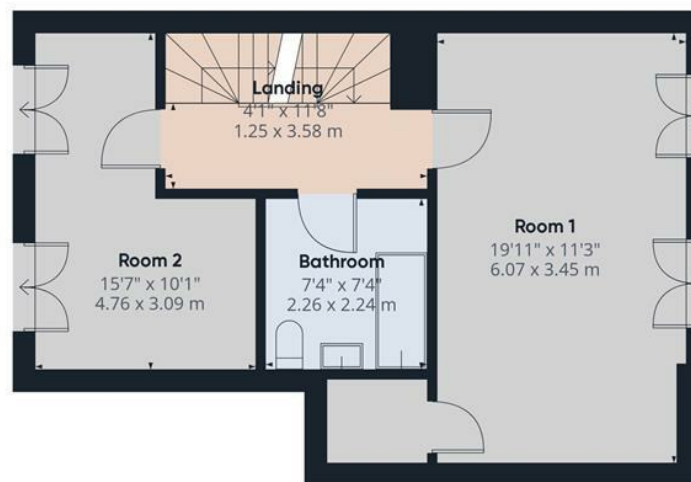
Central connection point for second-floor rooms.



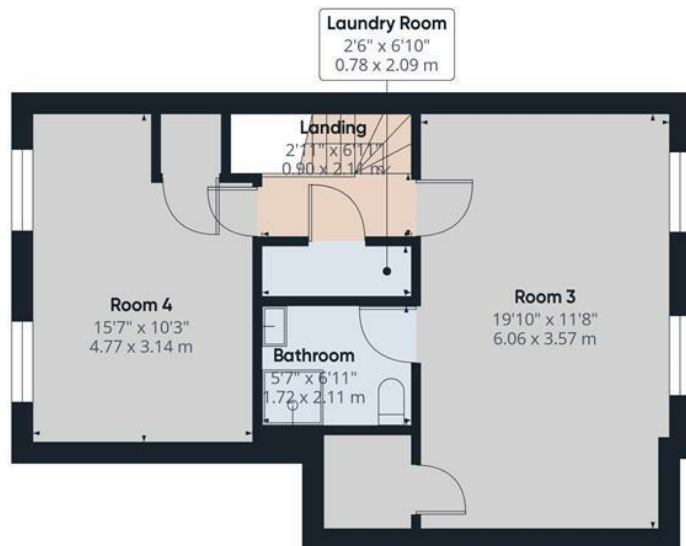




Ground Floor



Floor 1



Floor 2

Approximate total area⁽¹⁾

1428.06 ft²
132.67 m²

(1) Excluding balconies and terraces.

While every attempt has been made to ensure accuracy, all measurements are approximate, not to scale. This floor plan is for illustrative purposes only.

Calculations were based on RICS IPMS 3C standard. Please note that calculations were adjusted by a third party and therefore may not comply with RICS IPMS 3C.

GIRAFFE360