



92 Freiston Road, Boston, PE21 0JL
Price £149,500



Spacious 4-Bedroom Terrace House for Sale with or without tenants

Key Features:

Bedrooms: 4 generous-sized bedrooms

Kitchen: Fully fitted kitchen

Living Areas:

Comfortable lounge with a feature fireplace

Large dining room perfect for family gatherings

Separate utility room for added convenience

Bathrooms:

Downstairs shower room

Family bathroom on the upper floor

Special Features: Bedroom 4 boasts a beautiful fireplace

Outdoor Space:

Front garden laid to lawn, offering a welcoming curb appeal

Spacious rear garden with a large BBQ area, perfect for outdoor entertaining

Garden shed for additional storage

Rear access leading to Freiston Play Park

Additional Information:

The property is being sold with no onward chain.

Ideal for investors or a First Time Buyer.

Location:

Conveniently located within walking distance to the town center and train station, offering easy access to local amenities and transportation

links.

This charming terrace house offers a blend of comfortable living spaces and practical features, making it a perfect family home or investment opportunity. Don't miss out on this excellent property in a sought-after location.



Lounge

11'10" x 12'2" (3.62 x 3.71)

Beautifully decorated with a feature fireplace.

Bedroom boasts a beautiful fireplace. Window overlooks front garden

Dining Room

11'9" x 14'7" (3.59 x 4.46)

Good size dining room, stairs to first floor, door to kitchen, hallway and lounge

Kitchen

14'4" x 8'2" (4.37 x 2.49)

Fitted kitchen, boasting ample worktop space, range of fitted wall and base units. Tiled floor.

Utility Room

13'5" x 4'3" (4.09 x 1.30)

Leads to downstairs shower room

Shower room

6'8" x 3'9" (2.05 x 1.15)

Sink, WC and shower

Hallway

10'9" x 3'2" (3.30 x 0.99)

Bedroom 1

6'2" x 7'10" (1.88 x 2.39)

Bedroom overlooks the rear garden. Lots of built in storage

Bathroom

7'10" x 5'4" (2.41 x 1.64)

Family bathroom comprising of Sink, WC and bath

Bedroom 2

11'11" x 9'0" (3.65 x 2.76)

Built in storage, window overlooks rear garden

Bedroom 3

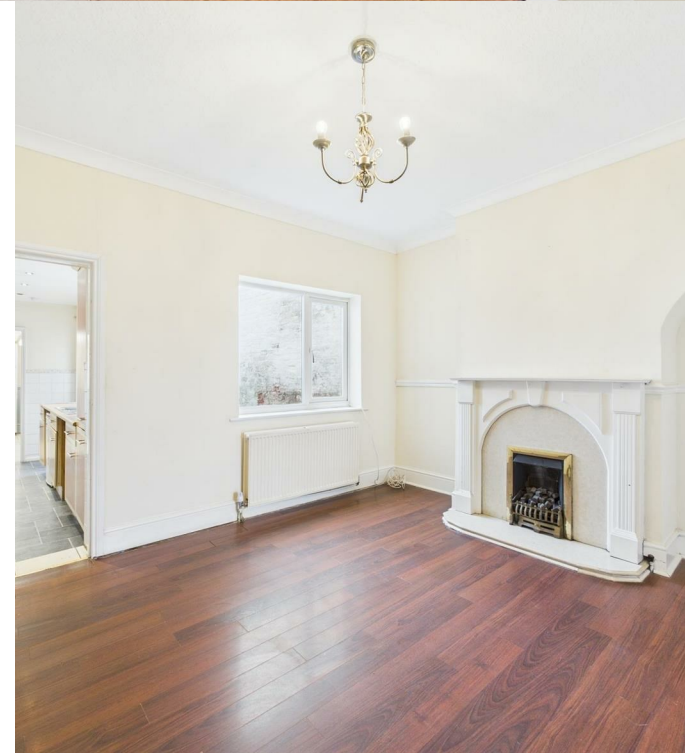
8'9" x 6'3" (2.67 x 1.93)

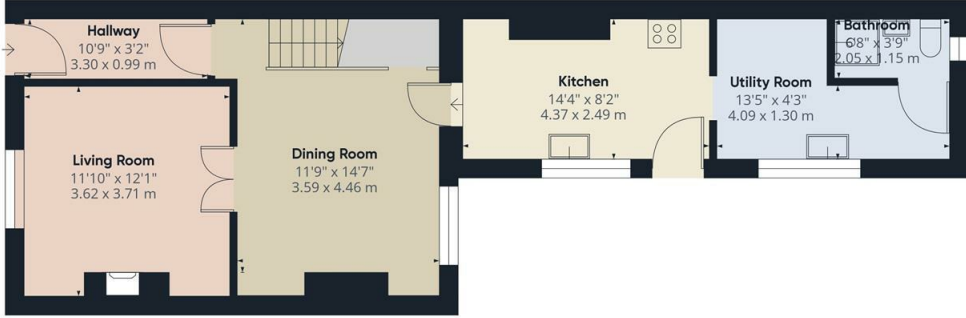
Bedroom 4

11'10" x 8'0" (3.61 x 2.44)

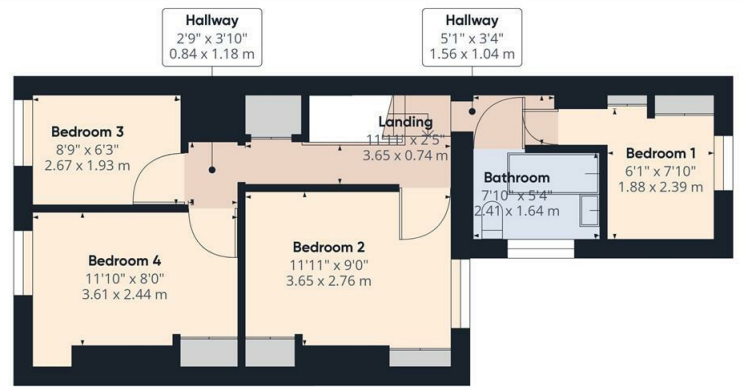








Ground Floor



Floor 1

Approximate total area⁽¹⁾
1042.16 ft²
96.82 m²

(1) Excluding balconies and terraces

While every attempt has been made to ensure accuracy, all measurements are approximate, not to scale. This floor plan is for illustrative purposes only.

GIRAFFE360

