



Ferndale Hubberts Bridge Road, Kirton Holme, PE20 1TW
Offers in the region of £255,000



Ferndale Hubberts Bridge Road, Kirton Holme, PE20 1TW

We are pleased to offer for Sale this well presented three bedroom detached bungalow on Hubberts Bridge Road, Kirton Holme. The property comprises of an a large, open-plan living room/diner, brand new kitchen, bathroom and three bedrooms with small shower room off one. There is a large garden to the rear of the property and driveway to the front and side. The property has been recently redecorated throughout.



Living Room
12'7" x 24'4" (3.86m x 7.42m)



A spacious and inviting living room with brown laminate flooring and a stunning glass roof, allowing natural light to flood the space. It offers a great place to relax and entertain, with easy access to the garden through double-glazed UPVC doors.

Dining Room
11'8" x 13'5" (3.58m x 4.11m)



This generous open-plan dining room features grey laminate flooring and a bright, airy atmosphere. It's perfect for family meals or entertaining guests, with direct access to the kitchen and a clear view of the garden.

Kitchen
11'5" x 10'4" (3.50m x 3.16m)



A well-equipped kitchen with built-in double ovens, an electric hob, and a gas boiler. It features lino flooring and double-glazed windows, creating a functional and light-filled cooking space ideal for preparing meals.

Family Bathroom
6'4" x 10'2" (1.94m x 3.10m)



A stylish bathroom with large tiles, a shower over the bath, and a built-in mirror on the wall. The room is completed with lino flooring and a small double-glazed window at the back, offering a relaxing space to unwind.

Bedroom 1 (Largest)
11'8" x 13'8" (3.57m x 4.19m)



The largest bedroom in the bungalow, offering plenty of space with carpeted flooring and a large double-glazed window. It's a bright, comfortable room ideal for a peaceful retreat.

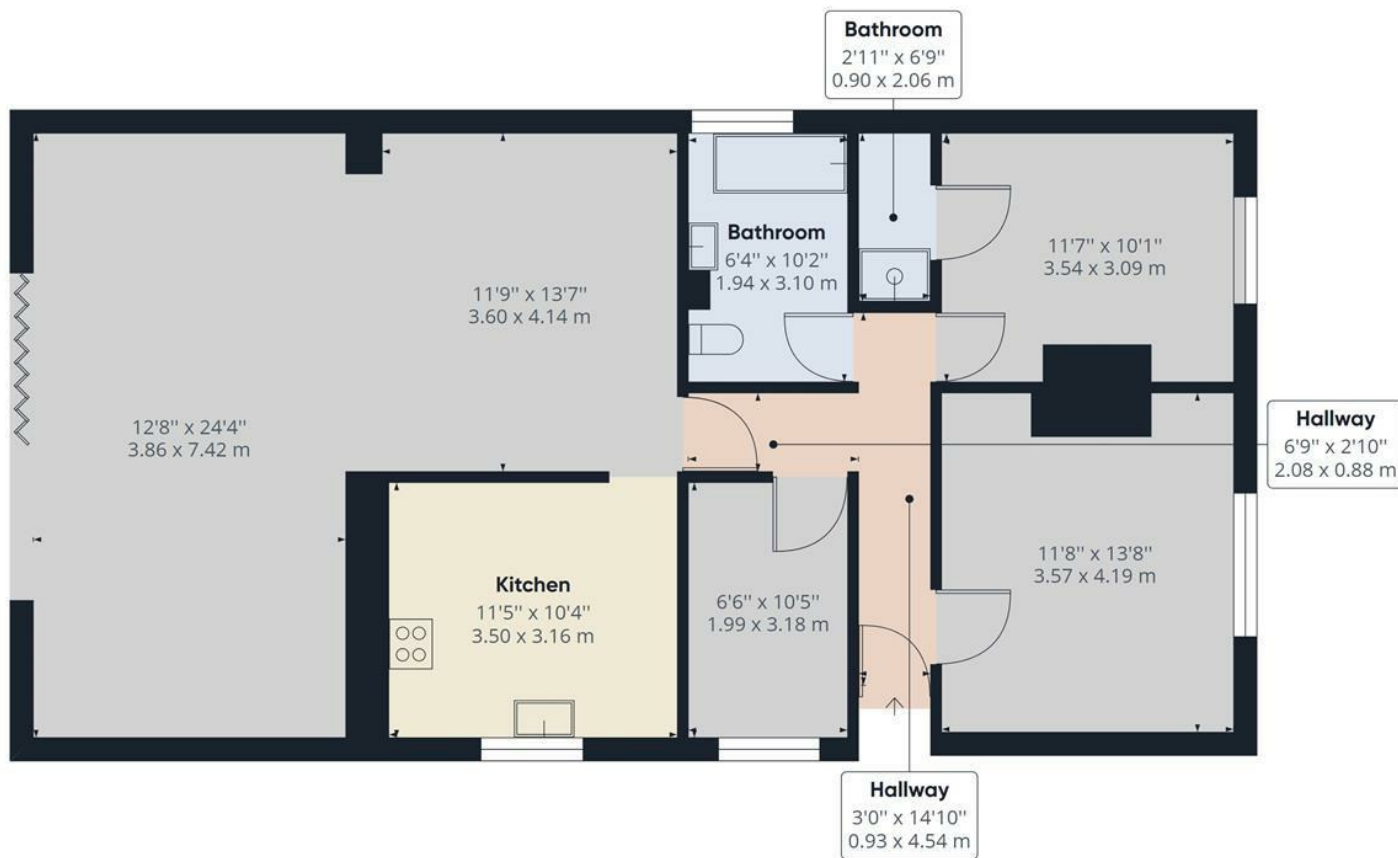
Bedroom 2 en-suite shower/wet room
11'7" x 10'1" (3.54 x 3.09)



Bedroom 2
A spacious bedroom with carpeted flooring and a double-glazed window. It includes a convenient en-suite walk-in shower (0.90m x 2.06m), providing added privacy and comfort.







Approximate total area⁽¹⁾

1112.86 ft²
103.39 m²

(1) Excluding balconies and terraces

While every attempt has been made to ensure accuracy, all measurements are approximate, not to scale. This floor plan is for illustrative purposes only.

GIRAFFE360