



**30 Salem Street, Gosberton, Spalding, PE11 4NQ**  
**Offers in excess of £175,000**



## 30 Salem Street, Gosberton, Spalding, PE11 4NQ

For sale in the charming village of Gosberton, we present a delightful and well-maintained 3-bedroom property that exudes warmth and comfort. This beautiful home is ready to welcome a new family into its inviting embrace.

Upon entering, you'll immediately notice the care and attention given to this property. The open-plan kitchen/diner creates a spacious and inviting atmosphere, perfect for both casual family meals and entertaining guests. The kitchen is equipped with modern appliances and offers ample storage and countertop space for culinary enthusiasts.

Adjacent to the kitchen, you'll find a separate living room providing a cosy and tranquil retreat. Ideal for relaxing evenings with loved ones or enjoying a good book in peaceful solitude, this space is versatile and adapts effortlessly to your lifestyle.

Venturing upstairs, you'll discover three thoughtfully designed bedrooms. The first is a comfortable single bedroom, ideal for a child's room, a home office, or guest space. The two double bedrooms offer plenty of room to accommodate larger furniture and create a comfortable haven for restful nights.

Completing the upper level is a tastefully appointed family bathroom, designed with both style and functionality in mind. Outside, the property features a well-maintained backyard.



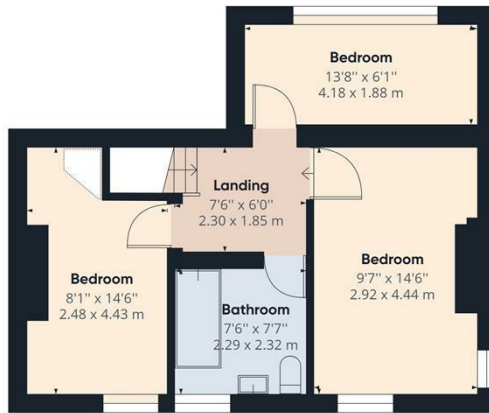








Ground Floor



Floor 1

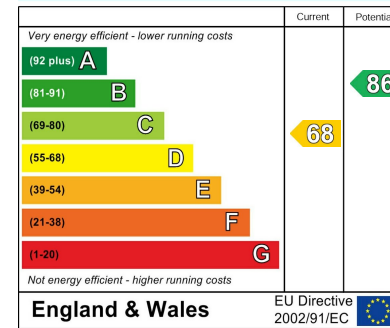
Approximate total area<sup>(1)</sup>  
861.88 ft<sup>2</sup>  
80.07 m<sup>2</sup>

(1) Excluding balconies and terraces

While every attempt has been made to ensure accuracy, all measurements are approximate, not to scale. This floor plan is for illustrative purposes only.

GIRAFFE360

**Energy Efficiency Rating**



**Environmental Impact (CO<sub>2</sub>) Rating**

