

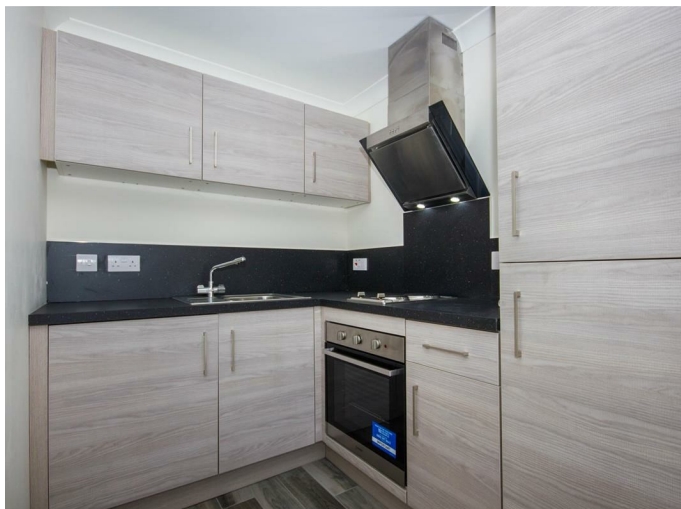


21 Threadneedle Street, Boston, Lincolnshire, PE21 6SP
£550,000



21 Threadneedle Street, Boston, Lincolnshire, PE21 6SP

A prestigious TOWN CENTRE development newly built in close proximity to WIDE BARGATE and PESCOD SQUARE. A mix ONE and TWO bedroom open-plan apartments each boasting a high quality Kitchen with integrated appliances. Each of the FIVE apartments are let on a fixed term Assured Shorthold Tenancy with insured deposits held. The development has an outside communal space with bin store and security bollards to the entrance.



Apartment ONE (A1)

Ground Floor:

Open-plan Living / Kitchen 4.9m x 2.82m (16'0" x 9'3")

Bedroom ONE 3.82m x 2.63m (12'6" x 8'7")

Shower Room

Bedroom TWO 2.9m x 2.82m (9'6" x 9'3")

Apartment TWO (A2)

First Floor:

Open-plan Living / Kitchen 4.9m x 2.82m (16'0" x 9'3")

Bedroom 2.9m x 2.82m (9'6" x 9'3")

Shower Room

Apartment THREE (A3)

10'9" x 9'4" (3.28m x 2.84m)

First Floor:

Open-plan Living / Kitchen 4.73m x 2.84m (15'6" x 9'3")

Bedroom 3.3m x 2.86m (10'9" x 9'4")

Shower Room

APARTMENT FOUR (A4)

Second Floor:

Open-plan Living / Kitchen 4.9m x 2.82m (16'0" x 9'3")

Bedroom 2.9m x 2.82m (9'6" x 9'3")

Shower Room

APARTMENT FIVE (A5)

Second Floor:

Open-plan Living / Kitchen 4.73m x 2.84m (15'6" x 9'3")

Bedroom 3.3m x 2.86m (10'9" x 9'4")

Shower Room

Outside

The development has an outside communal space with bin store and security bollards to the entrance.





