

**COURT CLOSE
ST JOHN'S WOOD PARK
LONDON
NW8**

Bargets Estate Agents

A modern four bedroom house offered in excellent condition and located 0.6 miles from St John's Wood High street and Underground station (Jubilee line).

The property is set over three floors and offers four bedrooms, large open planned kitchen and living area, two shower rooms, family bathroom and garden with separate studio room. Principal bedroom with walk-in wardrobe, en-suite bathroom, and access to a private terrace.

The property also benefits from off street parking. Council Tax Band: G

Pet Friendly

Heating & Hot Water Included

**4 BEDROOMS : BATHROOM : 2 SHOWER ROOMS : EN SUITE BATHROOM :
RECEPTION ROOM : KITCHEN/DINING ROOM : STUDY : CONSERVATORY : STUDIO
: TERRACE : PATIO : GARDEN : PARKING : EPC RATING C**

PRICE

£2,950 Per Week / £12,783 Per Month

Subject to Contract















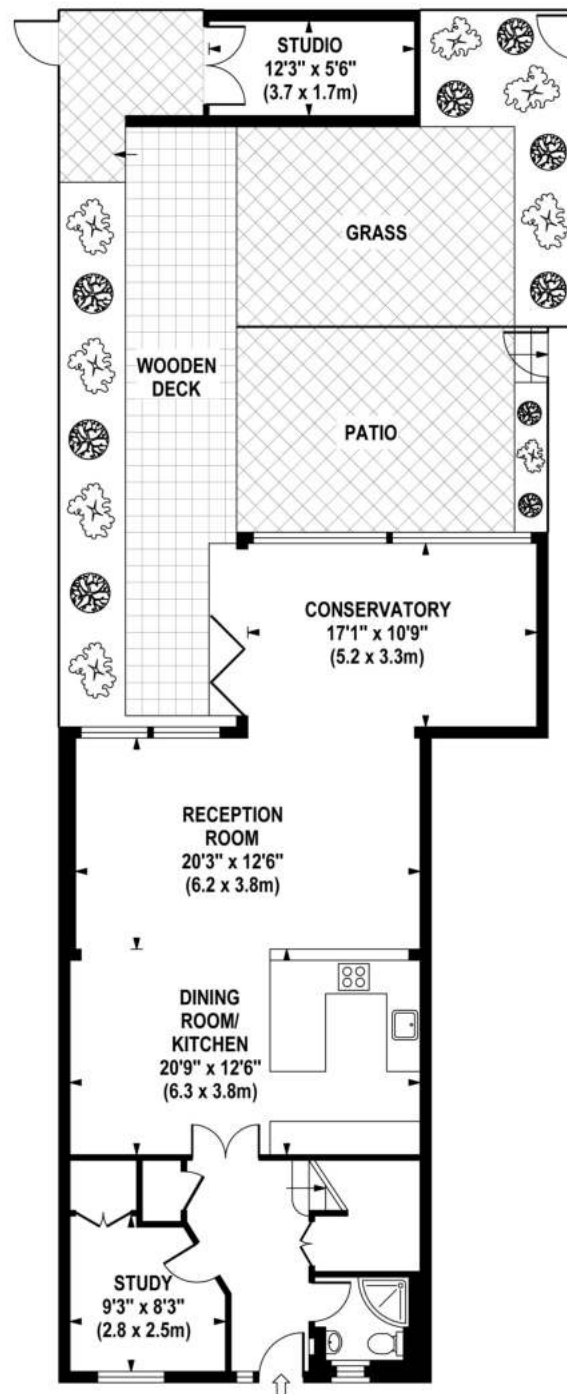




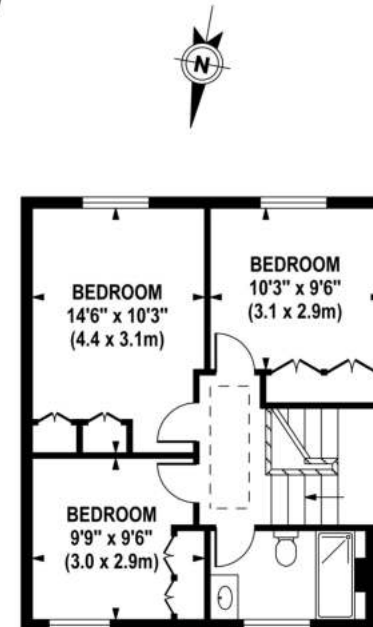
COURT HOUSE

Approximate Gross Internal Area 2024 sq ft / 188.0 sq m
(Including Studio)

Approximate Gross Internal Area 1956 sq ft / 181.7 sq m
(Excluding Studio)



GROUND FLOOR
GROSS INTERNAL
FLOOR AREA 952 SQ FT



SECOND FLOOR
GROSS INTERNAL
FLOOR AREA 502 SQ FT



FIRST FLOOR
GROSS INTERNAL
FLOOR AREA 502 SQ FT

Although every attempt has been made to ensure accuracy, all measurements are approximate.
The floor plan's for illustrative purposes only and not to scale. Measured in accordance to RICS standards.

**COURT CLOSE
ST JOHN'S WOOD PARK
LONDON
NW8**

Bargets Estate Agents